

**The 2015 Mayors' Breakfast is brought to you by the
Edwardsville/Glen Carbon Chamber of Commerce
Government Affairs Committee & IMPACT Strategies, Inc.**



Edwardsville | Glen Carbon
Chamber of Commerce





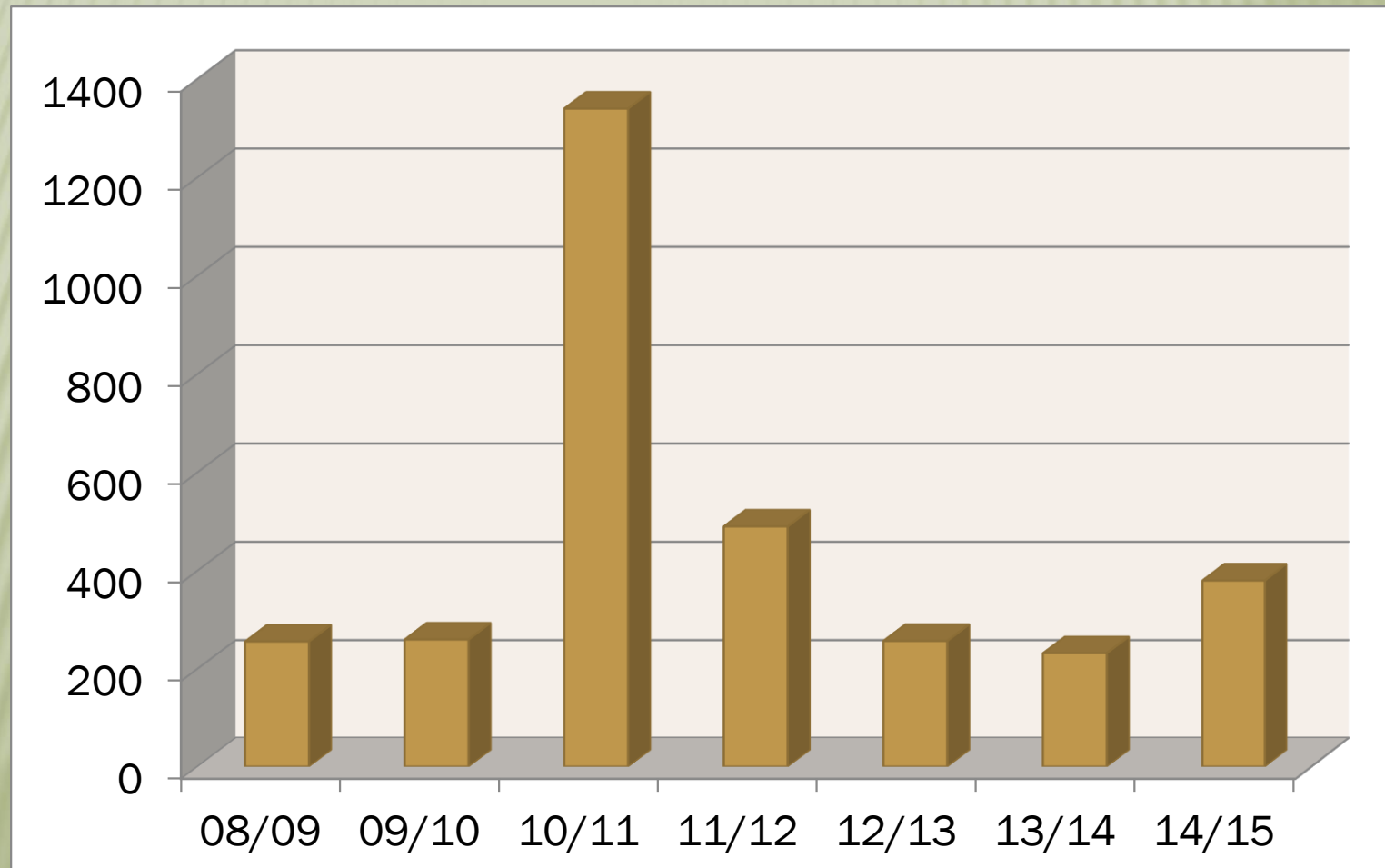
VILLAGE OF GLEN CARBON

APRIL 2015

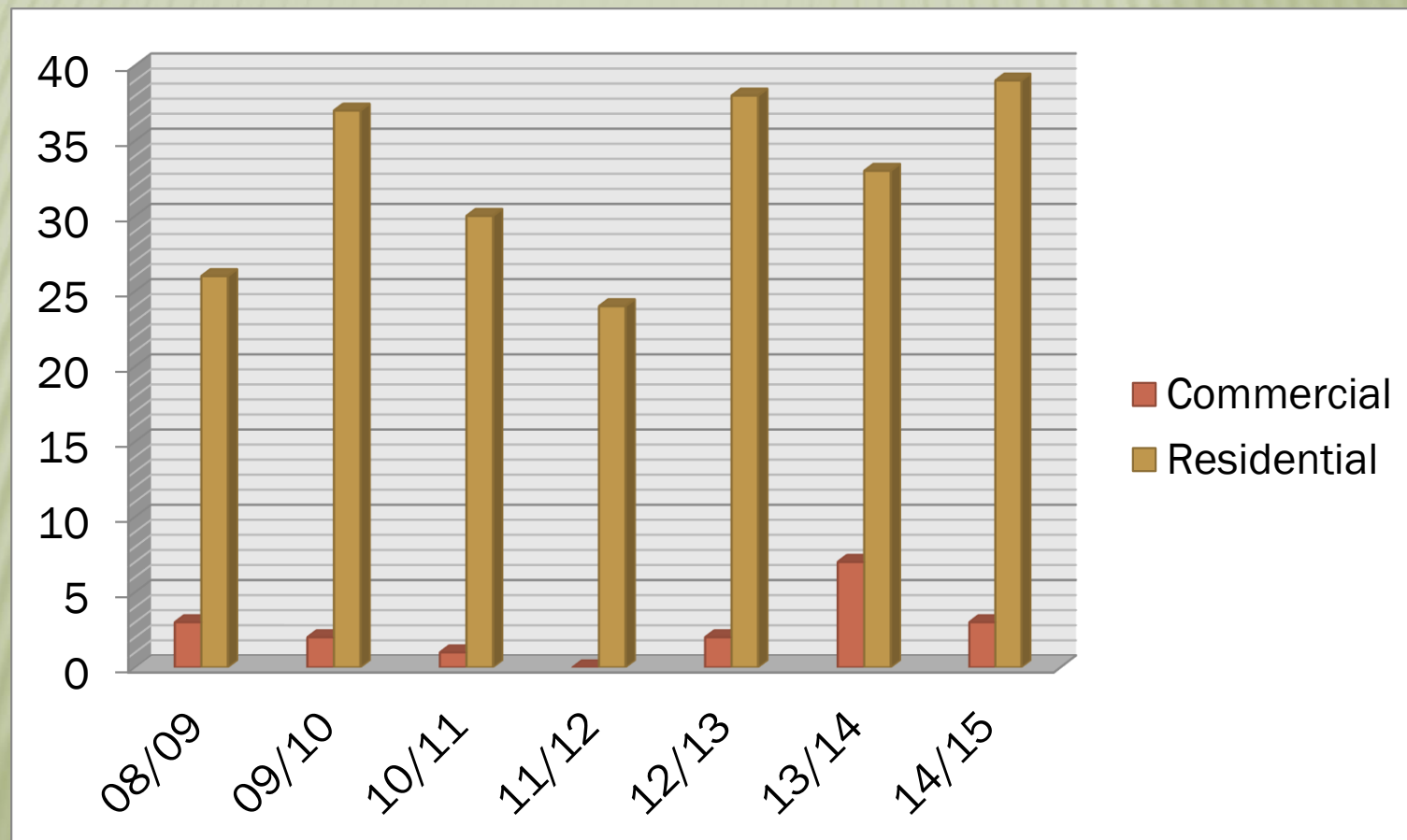




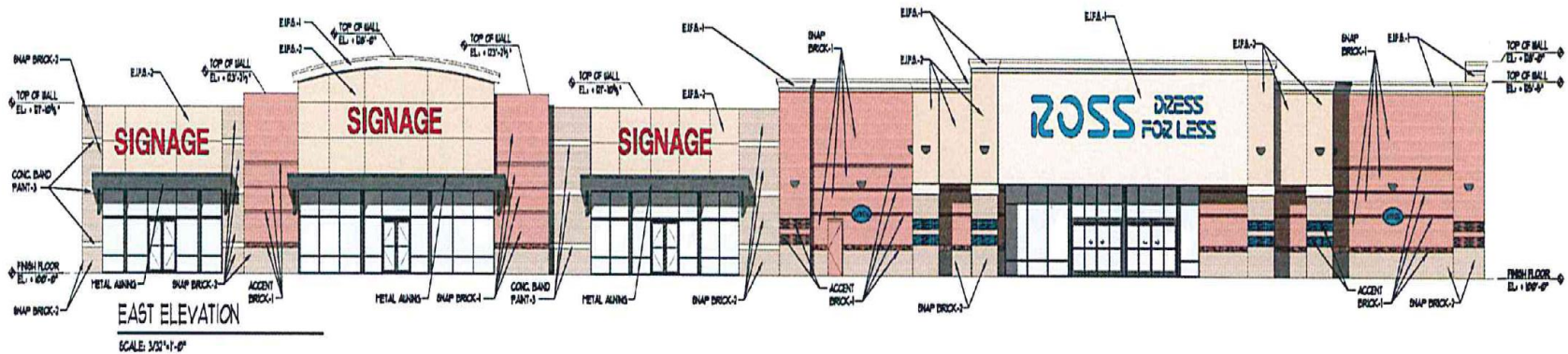
ALL BUILDING PERMITS



BUILDING PERMITS NEW CONSTRUCTION



ROSS DRESS FOR LESS



The site plan illustrates three distinct outparcels, each with its own parking area and landscaping. OUTPARCEL #1 and #2 are situated on the left side of the plan, while OUTPARCEL #3 is on the right. The plan includes detailed landscaping notes such as '6 CHINA HOLLY', '3 DWARF FOUNTAIN GRASS', and '3 SPRING SNOW CRABAPPLE'. A central note for OUTPARCEL #1 refers to 'SEE SHEET LS-3 FOR SIDEWALK LANDSCAPING & PLANT SCHEDULE'. The plan also shows building footprints, parking spaces with dimensions, and various plant symbols. A north arrow is located near the center of the plan.

OUTPARCEL #1

6 CHINA HOLLY
3 DWARF FOUNTAIN GRASS
33 CHINA HOLLY
3 DWARF FOUNTAIN GRASS

SEE SHEET LS-3 FOR SIDEWALK LANDSCAPING & PLANT SCHEDULE

OUTPARCEL #2

2
3
3 CHINA HOLLY
6 DWARF FOUNTAIN GRASS
25 CHINA HOLLY
1 DWARF FOUNTAIN GRASS

SPRING SNOW CRABAPPLE
3 CHINA HOLLY

OUTPARCEL #3

SPRING SNOW CRABAPPLE
SPRING SNOW CRABAPPLE
SPRING SNOW CRABAPPLE

15
13
13
6
9
9
9
6
17
25

er
Land

GATEWAY URGENT CARE



JIMMY JOHN'S



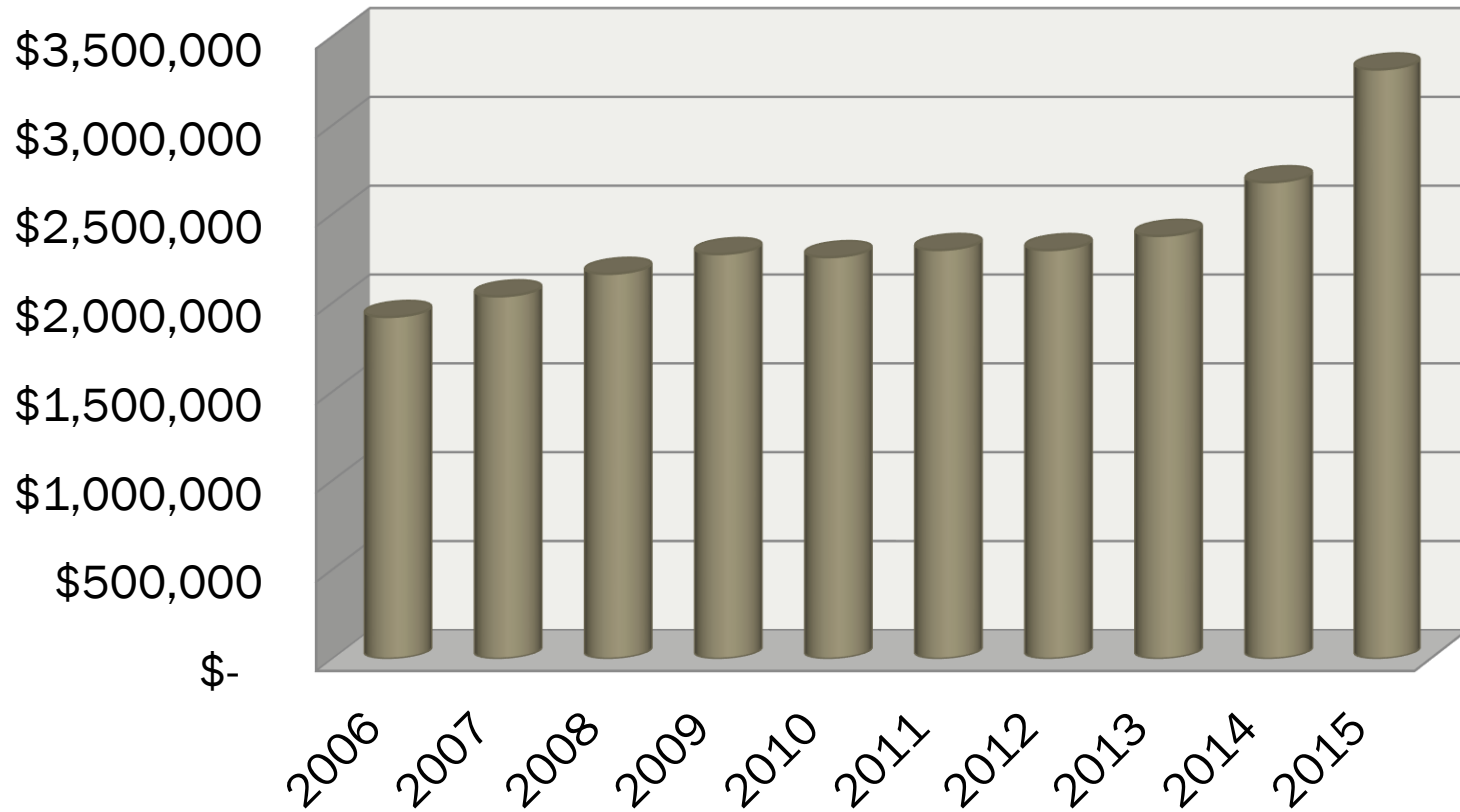
TEXAS ROADHOUSE ADDITION



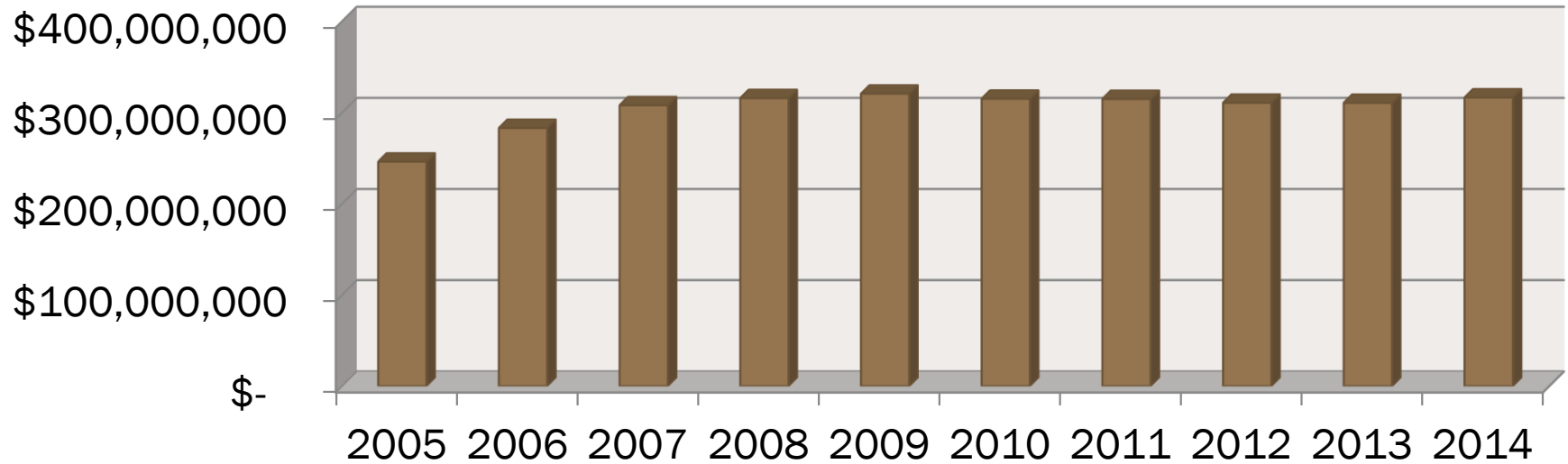
FATHER MCGIVNEY HIGH SCHOOL



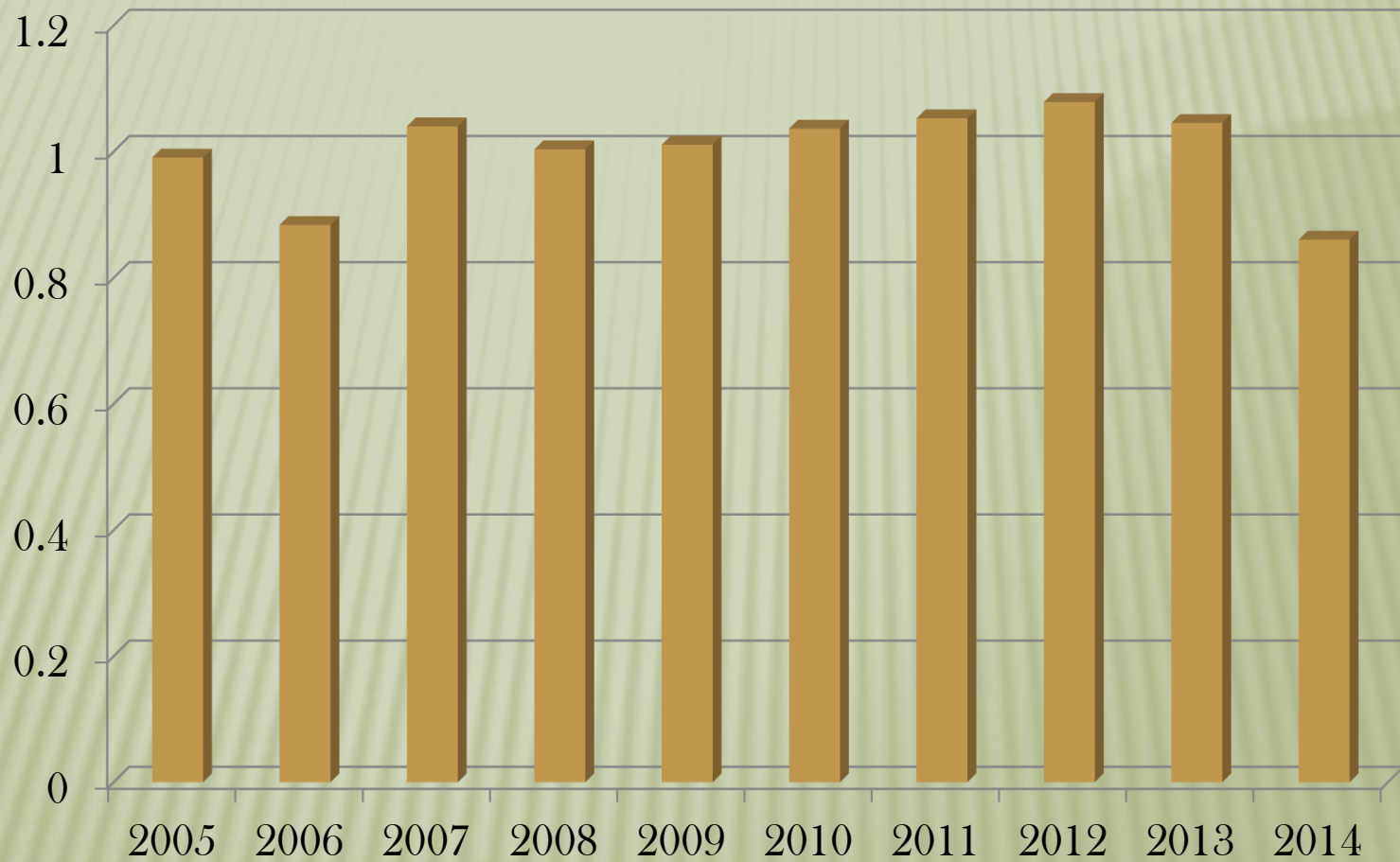
SALES TAX HISTORY



EAV (10 YEAR HISTORY)



10 YEAR TAX RATE HISTORY



VILLAGE OF GLEN CARBON CAPITAL IMPROVEMENT PLAN



2015 - 2020

5 YEAR CAPITAL PLAN

Road Improvement Fund (270)	General Project Fund (310)	Water Capital Fund (515)	General Capital Fund (110)
Design & Construction for Storm water Project	Addition Green Space East Access	Design Water Main Replacement Phase II for Main Street	Shed for Public Works
Sidewalk Replacement included ADA Compliant	Phase II Schon Park	Construction of Water Main Replacement Phase II	New Phone System
Street & Road Maintenance System Plan Implement			New Dispatch Center
Phase III Main Street Resurfacing			
Old Troy Road			

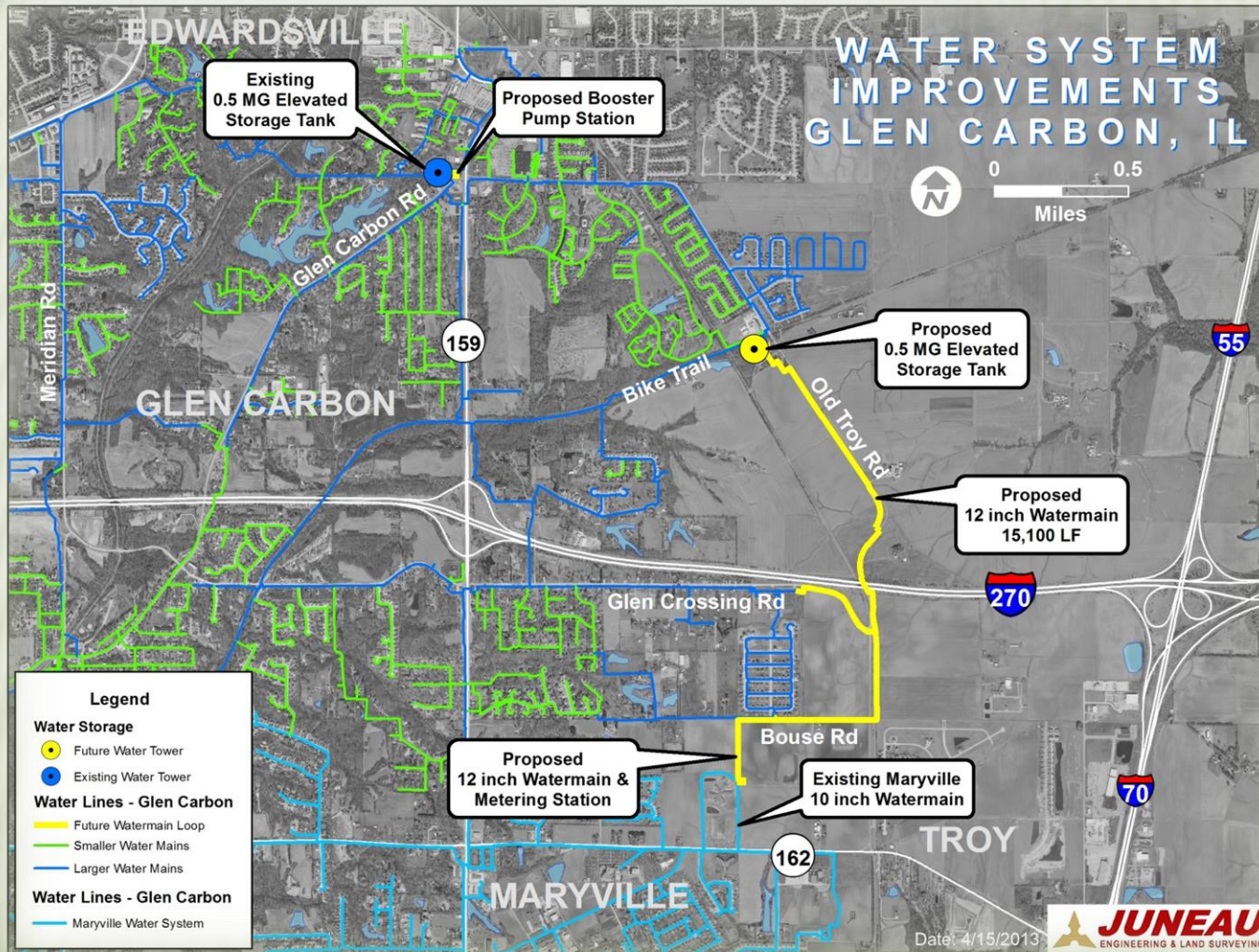
PROPOSED LGDF IMPACT



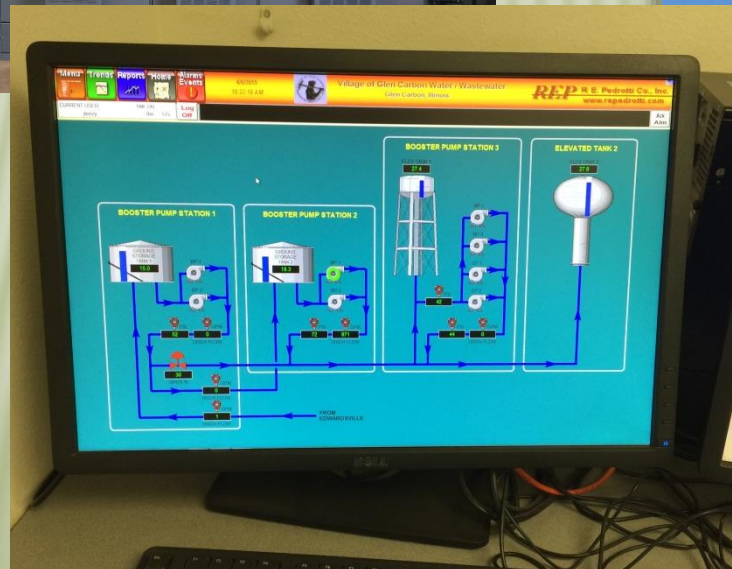
VILLAGE-WIDE STORM WATER PROJECT



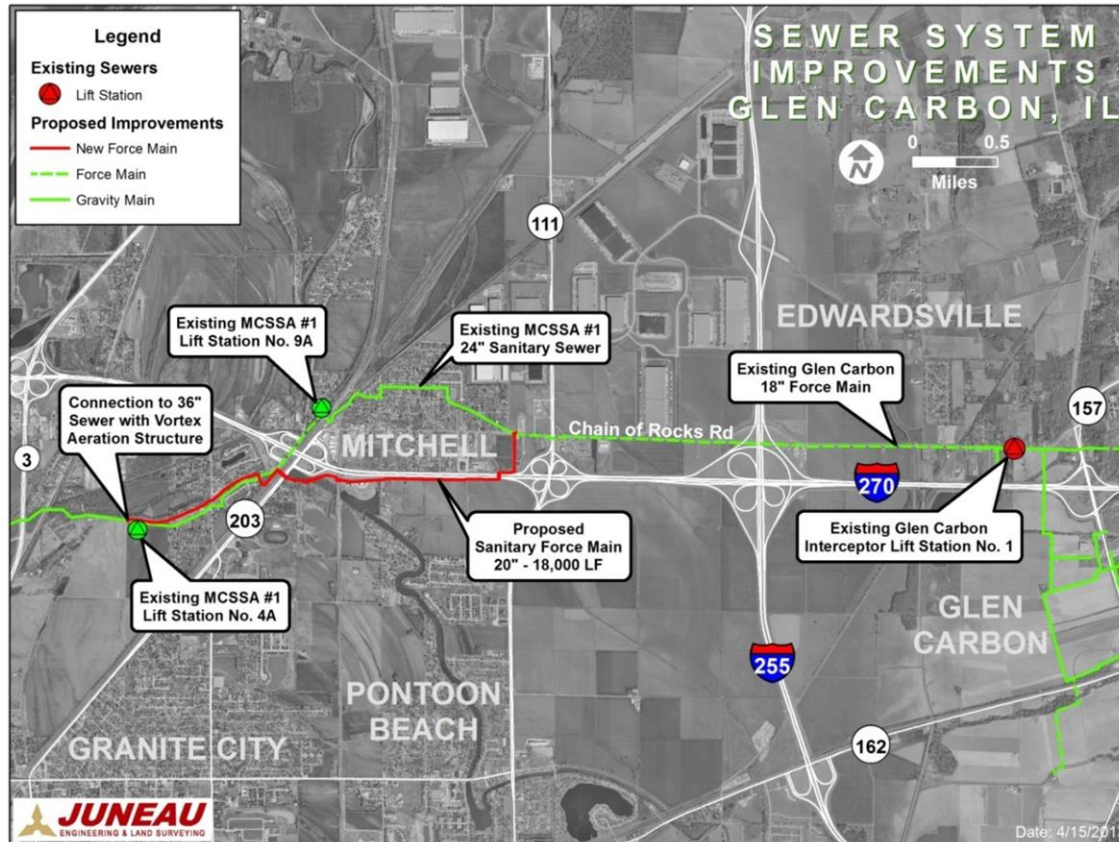
WATER SYSTEM



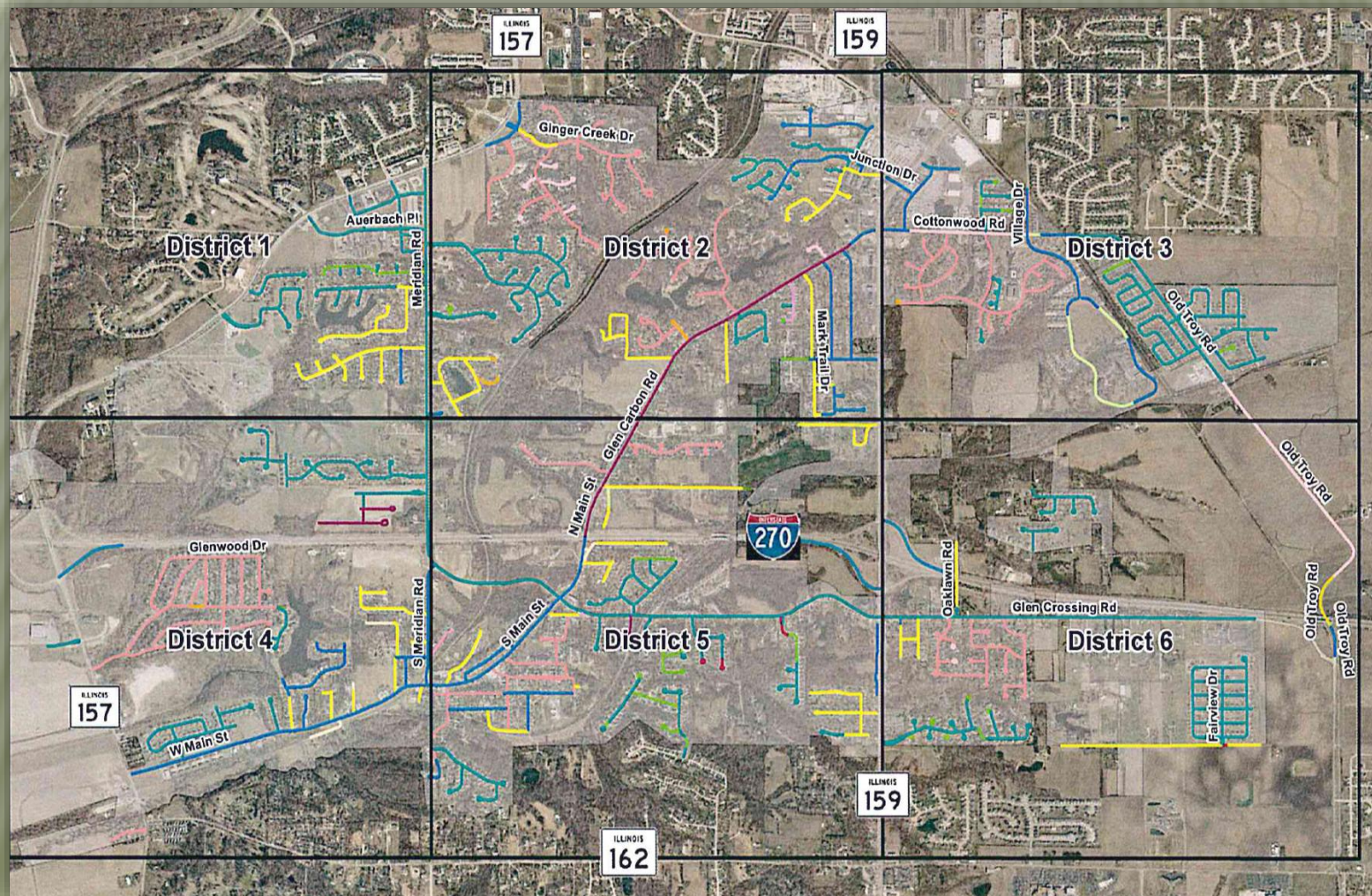
WATER SYSTEM IMPROVEMENT PROJECT



SEWER PROJECT



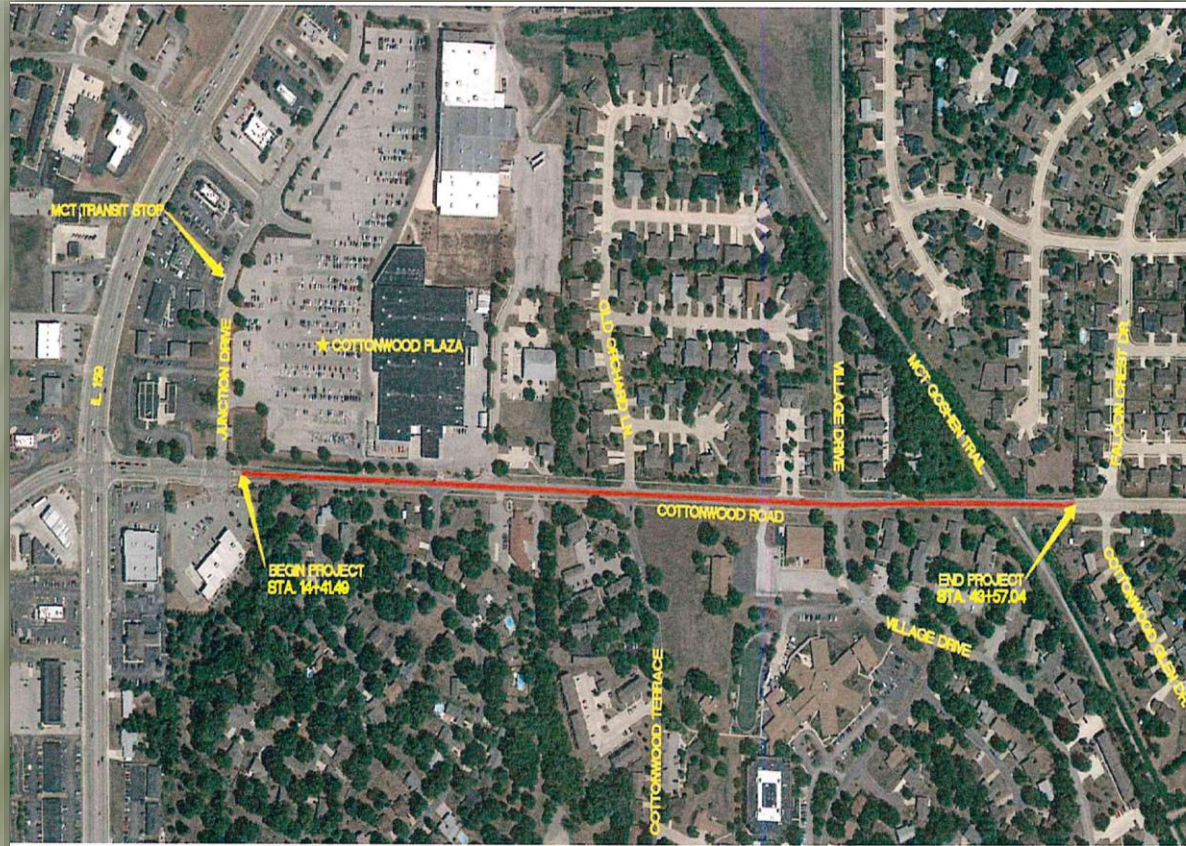
SRMS TRANSPORTATION & ROADWAY MAINTENANCE PLAN



IRON MOUNTAIN LIFT STATION



COTTONWOOD RD REBORN RENEWAL PROJECT



ADA COMPLIANT SIDEWALK

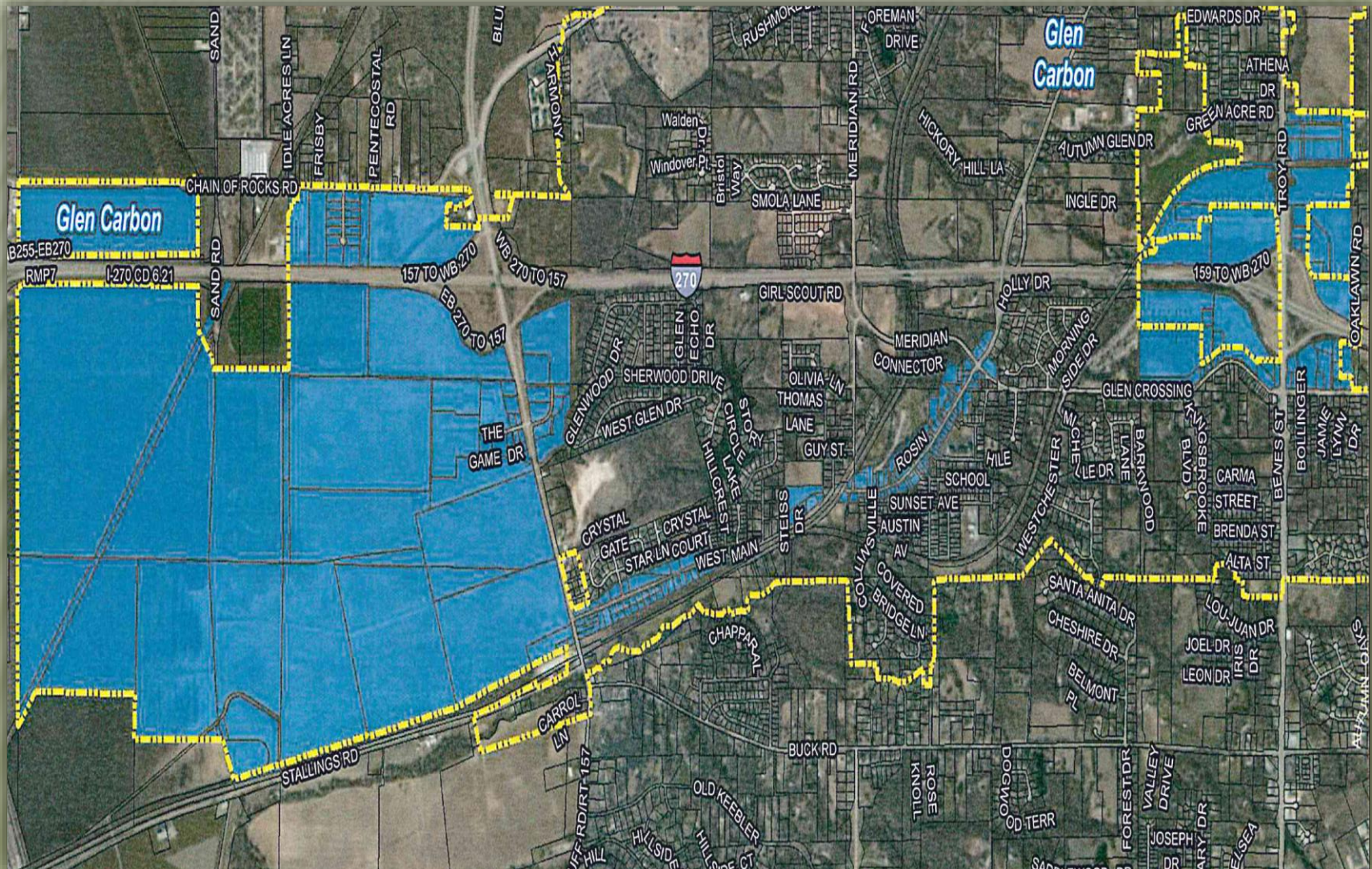


BANNER PROGRAM

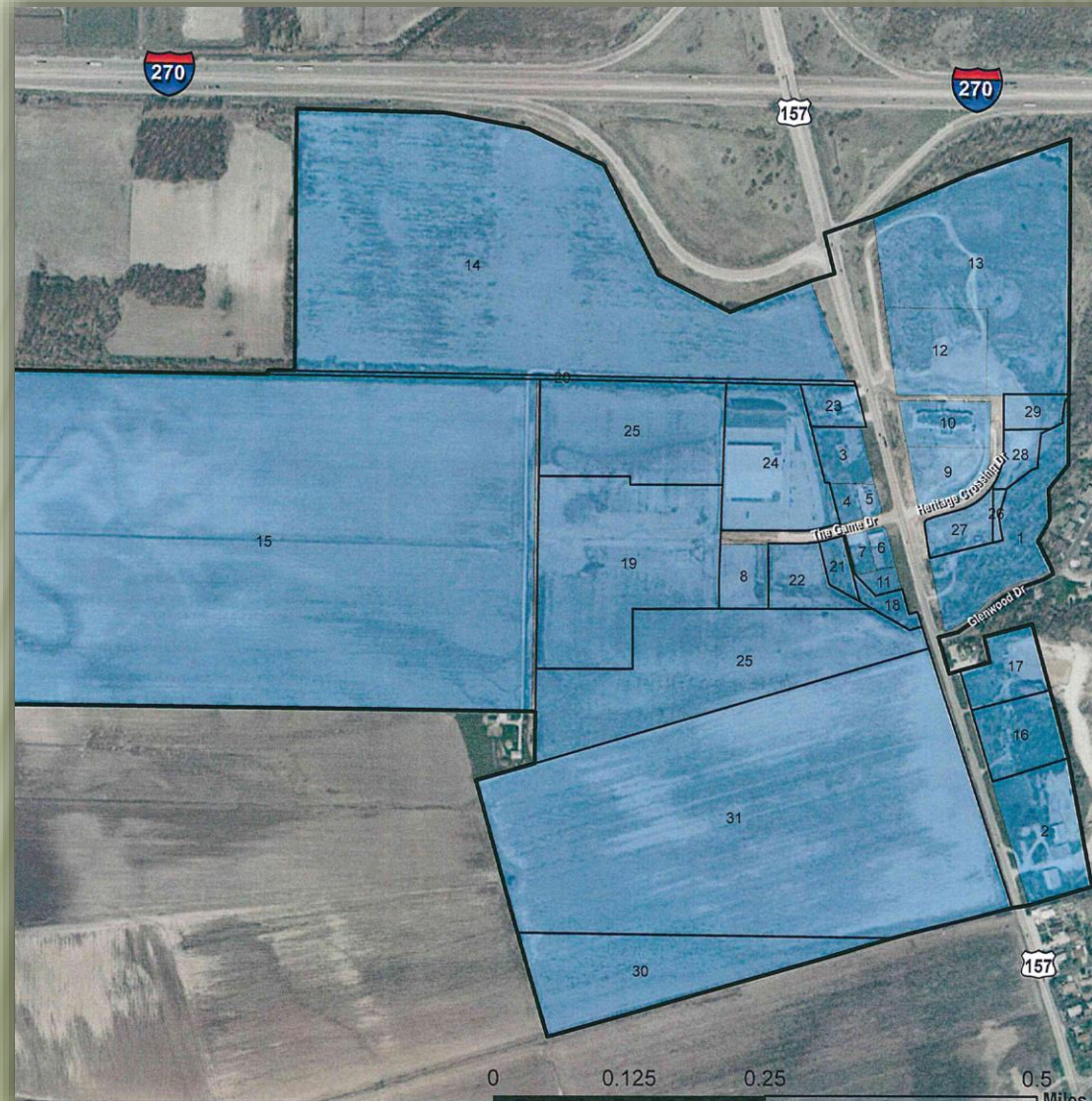


ENTERPRISE DISCOVERY ZONE

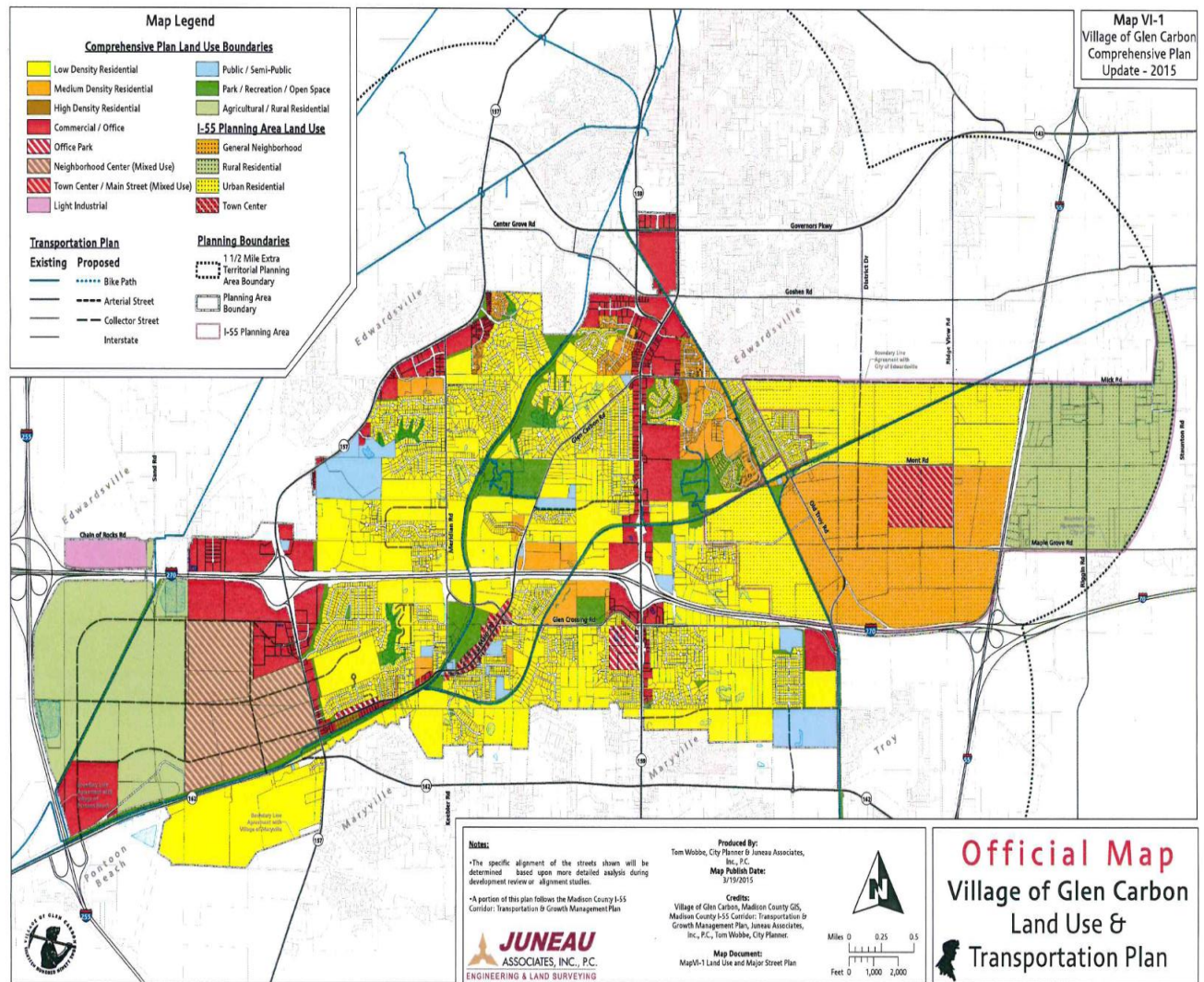




ROUTE 157 BUSINESS DISTRICT MAP



COMPREHENSIVE PLAN MAP



VILLAGE OF GLEN CARBON

April 14, 2015



CITY OF EDWARDSVILLE



Mayor Hal Patton

2015 Chamber of Commerce Breakfast

April 14, 2015

“A hundred times every day I remind myself that my inner and outer life depend on the labors of other men, living and dead, and that I must exert myself in order to give in the same measure as I have received and am still receiving.”

~ *Albert Einstein*

Public Safety Facility



SIUE Fire Station



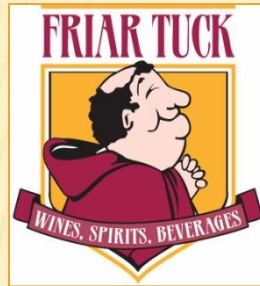
2LKV1 & LKV1 LAKV





Invest in the Future. Invest in Fun!

2014 New Businesses In Edwardsville



Enclave West



Holiday Inn Express



Hot Shots



A promotional graphic for Hotshots Sports Bar And Grill in Edwardsville, IL. The background is a brick building with the 'Hotshots' logo in large, red, stylized letters. Below the logo is a white sign that reads 'Sports Bar And Grill'. A large, red ribbon is being cut by a pair of gold scissors, symbolizing a grand opening. In the top left corner, there is a small map of Illinois with a red dot indicating the location. At the bottom, there is a red banner with white text.

HOTSHOTS EDWARDSVILLE, IL - NOW OPEN!

2511 S. STATE RTE 157

CELEBRATING 25 YEARS

Social Gastropub



Stillwater



Cedarhurst



Recess Brewing



Philosophy Resignation & Phil



Wing Stop



Mattress Firm



Friar Tuck

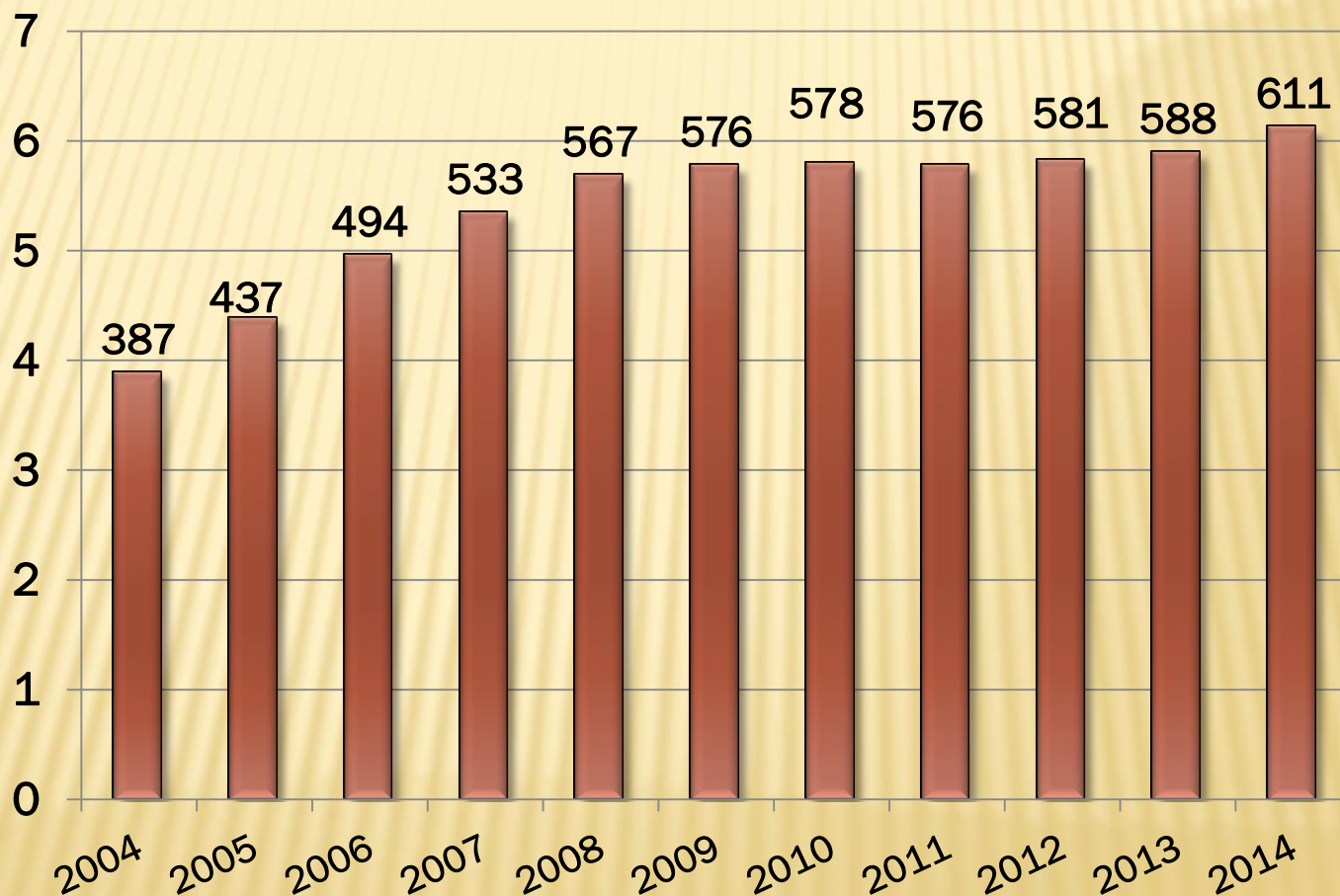


Ark Animal Hospital



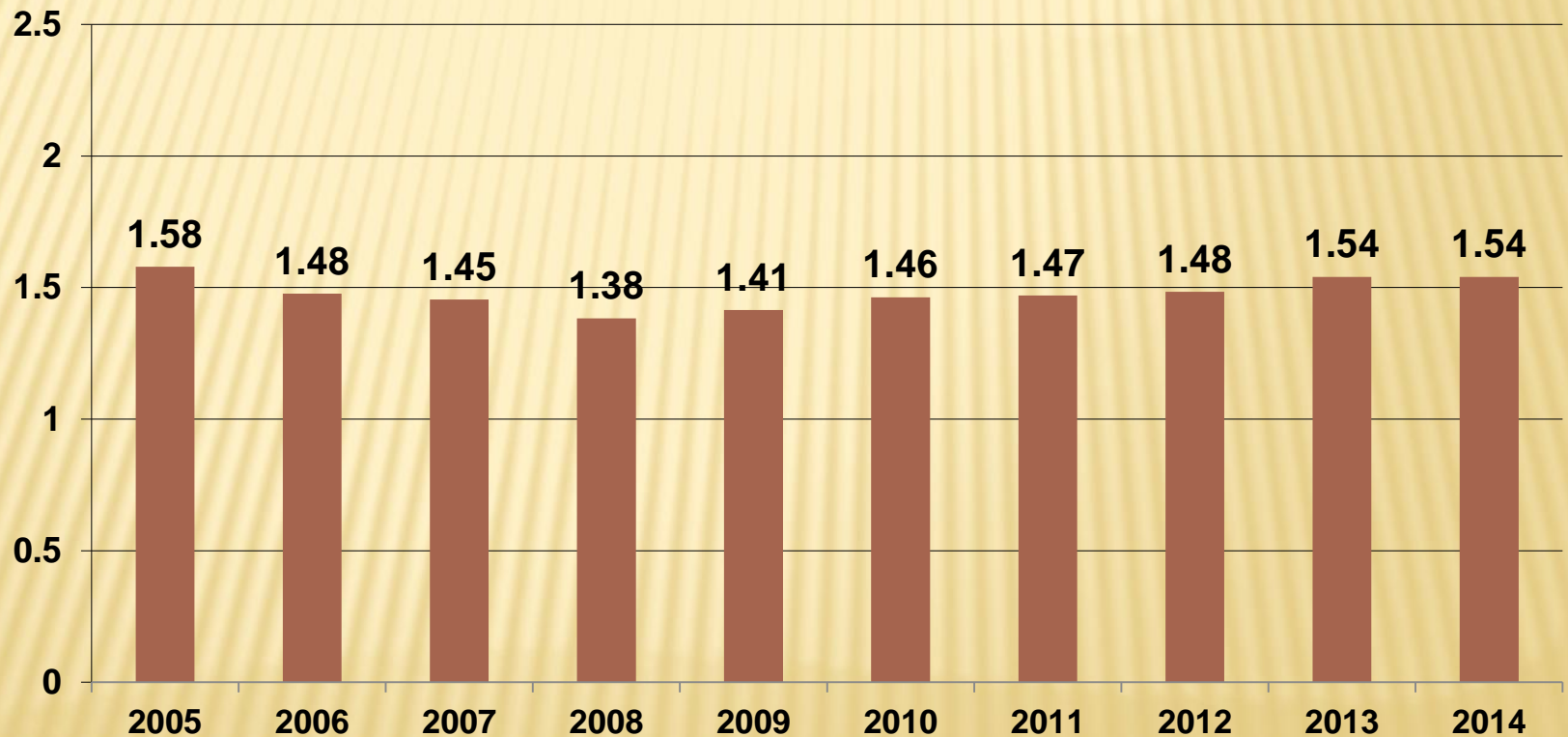
Assessed Valuation History

Millions



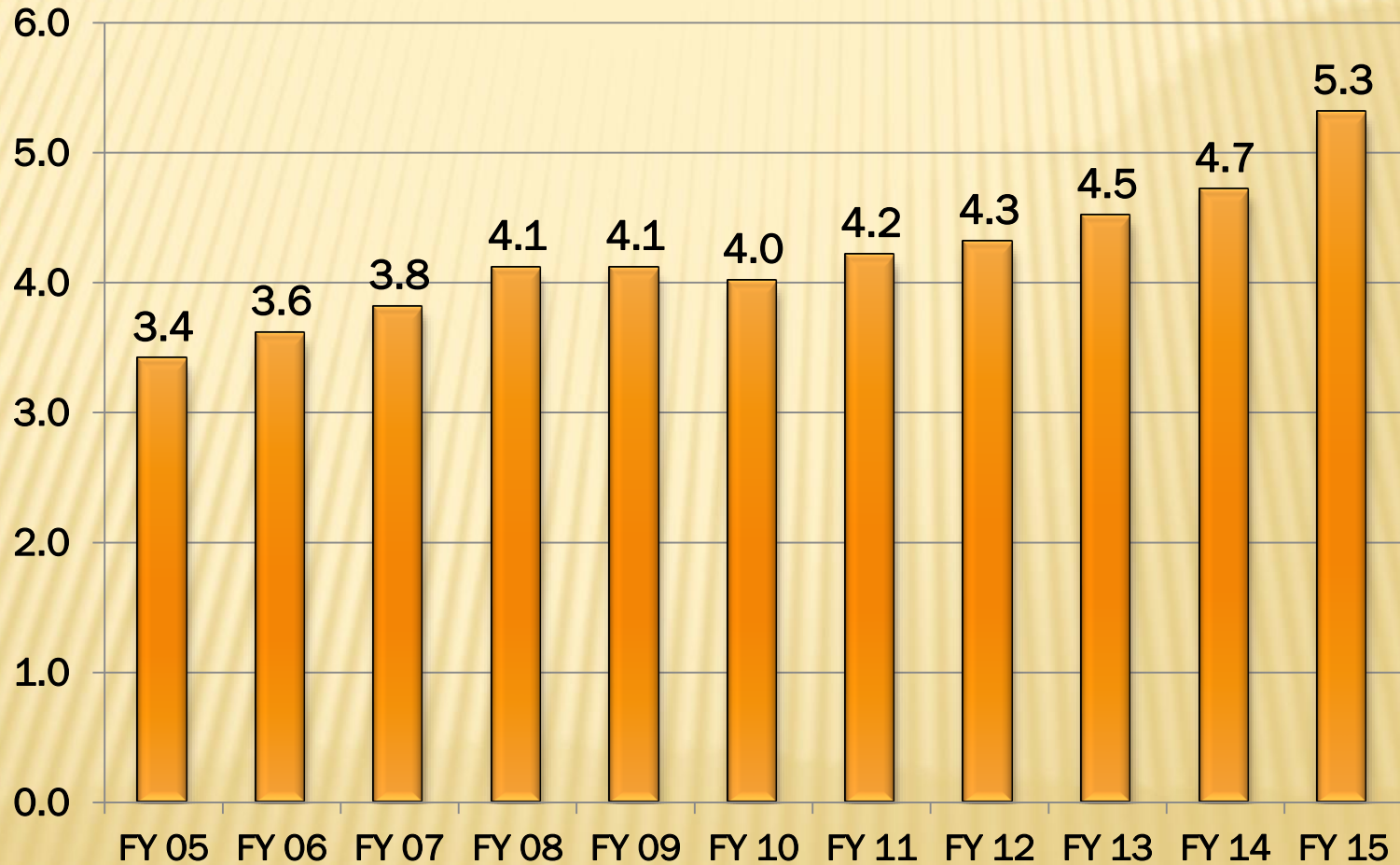
Tax Rate History

Tax Rate per \$100 of Assessed Valuation

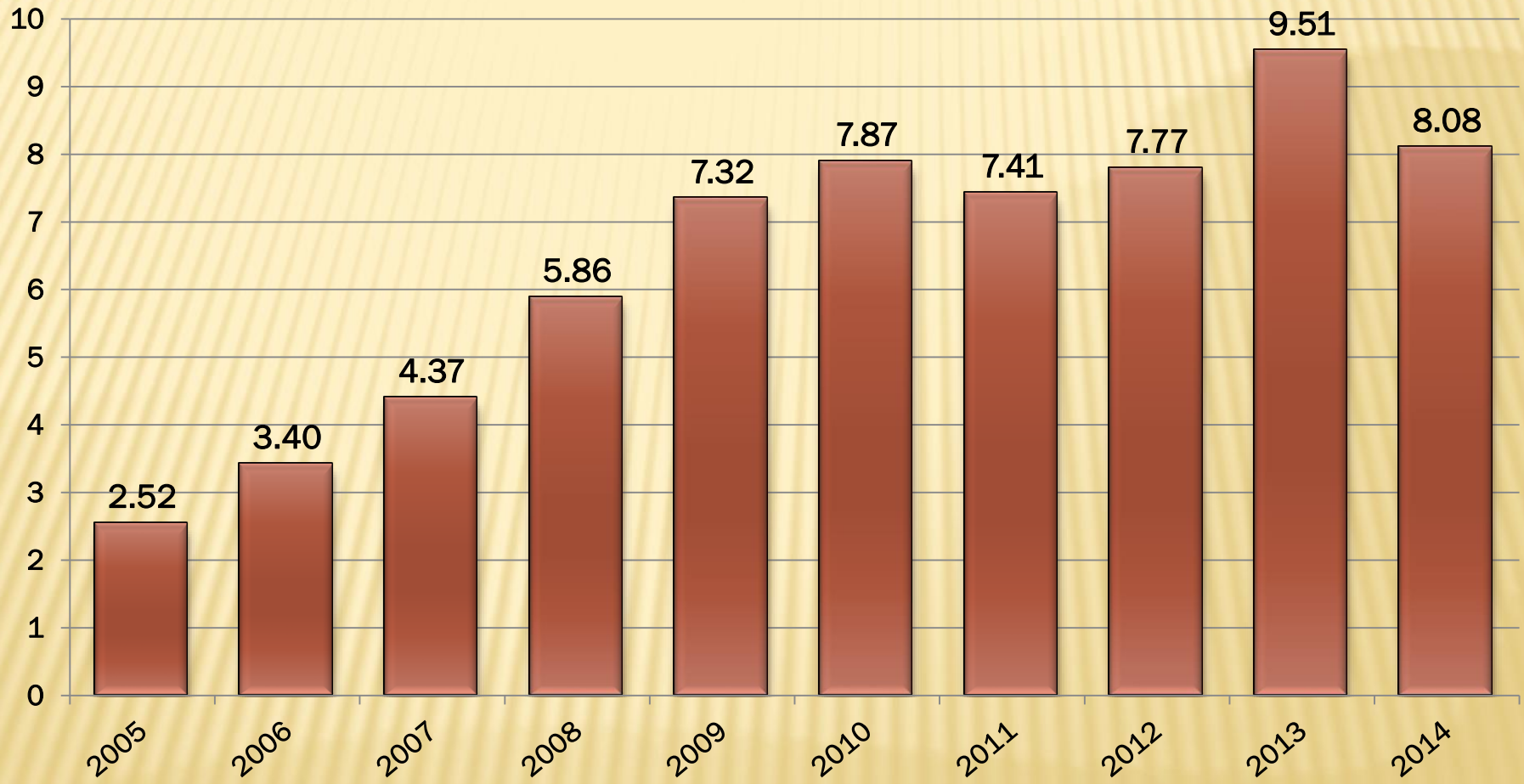


Sales Tax History

Millions



General Fund Balance



2014 - Transferred \$1.6M to other funds

Fund Balances

	City of Edwardsville								
	FYE 4/30/15 (.00 omitted)								
Fund #	Fund/Dept Name	Surplus (Deficit) at 4/30/14	Transfer Resolution 950-5-2014	AJE's	Surplus (Deficit) at 4/30/14	TOTAL REVENUES	YTD 3/31/15 TOTAL EXPENDITURES	NET	Surplus (Deficit) at 3/31/15
101	General Fund:	10,222,673	(1,600,000)	(547,286)	8,075,387	13,597,127	13,048,692	548,435	8,623,822
202	Annexation*	78,334			78,334	19,277		19,277	97,611
205	Capital Improvement	235,376		(1,369)	234,007	1,144,088	1,377,512	(233,424)	583
210	Civil Defense	12,584		100	12,684	6,478	4,886	1,592	14,276
215	Community Redevelopment	(390,225)	389,000	24,632	23,407	494,532	223,199	271,334	294,741
225	Grants	32,077		39,849	71,926	95,051	153,067	(58,016)	13,910
235	Liability Insurance	(168,014)	168,000		(14)	544,356	577,969	(33,613)	(33,627)
240	Motor Fuel Tax	458,233		34,725	492,958	809,660	410,968	398,692	891,650
245	Municipal Band	92,252		(1,475)	90,777	92,869	91,065	1,804	92,581
250	Parks & Playgrounds	(168,771)	174,000	12,557	17,786	691,976	743,985	(52,009)	(34,223)
251	Parks Improvement **	1,046,445		(1,531)	1,044,914	360,780	(13,855)	374,635	1,419,549
252	Wildey operations	(784,995)	785,000	8,426	8,431	544,889	558,007	(13,118)	(4,687)
255	Retirement	(115,252)	47,000		(68,252)	531,514	580,145	(48,631)	(116,883)
256	Social Security	(30,152)	32,000		1,848	468,036	471,474	(3,438)	(1,590)
260	Street & Bridge	25,248		12,389	37,637	596,095	594,623	1,472	39,109
265	Tourism	892	5,000	(2,207)	3,685	44,762	28,158	16,604	20,289
280	TIF #2	1,328,431		(2,010)	1,326,421	745,902	748,933	(3,031)	1,323,390
290	TIF #3	2,222,889		(879,978)	1,342,911	1,613,456	291,743	1,321,713	2,664,624
295	TIF #4	570,419		103,671	674,090	566,558	991,437	(424,879)	249,211
301	Public Safety Facility	0			0	484,156	276,884	207,273	207,273
302	Capital Equipment Acquisitior	0			0	229,167	121,000	108,167	108,167
303	SIUE Public Safety Fund	0			0	311,975		311,975	311,975
400	Bond Reserve Fund	1,026,509		(1,951)	1,024,558	10,243		10,243	1,034,801
410	Incremental Tax Withholding	81,932		(1,029)	80,903	480,833	480,833	(0)	80,903
430	Municipal Facilities ***	(903,499)			(903,499)	(9,475)	100,379	(109,854)	(1,013,353)
510	Public Library	560,717		(8,263)	552,454	1,296,476	1,181,999	114,477	666,931
610	Garbage	(89,560)		(13,874)	(103,434)	1,713,389	1,506,948	206,442	103,008
6xx	Consolidated Water Fund	9,228,390		1,931,755	11,160,145	3,978,447	4,794,198	(815,751)	10,344,394
6xx	Consolidated Sewer Fund	13,497,310		(3,712)	13,493,598	3,698,920	3,425,844	273,076	13,766,674
710	Police Dept Endowment	74,358			74,358	744		744	75,102
720	Mobile Intensive Care	267,341		(1,299)	266,042	3,092		3,092	269,134
810	Group Health Insurance	530,600		11,458	542,058	2,023,136	2,006,449	16,687	558,745
952	St. Louis Special Service Are:	663			663	34,445	35,048	(603)	60
		38,943,205	0	713,578	39,656,783	37,222,954	34,811,589	2,411,365	42,068,148
	* Expenditures for infrastructure, capital structure, & vehicles								
	** see Resolution 62-3-2001								
	*** Expenditures of \$109,504.68 annually for 200 E. Park St. debt obligations with Bank of America; matures 9/1/22.								

May Building



May Building



The Edge



Mar 25, 2015
CardinalAviationServices.Com

The Edge



Park Street Plaza



Park Street Plaza



Lincoln School



Mannie Jackson Center for the Humanities



West Union Street Before and After



Grand Avenue Before and After



Proposed New Housing Subdivisions

- 3 New Housing Subdivisions
- 103.56 acres being developed
- 164 single family homes
- 64 multi family units
- 150 apartment units
- Absorption rate 2.95 years



Dollar Values of Construction

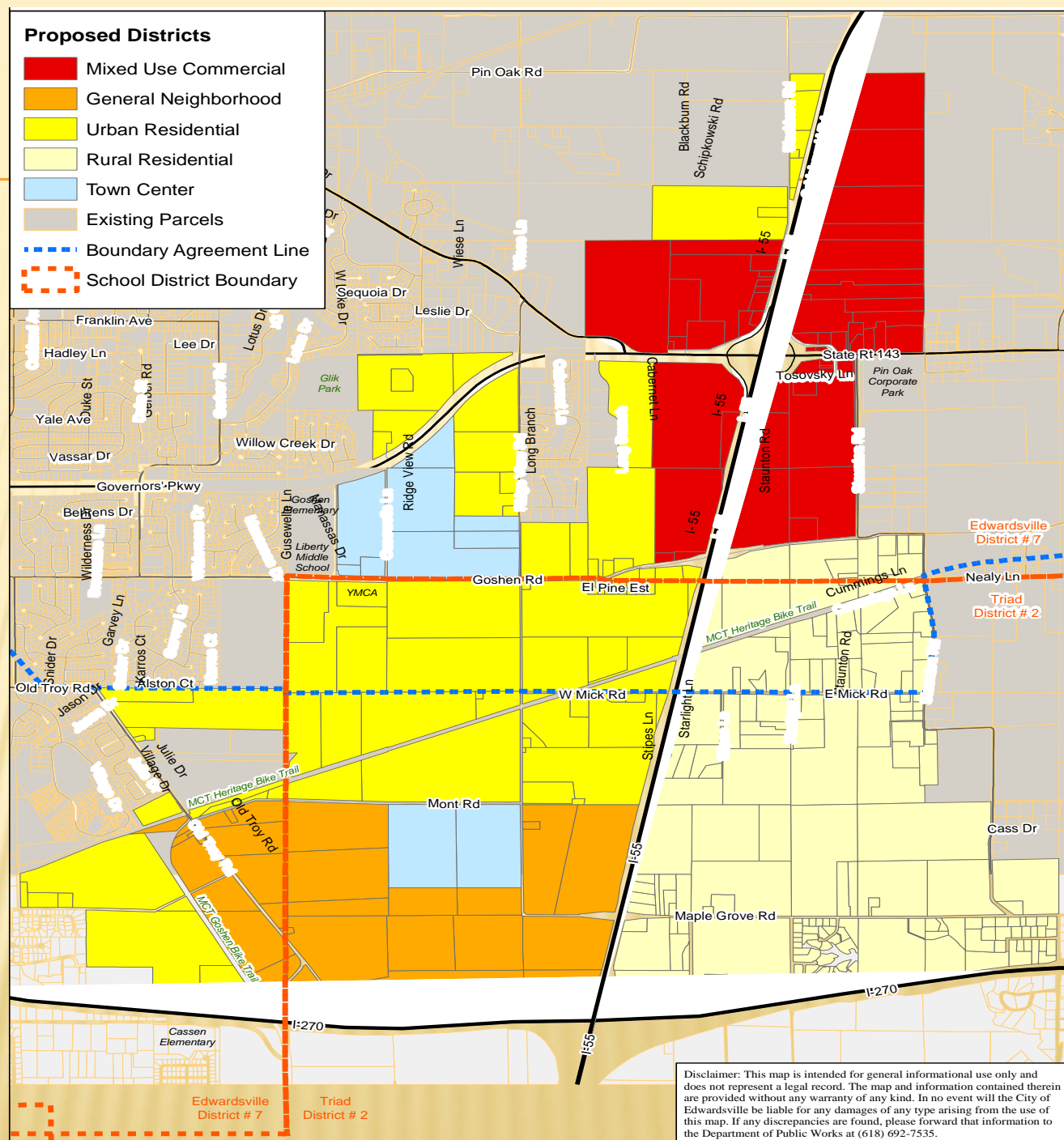
Millions



I-55 Corridor

Proposed Districts

- Mixed Use Commercial
- General Neighborhood
- Urban Residential
- Rural Residential
- Town Center
- Existing Parcels
- Boundary Agreement Line
- School District Boundary



Disclaimer: This map is intended for general informational use only and does not represent a legal record. The map and information contained therein are provided without any warranty of any kind. In no event will the City of Edwardsville be liable for any damages of any type arising from the use of this map. If any discrepancies are found, please forward that information to the Department of Public Works at (618) 692-7535.

Parks & Recreation Department

Community & Family Programs Participation April 1, 2014 – March 31, 2015

Senior Trips - 885	Flying 4 Kids Kite Fly – 86
IDNR Free Fishing Lessons – 56	Fishing Derby – 54
Movies in the Park – 1,350	Yoga in the Park - 387
Halloween Costume Contest – 199	Elves Workshop – 61
Holiday Art – 19	Winter Market – 24 vendors
Santa House – 784	Daddy Daughter Valentine Dance – 197
Mother Son Fun Night – 84	Pinterest Parties – 264
Family Campout – 41	Frozen Party - 45
Route 66 – 10,000 (approximate participants enjoying the festival)	

Parks & Recreation Department

Sports Leagues & Tournaments Participation April 30, 2014 - March 31, 2015

Kindergarten /1st	78	2nd	62
3rd	53	4th	43
5/6th	69	7th-12th	55
Co-Ed A Slow pitch	120	Co-Ed B Slow pitch	139
Men's A Slow pitch	140	Men's B Slow pitch	152
Men's Fast pitch	71	Fall Co-Ed Slow pitch	94
Fall Men's Slow pitch	70	Men's Fast pitch McGauley tournament	67

Special Parks

Watershed
Nature Center



Children's
Museum



Stephenson
House

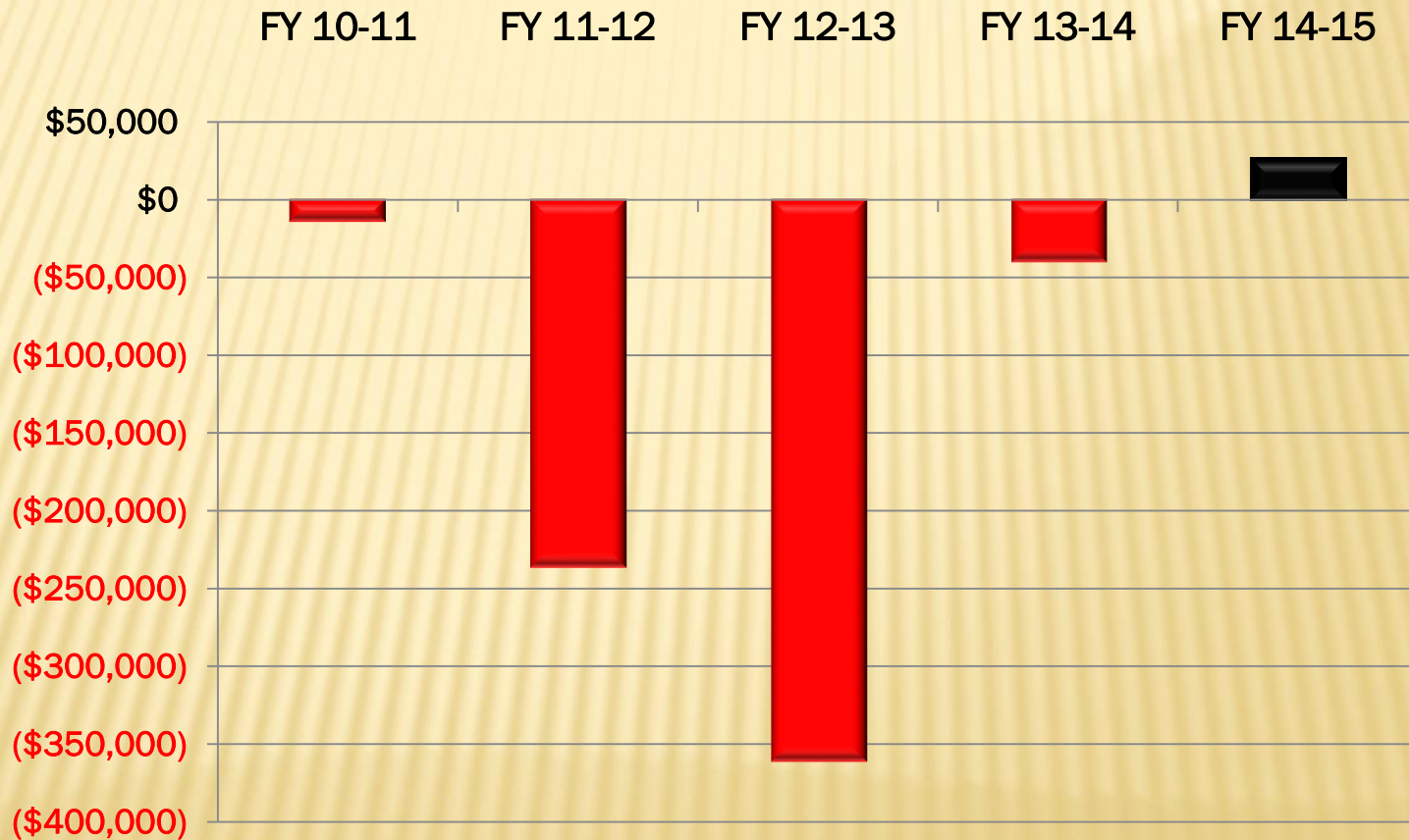


Wildey Theatre



Wildey Theatre (Net)

March 2011 - March 2015



Be a yardstick of quality. Some people aren't used to an environment where excellence is expected.

~ *Steve Jobs*

**The 2015 Mayors' Breakfast is brought to you by the
Edwardsville/Glen Carbon Chamber of Commerce
Government Affairs Committee & IMPACT Strategies, Inc.**



Edwardsville | Glen Carbon
Chamber of Commerce

