

TEXT YOUR QUESTION TO 618-267-6991

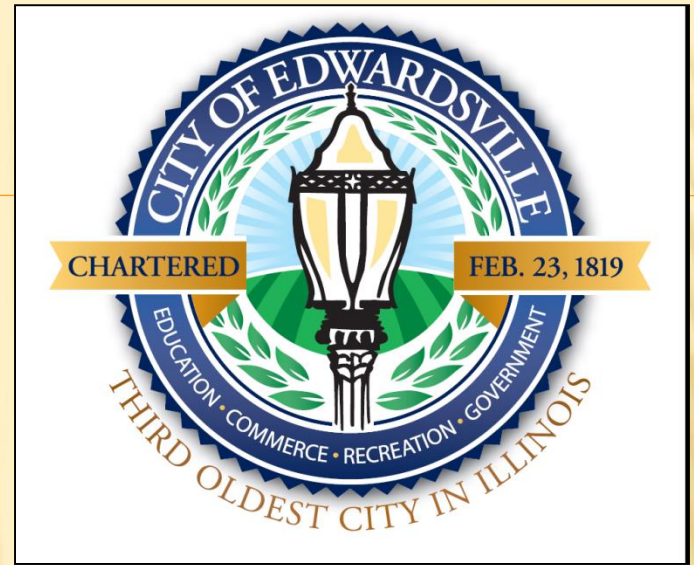
**The 2016 Mayors' Legislative Breakfast is brought to you by
the Edwardsville/Glen Carbon Chamber of Commerce
Government Affairs Committee & IMPACT Strategies, Inc.**



Edwardsville | Glen Carbon
Chamber of Commerce



City of Edwardsville



Mayor Hal Patton

**Chamber of Commerce Legislative Breakfast
April 7, 2016**

"It's hard to imagine that you're going to have businesses with high standards in a city that has low standards."

~ Mick Cornett, Mayor of Oklahoma City

Public Safety Facility



SIUE Fire Sub-Station



SIUE Fire Sub-Station





Invest in the Future. Invest in Fun!



City of
Edwardsville

Spray & Play Park

Spray & Play Park's Main Features:

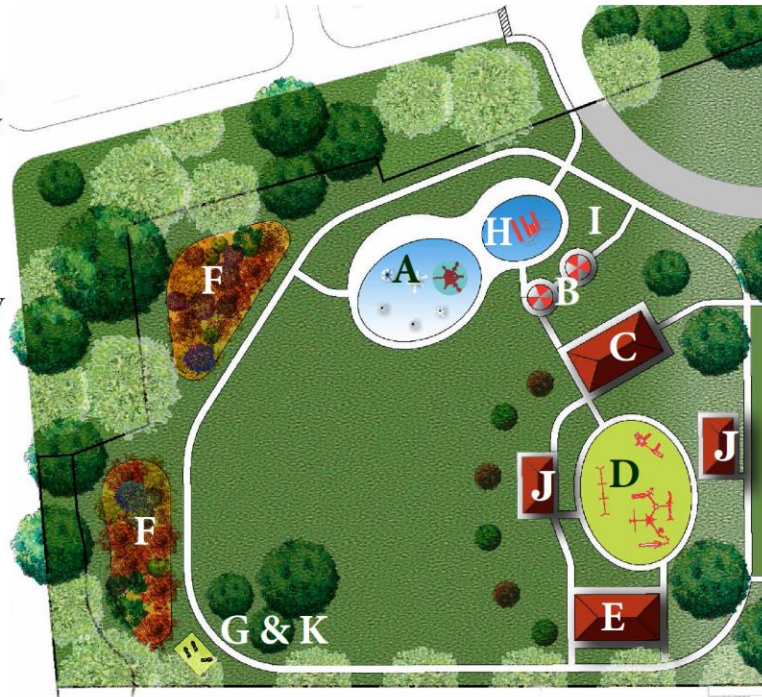
- Centrally located 3 acre Park
- Fully Accessible Spray Ground
- Accessible Playground
- Picnic & Shade Shelters
- Restrooms & Concession Facilities
- Walking & Fitness Loop Trail
- All Features & Surfaces to be Accessible
- Shared Parking w/ Public Safety Facility

Phase 1 Development

- [A] Aquatic Playground
- [B] Shade Structures
- [C] 60'x40' Restroom/Changing Facility
- [D] Playground with Active Play
- [E] 60'x40' Picnic Structure
- [F] Wet Basins w/ Native Plantings
- [G] 0.3 mile Fitness Trail w/ Stations
- Solar Light Fixtures

Phase 2 Development

- [H] Aquatic Slide Park w/Shallow Pool
- [I] Additional Shade Structures
- [J] Additional Picnic Structures
- [K] Additional Fitness Stations

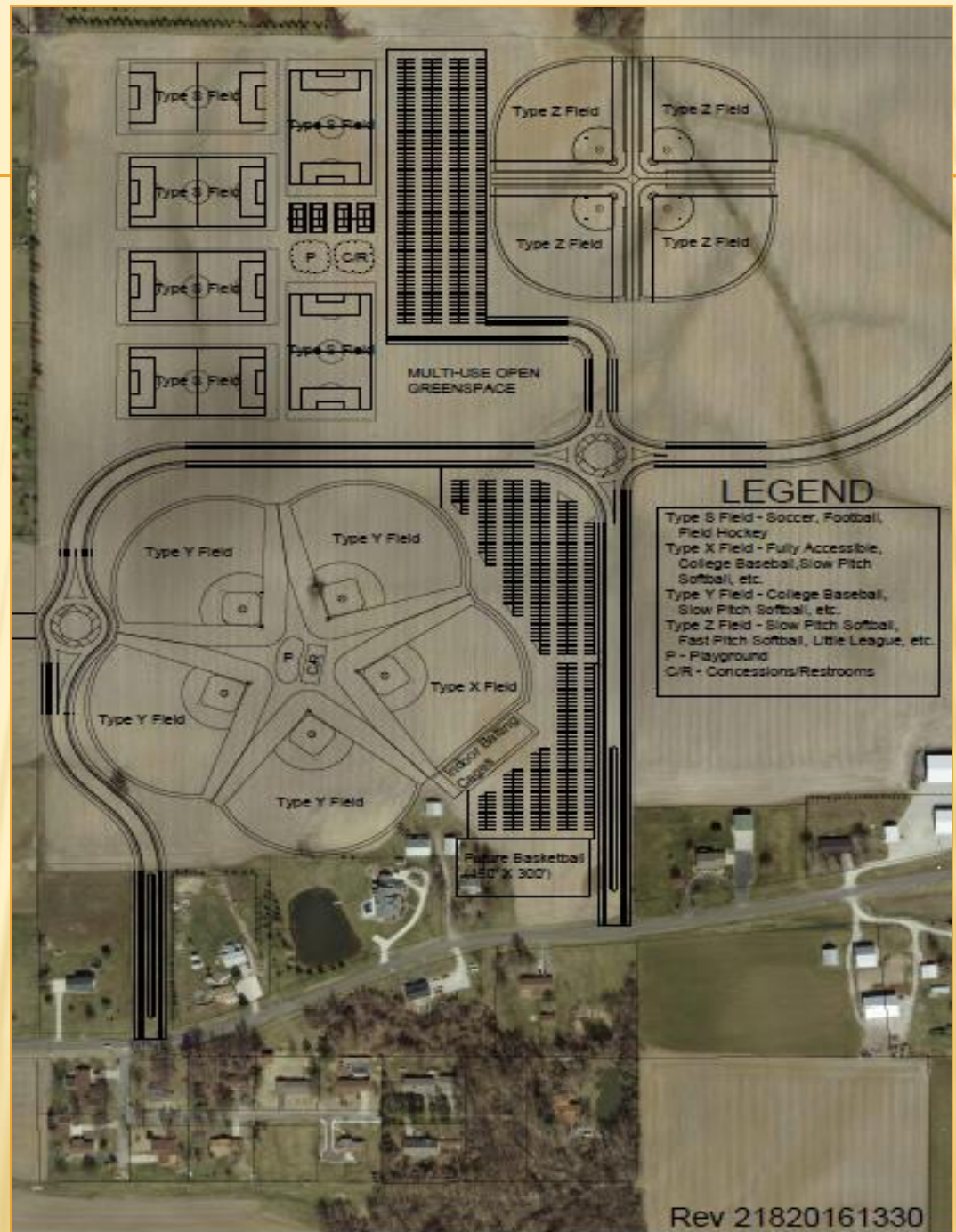


Splash Pad



Plummer Family Park

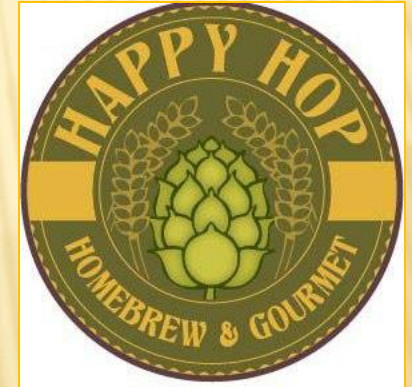
Baseball, softball,
soccer, field
hockey,
basketball, pickle
ball, and
potentially more.



SIUE Swimming Pool



2015 New Businesses In Edwardsville



Circa



Happy Hop



Gingham Buffalo



Signarama



Taj Indian Cuisine



Planet Fitness



Source Juicery



Taqueria



Gain Fuel Center



May Building



Arby's "Reboot"



The Bedroom Store



Redmon Insurance Agency



Whisker Bones Supply



Run Well



Buffalo Wild Wings



Enclave Management

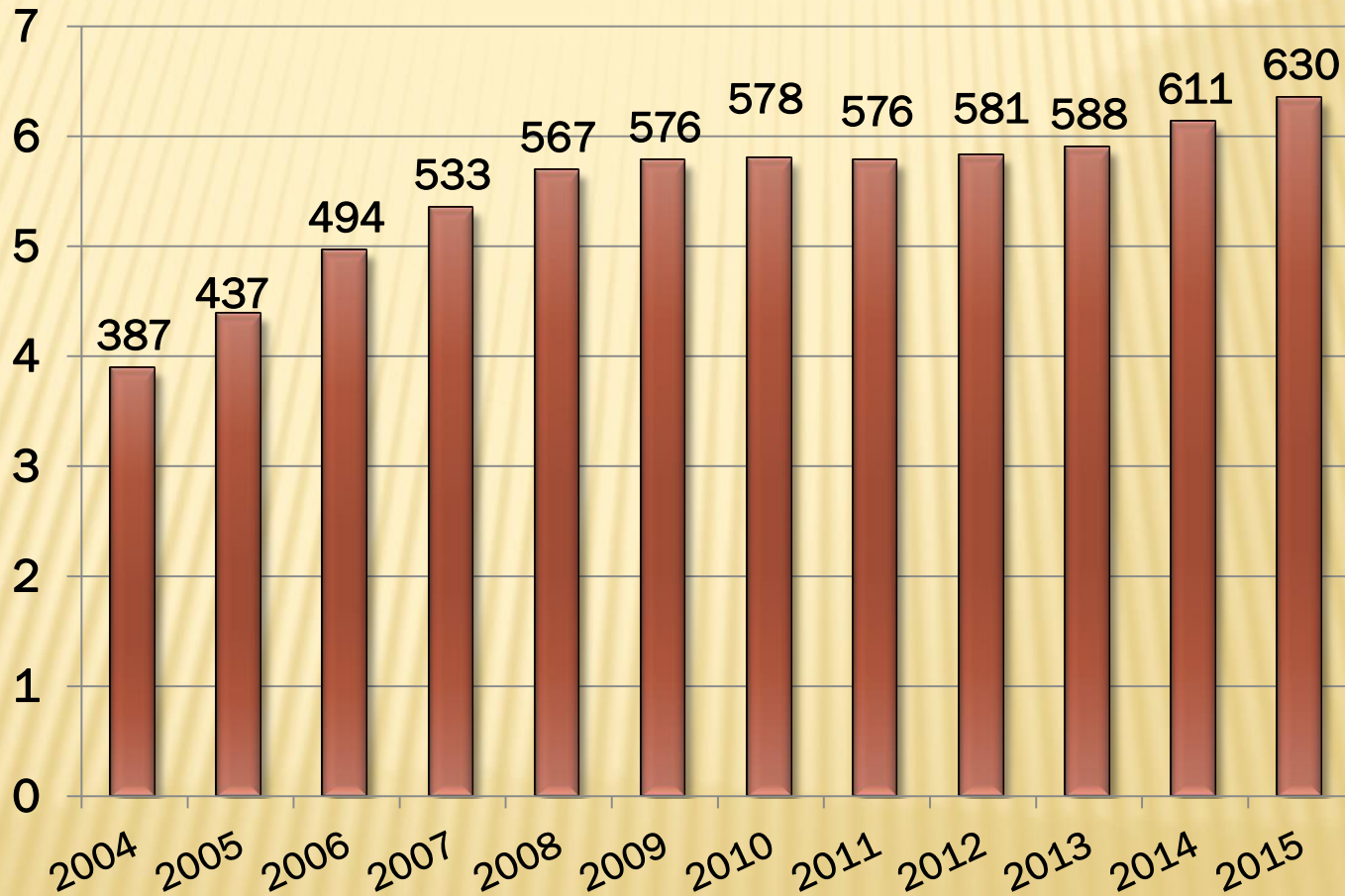


The Edge Student Apartments



Assessed Valuation History

Millions



* 2015 Estimated

Tax Rate History

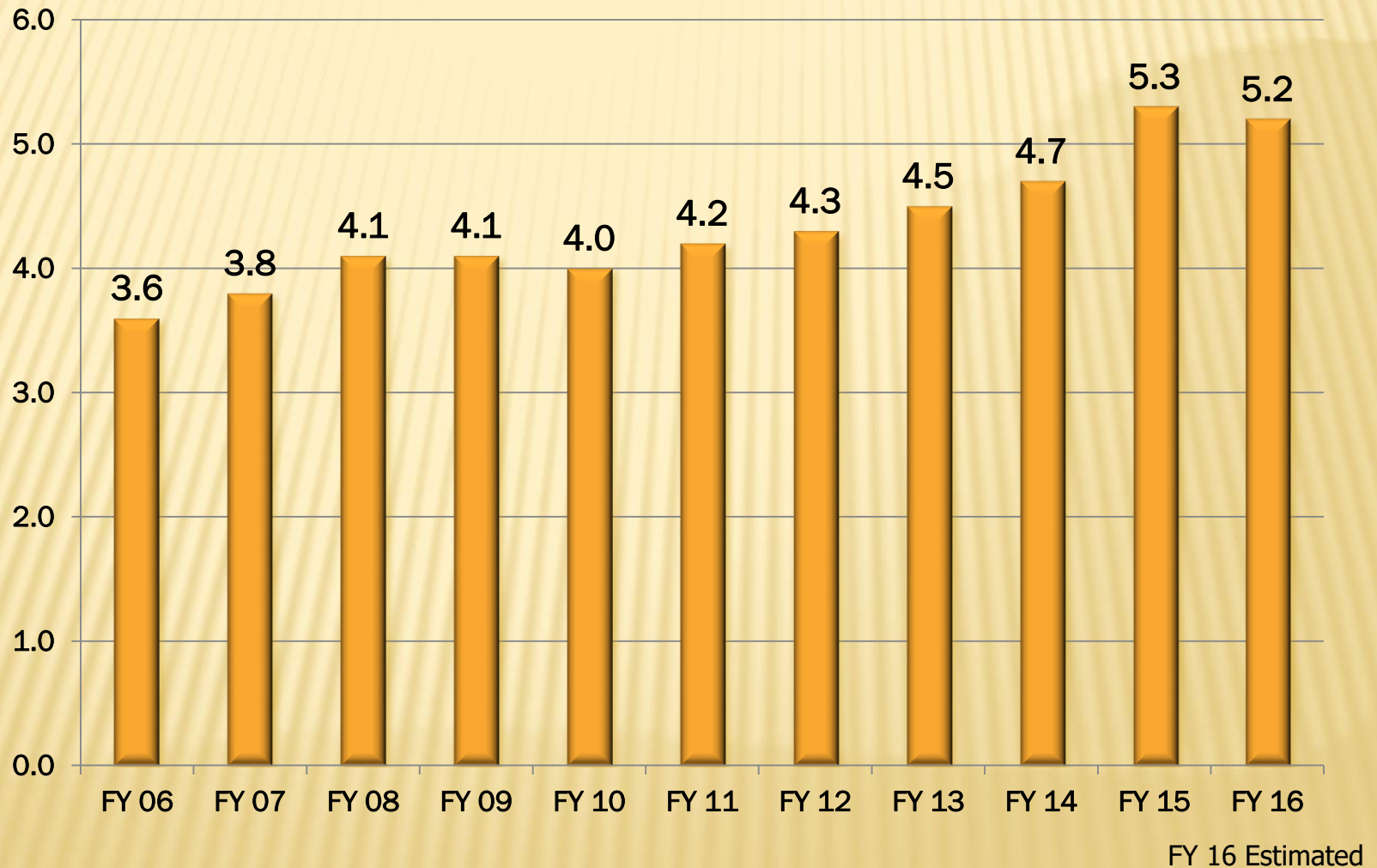
Tax Rate per \$100 of Assessed Valuation



* 2015 Estimated

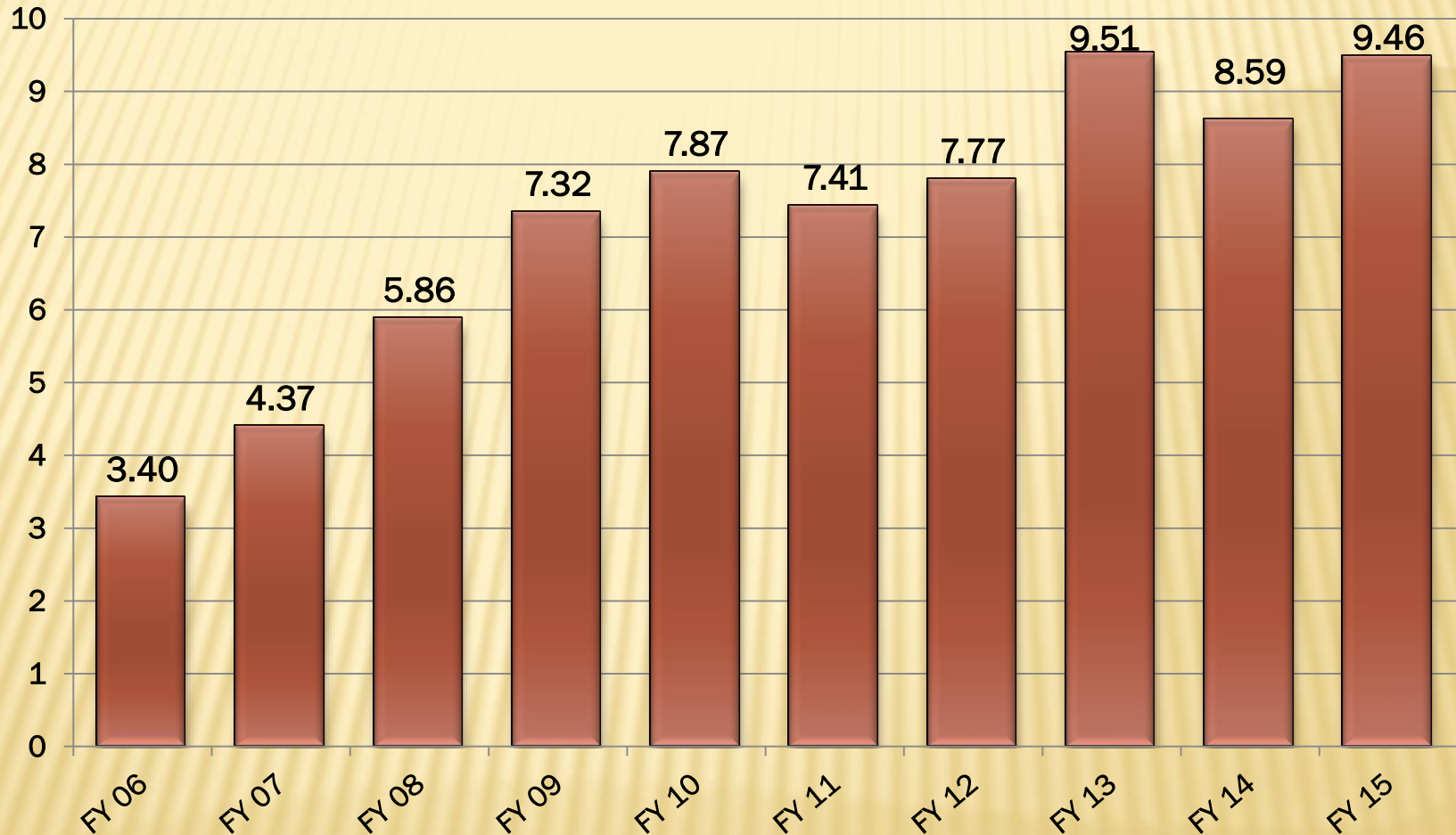
Sales Tax History

Millions



General Fund Balance

Millions



2014 - Transferred \$1.6M to other funds

2015 - Balance as of February 29, 2016

Fund Balances

City of Edwardsville										
FYE 4/30/16										
(.00 omitted)										
Fund #	Fund/Dept Name	Surplus (Deficit) at 4/30/15	Transfer Resolution	AJE"S	Surplus (Deficit) at 4/30/15	TOTAL REVENUES	Total Available	YTD 2/29/16 TOTAL EXPENDITURE	NET Activity	Surplus (Deficit) at 2/29/16
101	General Fund:	8,483,237	(266,000)	376,782	8,594,019	13,038,630	21,632,648	12,167,788	870,842	9,464,860
202	Annexation*	103,971			103,971	34,978	138,948		34,978	138,948
205	Capital Improvement	43,398	94,000	(61,049)	76,349	969,074	1,045,423	1,101,975	(132,900)	(56,552)
210	Civil Defense	14,406		(100)	14,306	6,111	20,417	6,358	(247)	14,059
215	Community Redevelopment	363,890		14,785	378,675	444,380	823,055	217,155	227,225	605,900
225	Grants	13,910		(18,912)	(5,002)	92,492	87,490	87,490	5,002	(0)
235	Liability Insurance	(27,121)	27,000		(121)	587,937	587,816	480,300	107,637	107,516
240	Motor Fuel Tax	664,938		17,897	682,835	610,026	1,292,860	555,456	54,570	737,404
245	Municipal Band	94,063		(28)	94,035	93,289	187,323	88,639	4,650	98,684
250	Parks & Playgrounds	(77,707)		(20,378)	(98,085)	702,310	604,226	643,479	58,831	(39,254)
251	Parks Improvement **	1,309,011		(6,399)	1,302,612	73,864	1,376,476	274,132	(200,268)	1,102,344
252	Wilkey operations	(44,135)		1,828	(42,307)	594,335	552,028	569,266	25,069	(17,238)
255	Retirement	(182,441)	91,000		(91,441)	598,975	507,534	526,322	72,653	(18,789)
256	Social Security	(53,789)	54,000		211	487,380	487,591	429,612	57,768	57,979
260	Street & Bridge	24,885		(25,621)	(736)	597,792	597,056	579,212	18,580	17,844
265	Tourism	33,792		7,205	40,997	107,278	148,275	32,774	74,504	115,501
280	TIF #2	1,162,657		407	1,163,064	745,003	1,908,067	879,733	(134,730)	1,028,334
290	TIF #3	1,314,443			1,314,443	1,556,430	2,870,873	247,669	1,308,761	2,623,204
295	TIF #4	292,420			292,420	497,881	790,301	243,517	254,364	546,784
301	Public Safety Facility	199,281		87,904	287,185	9,775,721	10,062,906	1,397,719	8,378,002	8,665,187
302	Capital Equipment Acquisition	129,000			129,000	208,333	337,333		208,333	337,333
303	SIUE Public Safety Fund	313,132			313,132	2,595	315,727		2,595	315,727
400	Bond Reserve Fund	1,038,635		375	1,039,010	8,668	1,047,678		8,668	1,047,678
410	Incremental Tax Withholding	80,903		4,160	85,063	434,523	519,586	434,523	0	85,063
430	Municipal Facilities ***	(1,026,248)			(1,026,248)	82,642	(943,606)	91,254	(8,611)	(1,034,859)
510	Public Library	576,343		26,067	602,410	1,319,984	1,922,394	1,026,656	293,328	895,738
610	Garbage	54,955		(118,980)	(64,025)	1,694,114	1,630,089	1,518,914	175,200	111,175
6xx	Consolidated Water Fund	10,264,541		270,541	10,535,082	3,983,502	14,518,584	4,422,041	(438,539)	10,096,543
6xx	Consolidated Sewer Fund	13,826,633		487,426	14,314,059	3,446,091	17,760,150	3,006,687	439,404	14,753,463
710	Police Dept Endowment	75,382			75,382	630	76,012		630	76,012
720	Mobile Intensive Care	270,169			270,169	2,390	272,560		2,390	272,560
810	Group Health Insurance	543,762		29,743	573,505	1,972,799	2,546,304	1,961,888	10,912	584,416
952	St. Louis Special Service Area	445			445	34,618	35,063	35,510	(892)	(448)
		39,880,759	0	1,073,653	40,954,412	44,804,775	85,759,187	33,026,069	11,778,706	52,733,118

Town Centre



Prairie Farms Corporate Center



Mannie Jackson Center for the Humanities

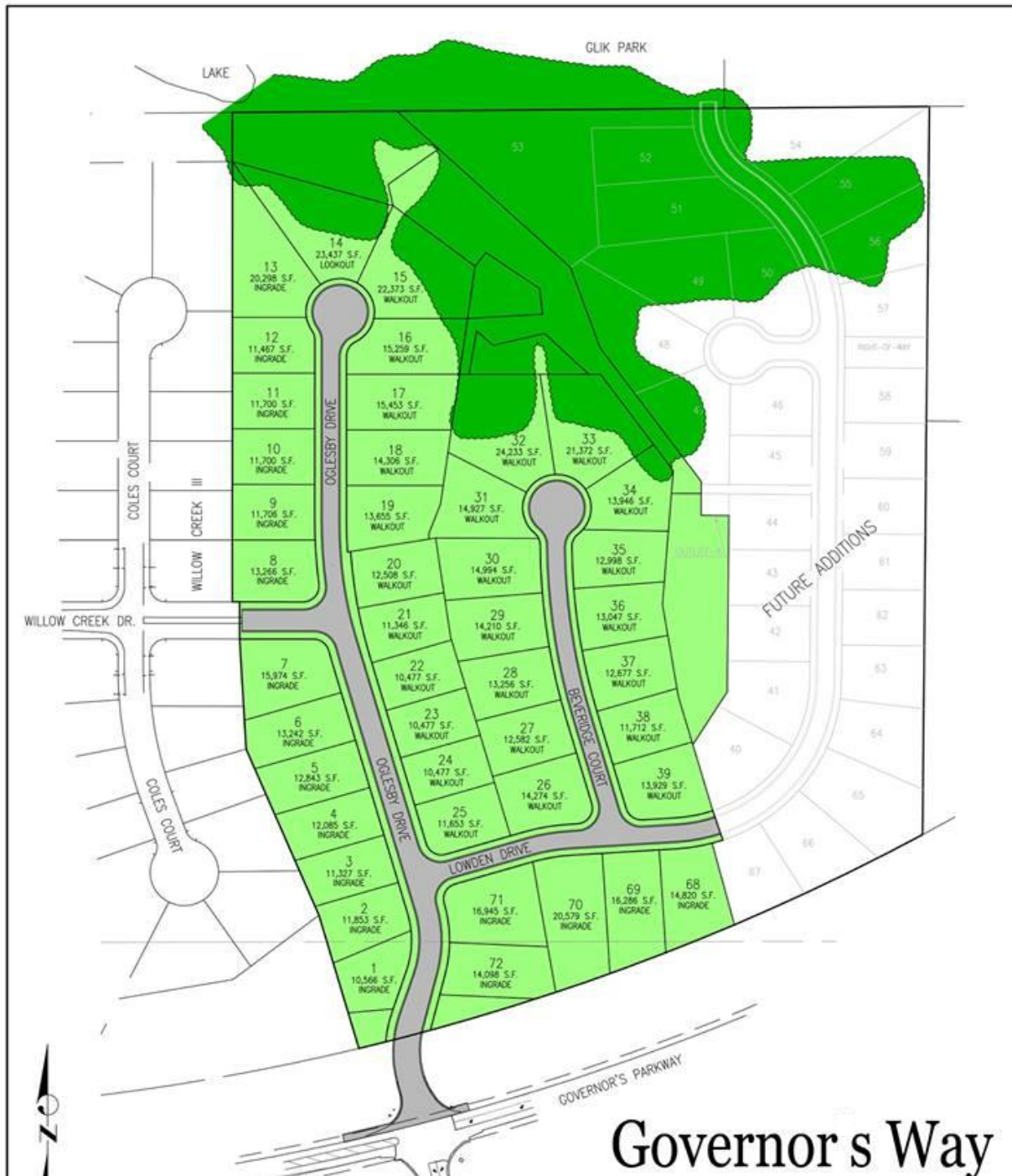


Park Street Plaza



Park Street Plaza





Governor's Way

Governors Way



Brookshire Hamlet



Hawthorne Hills PUD

Goshen Road

Ebbets Field Subdivision



Hawthorne Hills



Cloverdale PUD



Cloverdale PUD



2015 Façade Program



113 Plaza Court (Metcalf Building)



113 Plaza Court (Metcalf Building)



303 N. Main Street (Schulte Building)



Lakeview Commerce Center Spec Building



Lakeview Commerce Center 4



Gateway Commerce Center Groundbreaking Ceremony

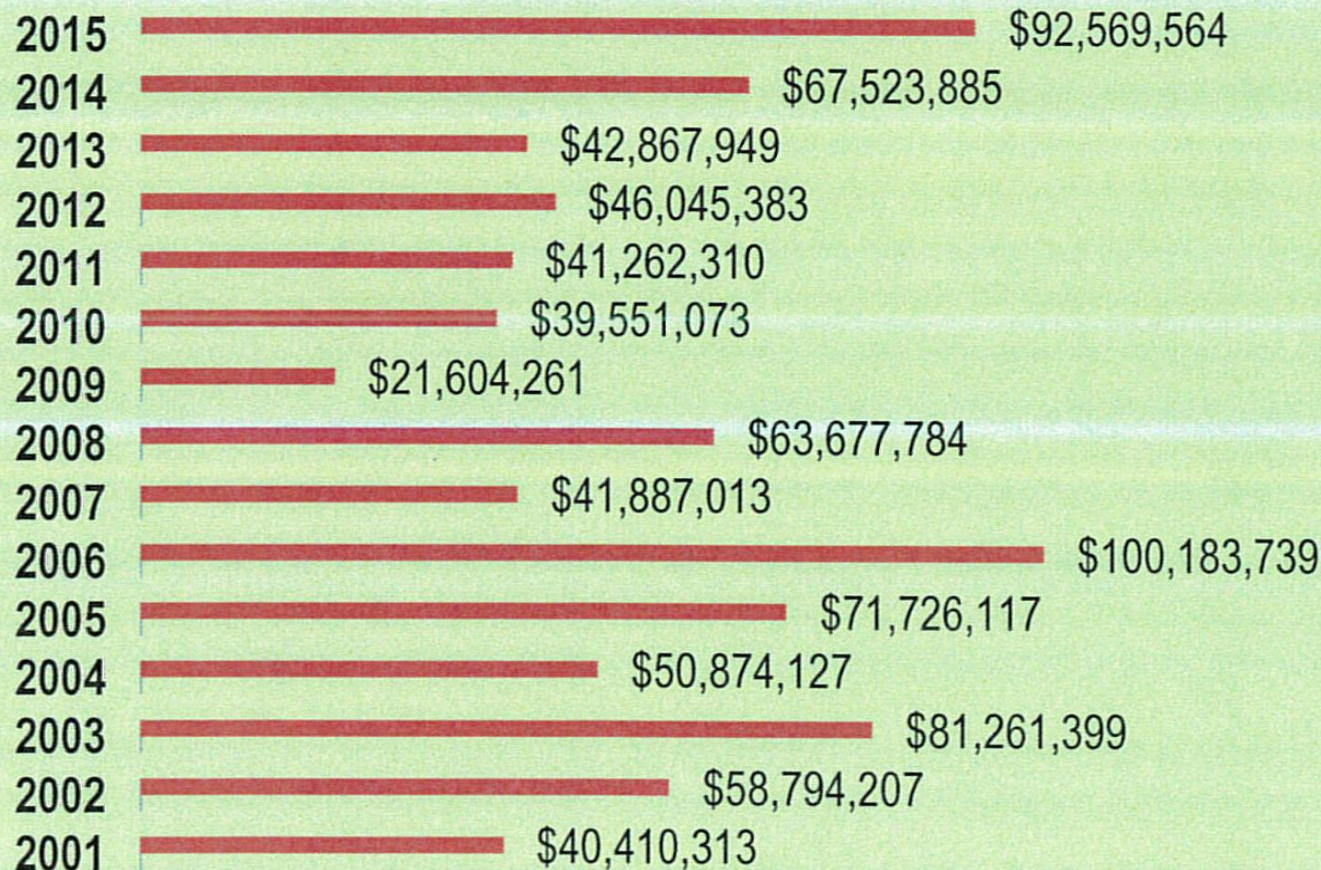


Gateway – East 255



Dollar Value of Construction 2001-2015

Dollar Values of Construction



Planned Road Projects



Third Avenue



Fourth Avenue



Quince Street



Buchanan Street



Linden Reconstruction



Springer Sheridan Resurfacing



Main Street Resurfacing



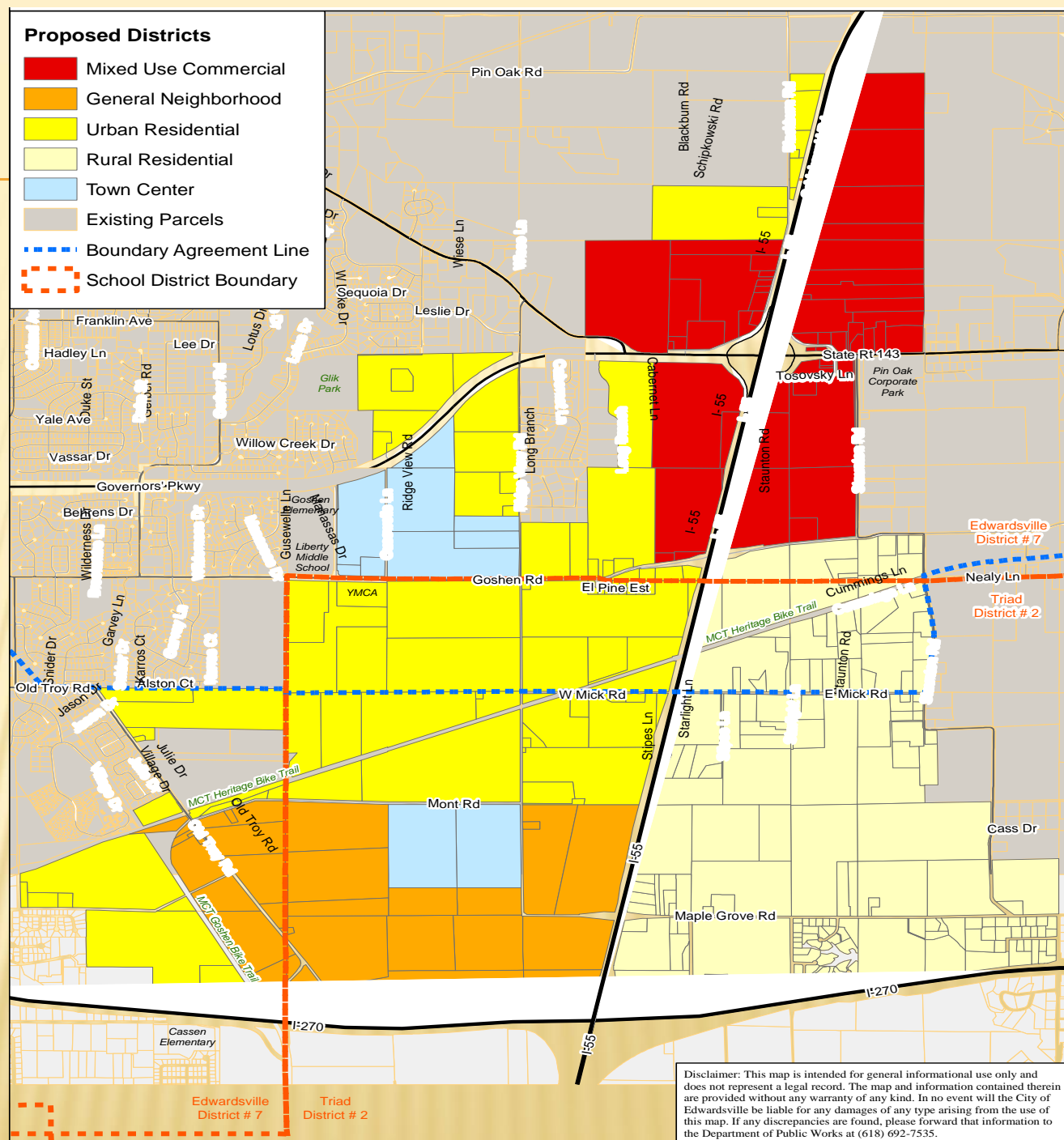
Route 157 Resurfacing



I-55 Corridor

Proposed Districts

- Mixed Use Commercial
- General Neighborhood
- Urban Residential
- Rural Residential
- Town Center
- Existing Parcels
- Boundary Agreement Line
- School District Boundary



Disclaimer: This map is intended for general informational use only and does not represent a legal record. The map and information contained therein are provided without any warranty of any kind. In no event will the City of Edwardsville be liable for any damages of any type arising from the use of this map. If any discrepancies are found, please forward that information to the Department of Public Works at (618) 692-7535.

Special Parks

Watershed
Nature Center



Children's
Museum



Stephenson
House



Wildev Theatre



Parks & Recreation Department

Community & Family Programs Participation April 1, 2015 – March 31, 2016

Senior Trips – 1,032	Flying 4 Kids Kite Fly – 79
IDNR Free Fishing Lessons – 44	Fishing Derby – 66
Movies in the Park – 850	Yoga in the Park - 631
Halloween Costume Contest – 199	Elves Workshop – 65
Holiday Art – 51	Winter Market – 29 vendors
Santa House – 730	Daddy Daughter Valentine Dance – 200
Mother Son Fun Night – 86	Pinterest Parties – 122
Family Campout – 104	Yoga at the Wildey- 204
Route 66 – 10,000 (approximate participants enjoying the festival)	

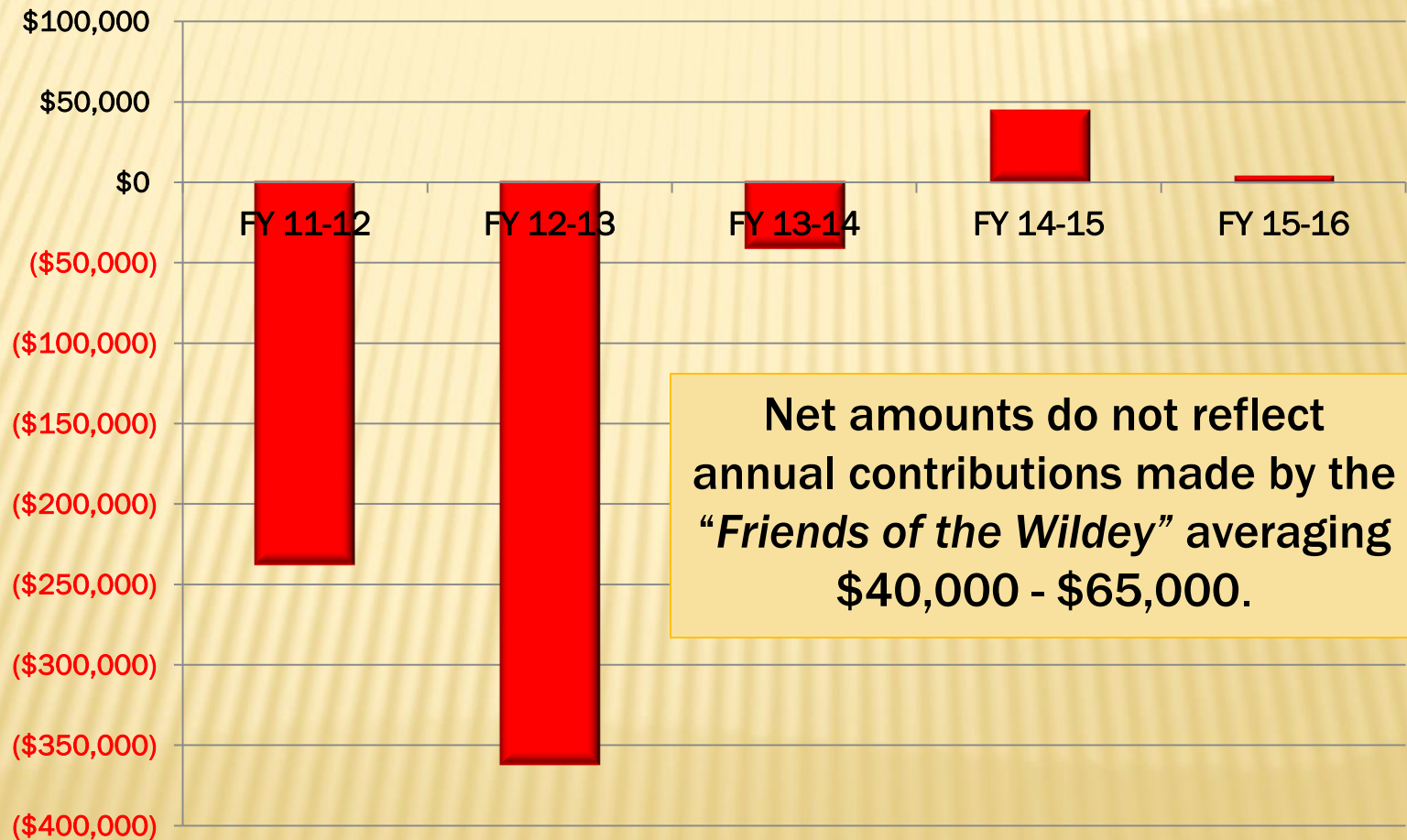
Parks & Recreation Department

Sports Leagues & Tournaments Participation April 1, 2015 - March 31, 2016

Kindergarten /1st	61	2nd	51
3rd	30	4th	51
5/6th	15	7th-12th	0
Co-Ed A Slow pitch	3 teams	Co-Ed B Slow pitch	6 teams
Men's A Slow pitch	6 teams	Men's B Slow pitch	152
Men's Fast pitch	1 team	Co-Ed C Slow pitch	5 teams
Fall Men's Slow pitch (not offered in 2015)	0	Men's Fast pitch McGauley tournament	6 teams

Wildey Theatre (Net)

March 2011 - March 2016



Economic Development Website

www.cityofedwardsvilleecondev.com



Phone: 618-692-7533

[Contact Us](#)

[Home](#)

[Sites & Buildings](#)

[Economic Dashboard](#)

[Industries](#)

[Workforce & Education](#)

[Connectivity](#)

[Life](#)

[More About Us](#)

City of
Edwardsville



Your Next Best

**BUSINESS
DECISION**



"...city fiscal conditions are stabilizing...it's upward, but sluggish. It made us think harder and work together in a collaborative way."

*~ American City & County magazine
March 2016*



Village of Glen Carbon

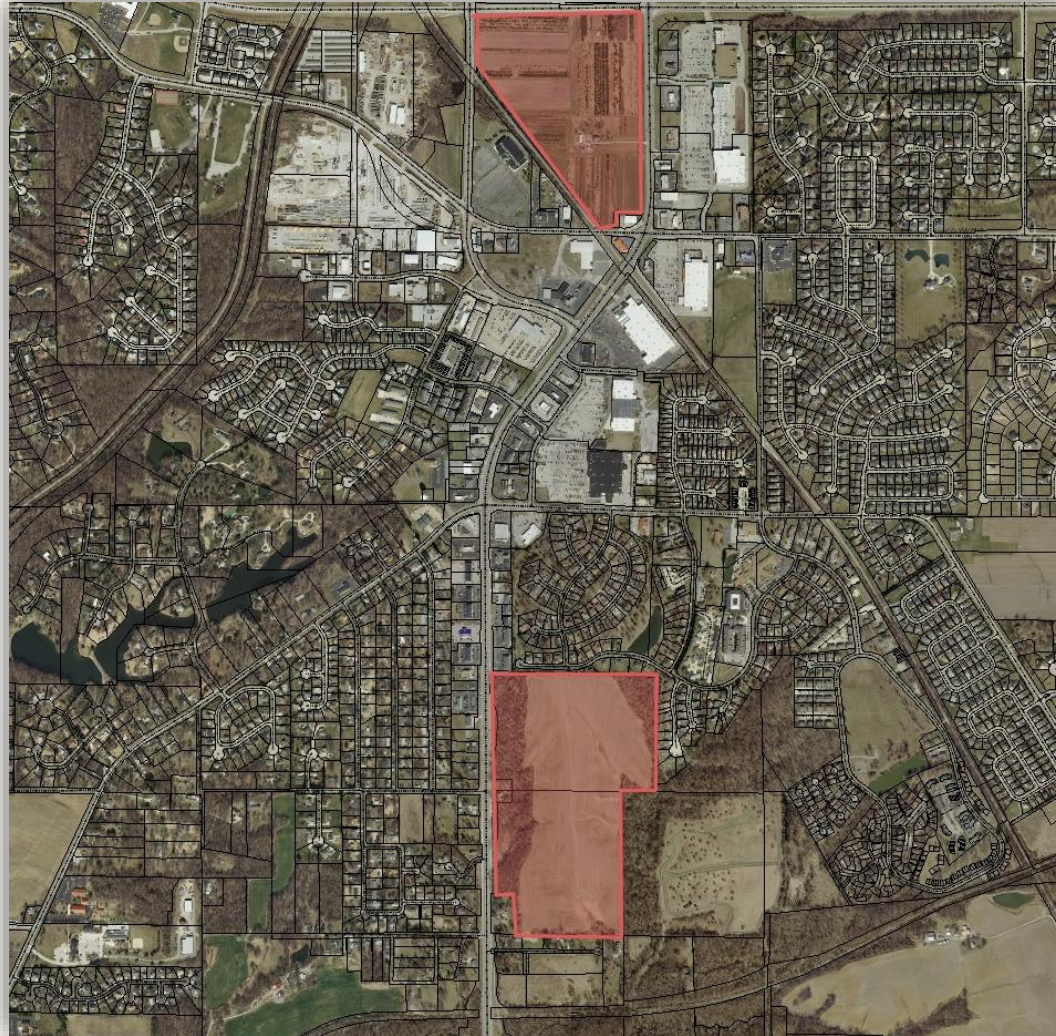
April 2016



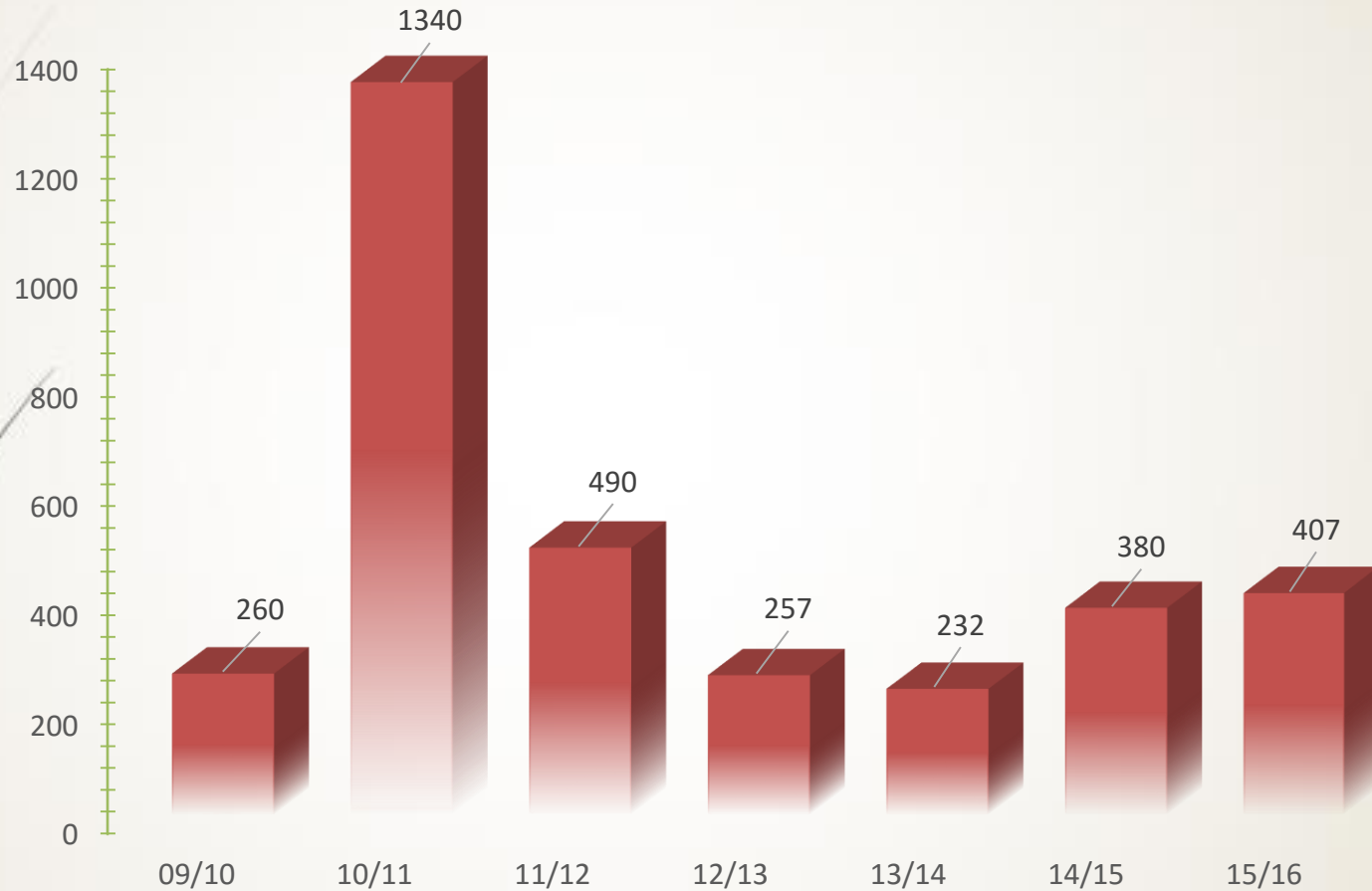




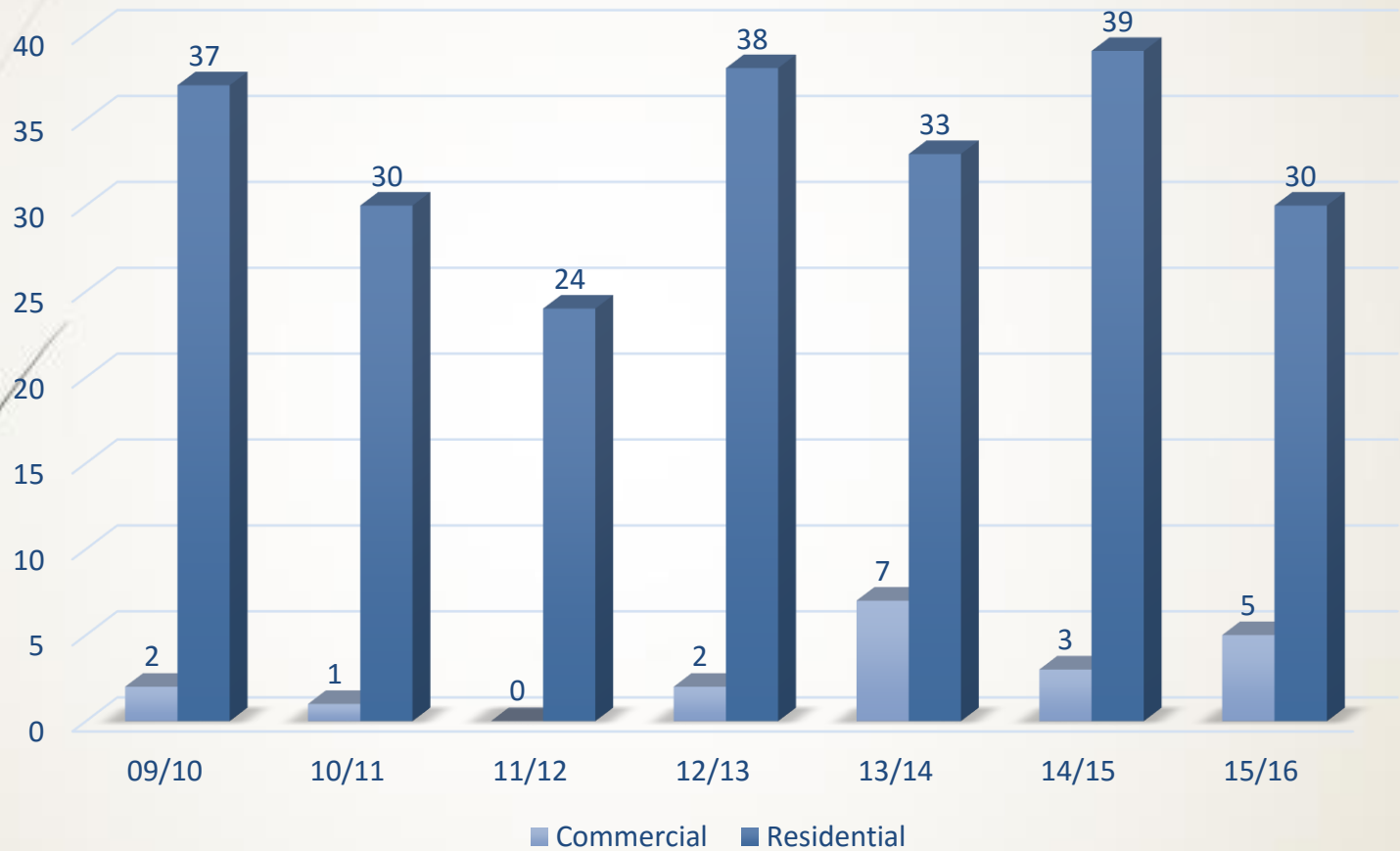
Foucek Property



All Building Permits



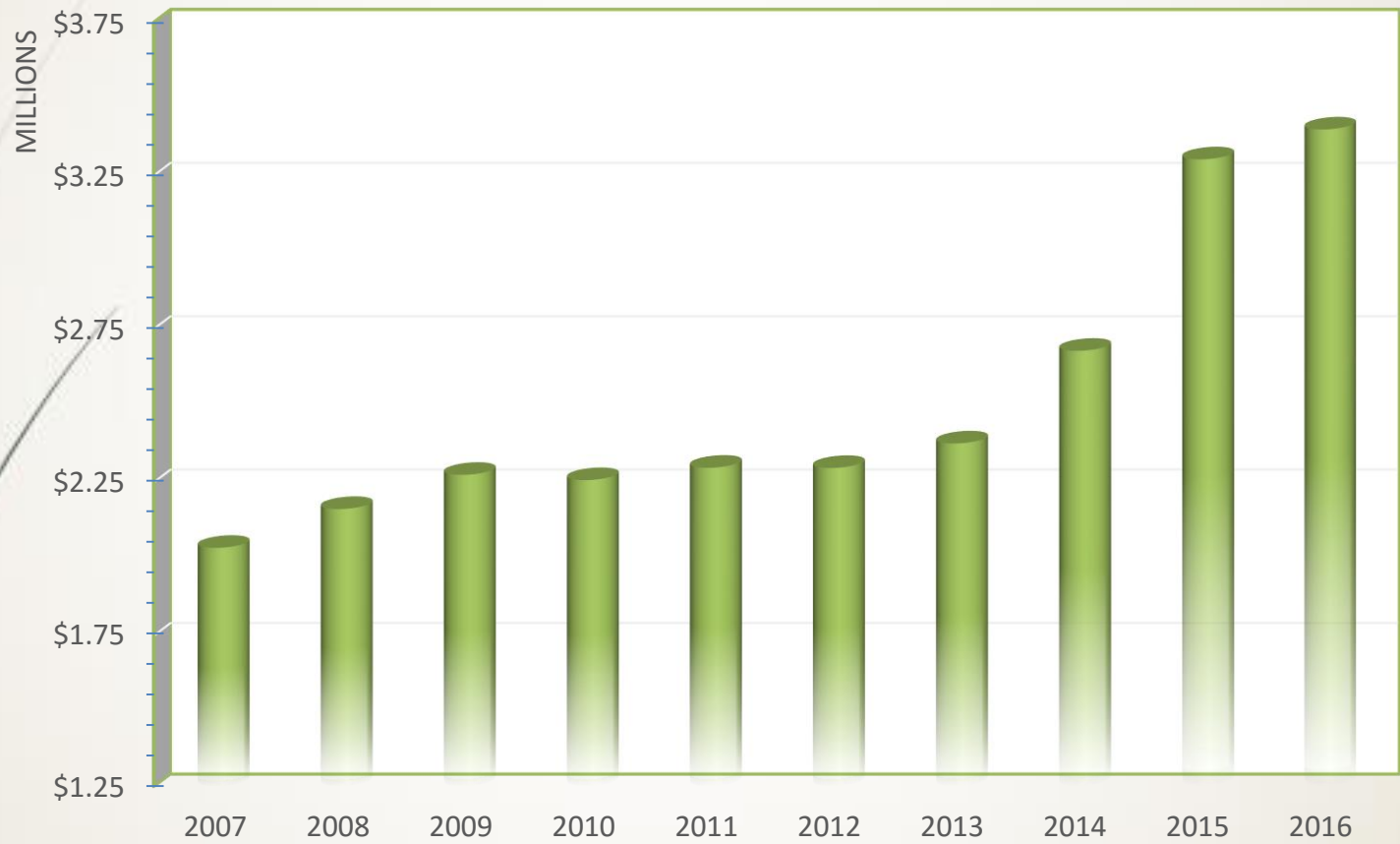
Building Permits New Construction



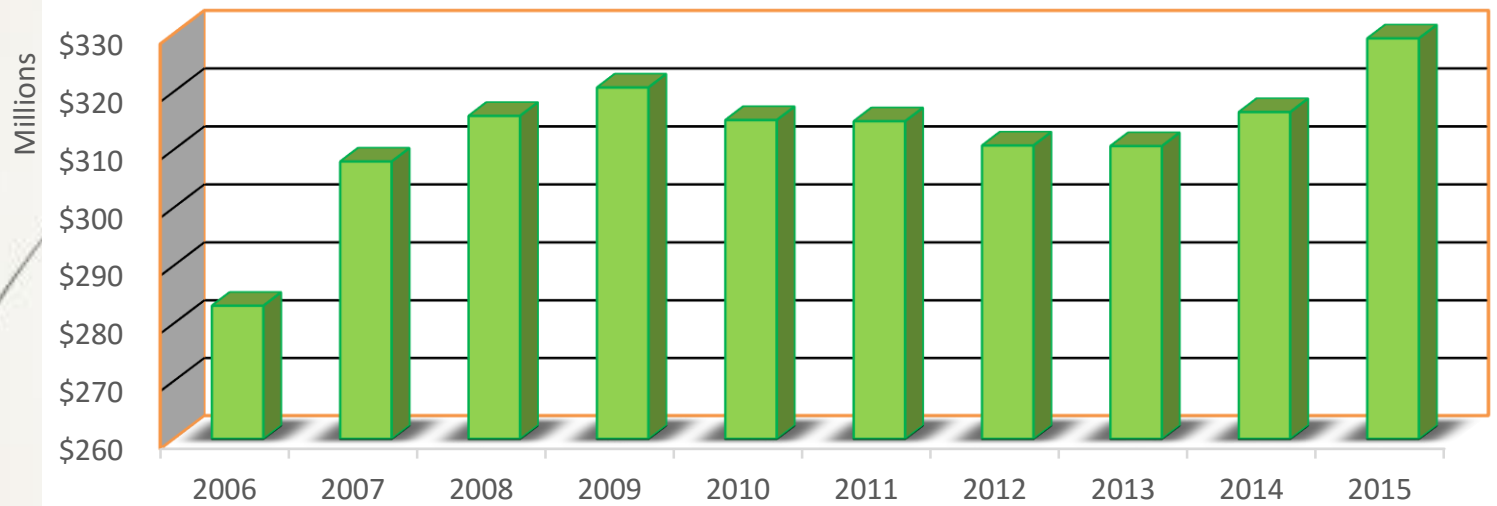
Property Tax Levy History



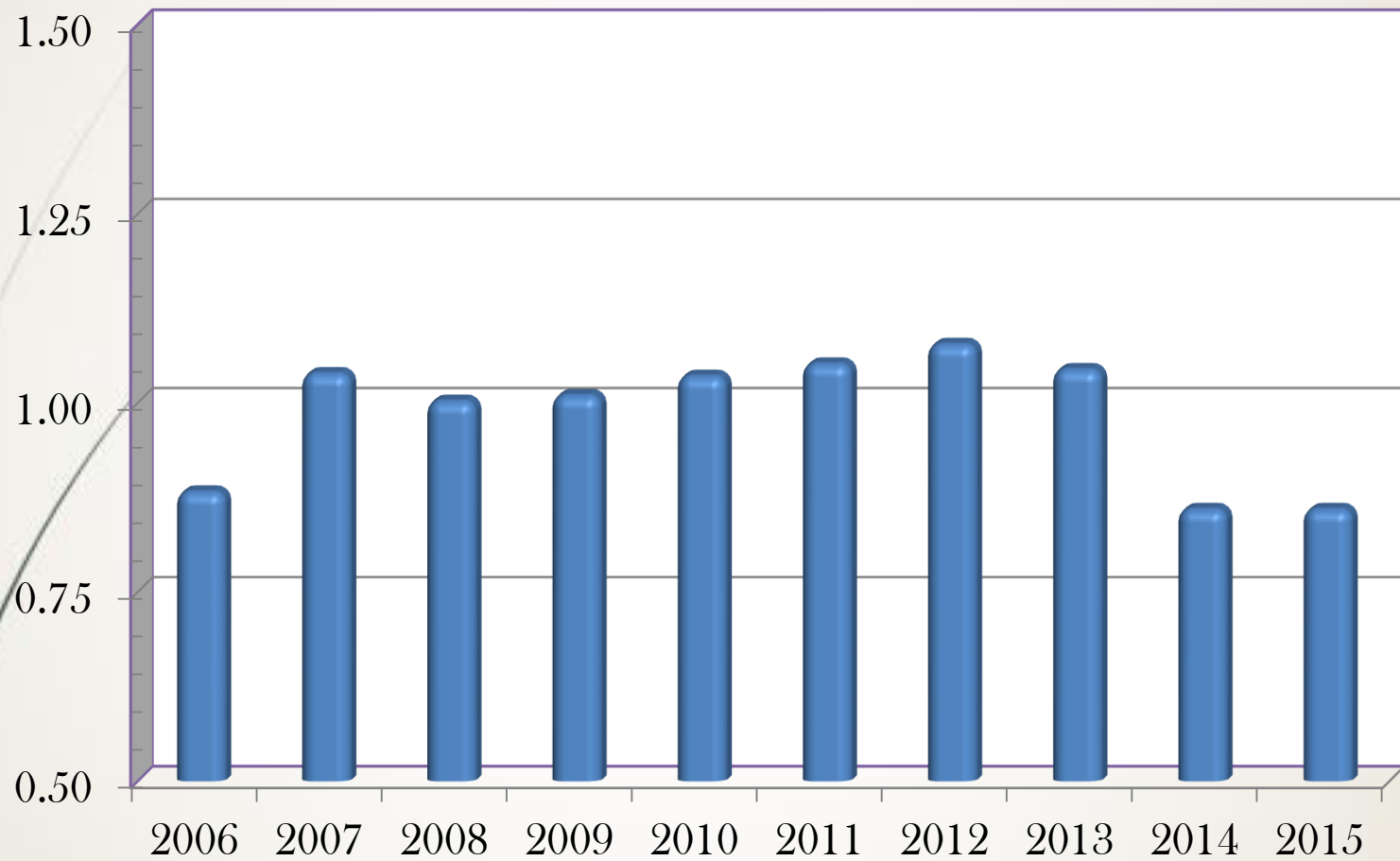
Sales Tax History



EAV (10 Yr. History)



10 Yr. Tax Rate History



Audited Fund Balances at 4/30/2015

Governmental Funds

General	TIF #1	Capital Expenditures
\$3,869,938	\$358,586	\$3,920,320

Enterprise Funds

Water	Sewer	Refuse
\$8,734,387	\$14,328,431	\$140,072




VILLAGE OF GLEN CARBON CAPITAL IMPROVEMENT PLAN

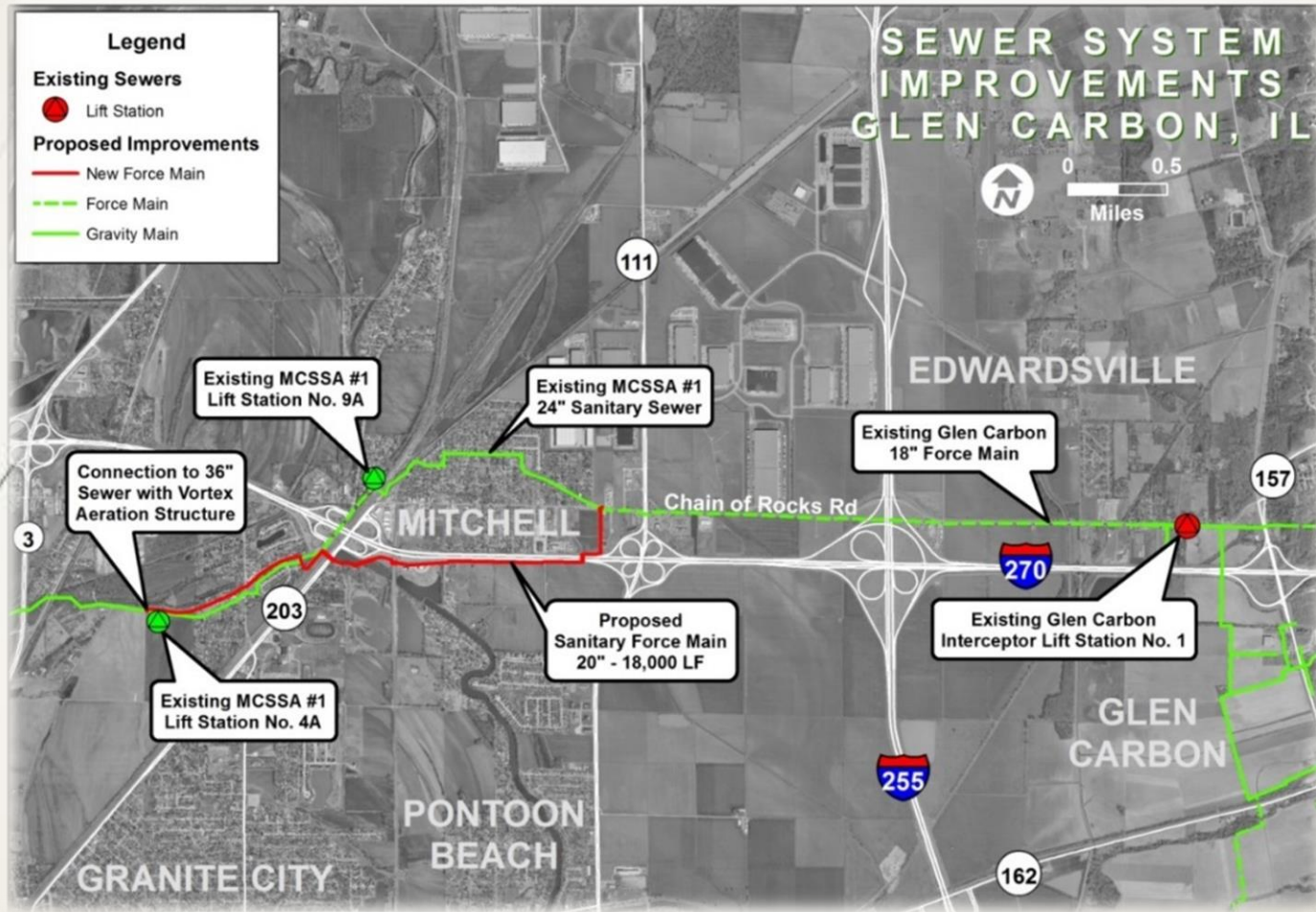


2016 - 2021

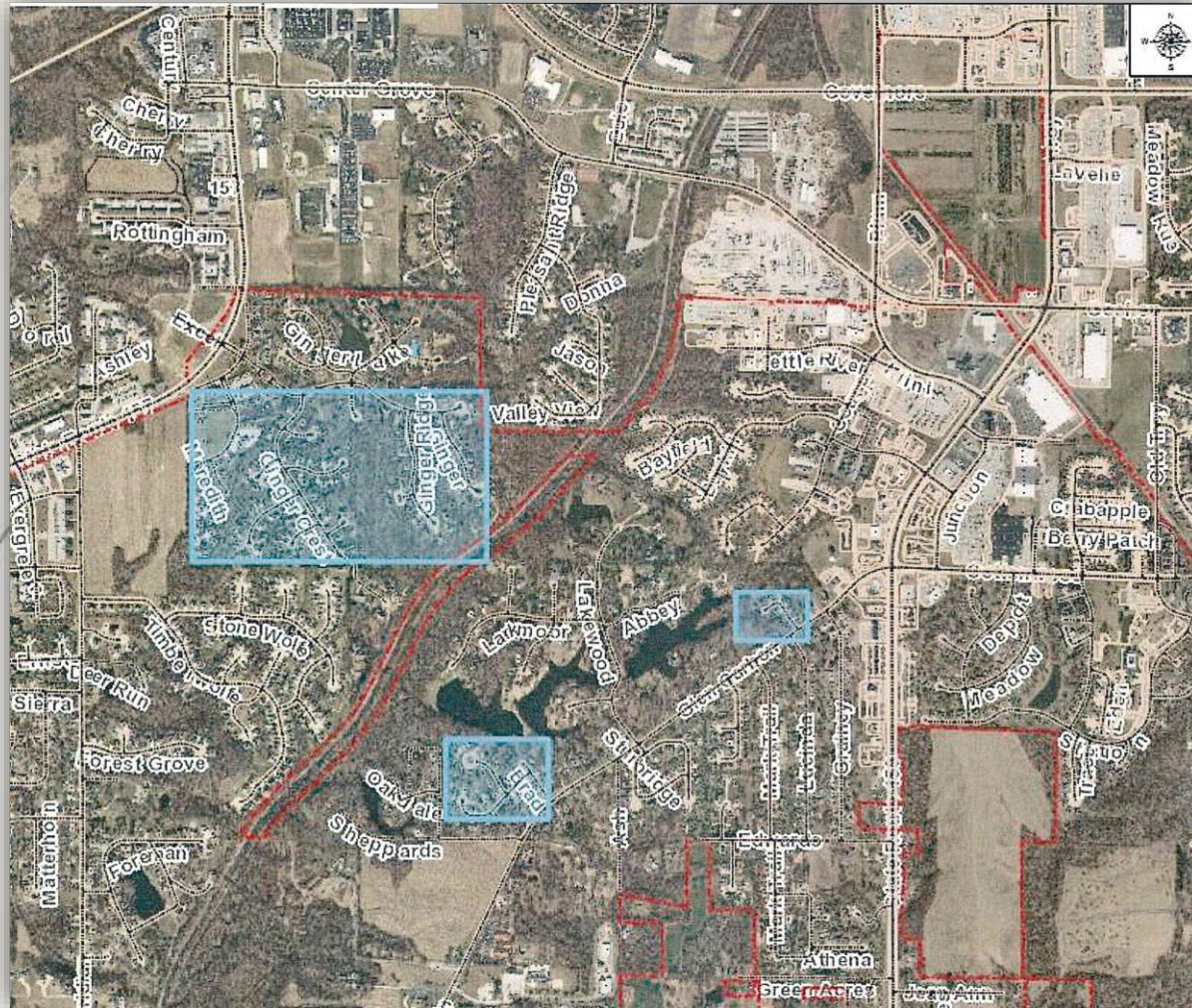
5 Year Capital Plan

Capital Expenditures (270)	Parks Capital Expenditures (310)	Water & Sewer Capital Fund (515/525)	General Fund (110)
Construction for Storm water Project	Final Phase Schon Park	Design Water Main Replacement Phase II for Main Street	New Dispatch Center
Sidewalk Replacement included ADA Compliant		Construction of Sewer Interceptor	
Street & Road Maintenance System Plan Implement			
Phase III Main Street Resurfacing			
Old Troy Road Land Acquisition and Final Design			

Sewer Project



SRMS Transportation & Roadway Maintenance Plan



- Jo Ida, Shingle Oaks and Ginger Creek Overlay



Cottonwood Rd Resurfacing Project



ADA Compliant Sidewalk

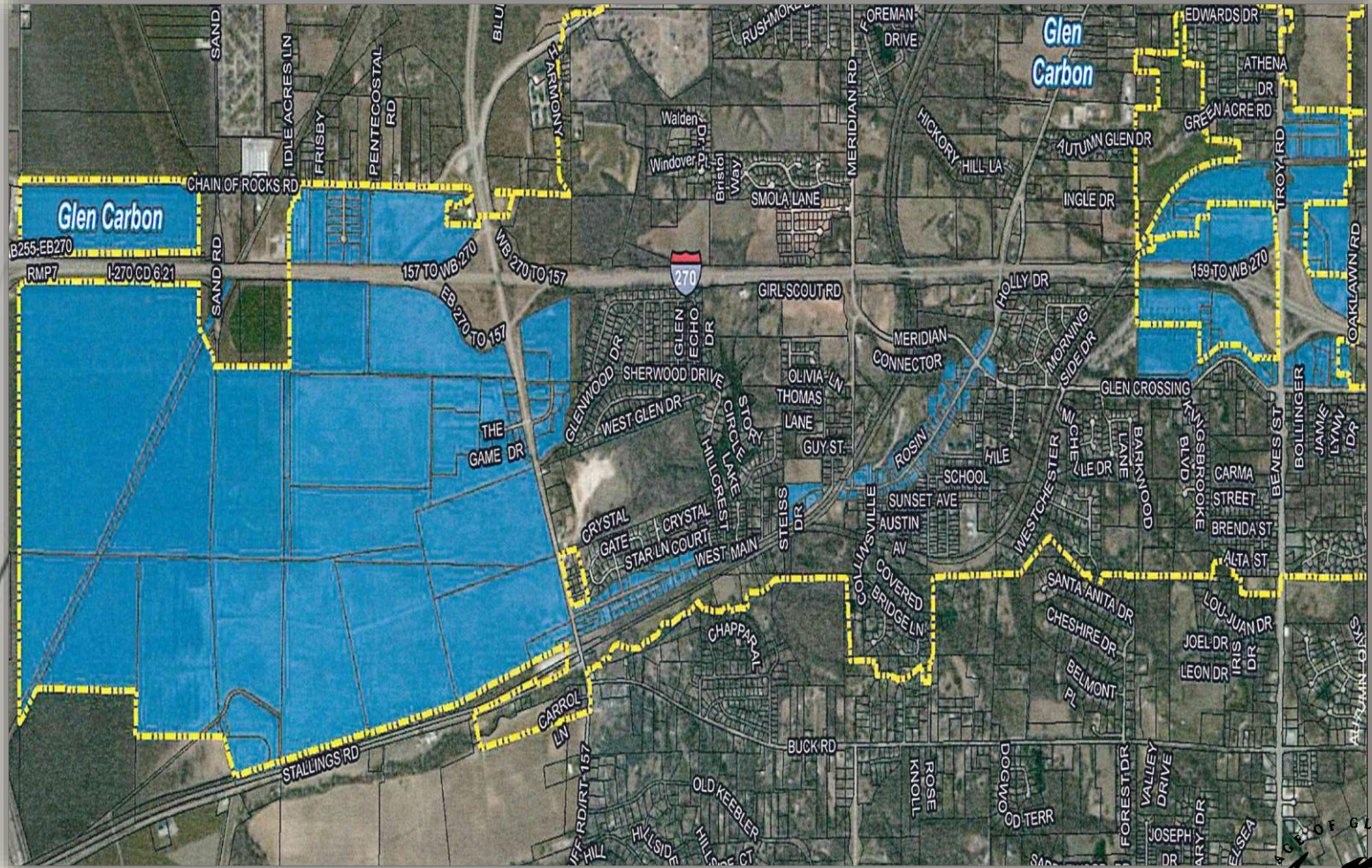


Economic Development

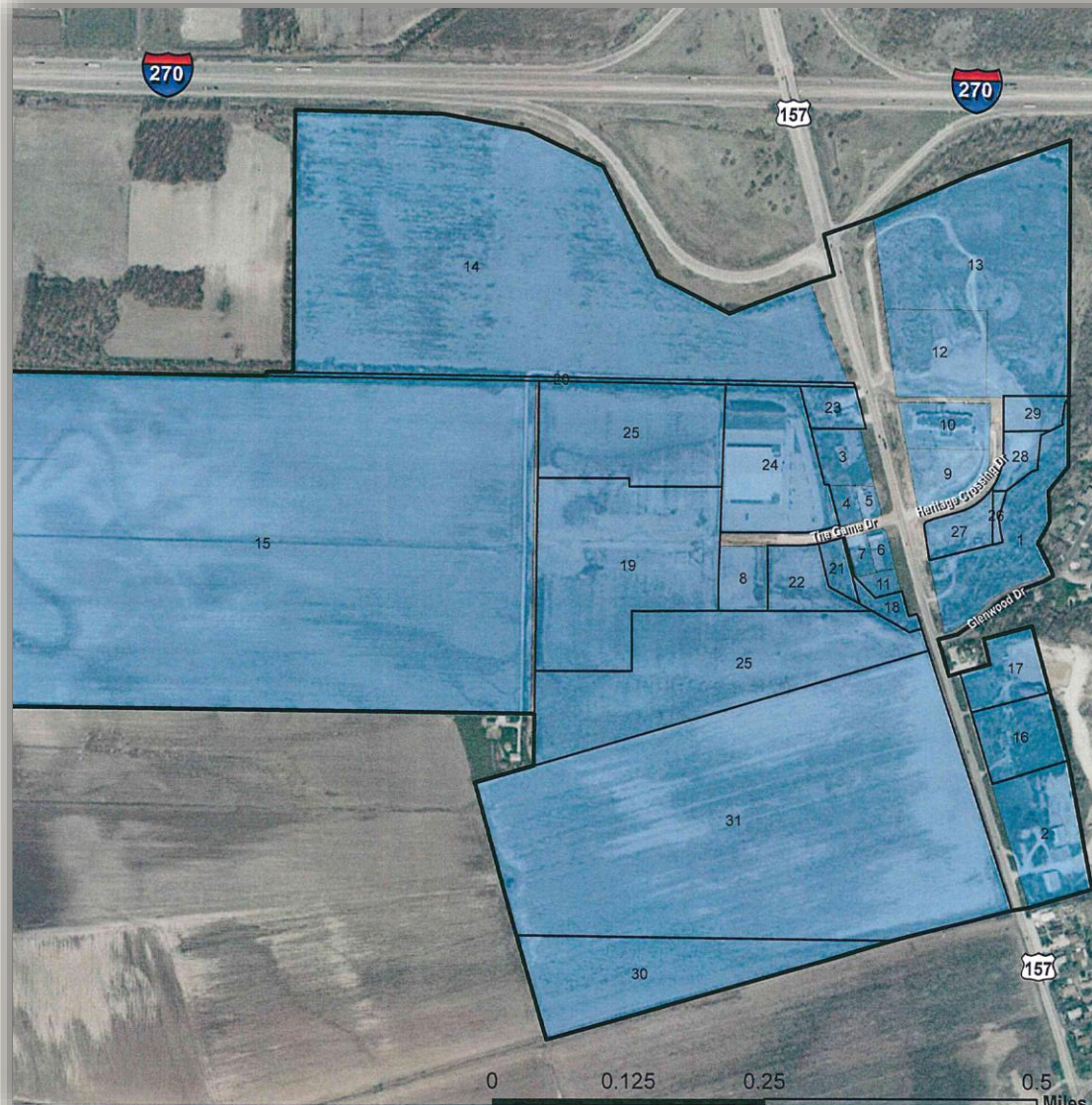
- Madison County Discovery Zone
- Route 157 Business District
- Economic Development Intern:
 - Demographic & Retail Information
 - Property & Business Inventory
 - Liaison to Business Advisory Board & Village Businesses
 - Lead Marketing Efforts
 - Lead on Economic Development Plan



Glen Carbon Area Enterprise Zone Map



Route 157 Business District Map



VILLAGE OF GLEN CARBON

April 7, 2016



TEXT YOUR QUESTION TO 618-267-6991

**The 2016 Mayors' Legislative Breakfast is brought to you by
the Edwardsville/Glen Carbon Chamber of Commerce
Government Affairs Committee & IMPACT Strategies, Inc.**



Edwardsville | Glen Carbon
Chamber of Commerce

