



ELKO AREA CHAMBER

ELKO ■ SPRING CREEK ■ LAMOILLE ■ CARLIN

# THE VOICE OF BUSINESS

April 2026



Jennifer Koopman

1405 IDAHO STREET ELKO, NEVADA 89801 775.738.7135 WWW.ELKONEVADA.COM

GET YOUR BRAND OUT THERE



MAY 9TH & 10TH, 2026  
AT THE ELKO CONVENTION CENTER

## AT THE 2026 ELKO HOME SHOW

What do we need? Your SWAG!

For 200 Swag Bags given away on Saturday and Sunday at our Home Show.

Drop off any of your business' Promotional Items to the Elko Area Chamber no later than May 4th!

FOR MORE INFORMATION: 775.738.7135 OR [EVENTS@ELKONEVADA.COM](mailto:EVENTS@ELKONEVADA.COM)

THANK YOU TO OUR NEWSLETTER SPONSORS FOR YOUR COMMUNITY AND BUSINESS SUPPORT!

MILLER

Gallagher FORD

BENCH ELECTRIC

RNDC

EFCU

The Villas at Riverside

PRINCESS AND A REDNECK

HOME 2 SUITES BY HILTON

INTENTIONAL IMAGE CONSULTING

NEVADA GOLD MINES OPERATED BY BARRICK

RUBY VISTA APARTMENTS ELKO, NV

THE BUSINESS BEHIND YOUR BUSINESS

# WELCOME NEW MEMBERS!

## EXECUTIVE COMMITTEE

### CHAIR

Jaymie Donovan  
*Orla Mining*

### 1ST VICE CHAIR

Todd Sorenson  
*Elko Federal Credit Union*

### 2ND VICE CHAIR

Randy Ridgway  
*Blach Distributing*

### TREASURER

Kacie Ortiz  
*Elko Veteran Corps*

### PAST CHAIR

Katie Krenka  
*Everything Elko*

## BOARD OF DIRECTORS

### Fallon Dalling

*Kinross Bald Mountain*

### Hayley Bammesberger

*Hayley's*

### Lori Ayala

*A+ Total Care*

### Cheryl Henning

*NextHome Infinity Realty*

### Dr. Micah Williams

*Total Eye Care*

### Matt Miller

*Nevada Gold Mines*

### JB Anderson

*Riverton Elko GM Superstore*

### Marc Smith

*Iron Pig*

### Leslie Maple

*Great Basin College*

### Shirley Alen-Kellerman

*Rural Nevada Development Corp.*

### Los Luna Lawn Care

Fernando Luna (Owner)  
Elko, NV 89801  
775-544-1706

### Osiris IPM LLC

Marcus Conner (Owner)  
Spring Creek, NV 89815  
775-340-3969

### Orica Specialty Mining Chemicals

Brandie McDaniel  
(Director of Commercial Sales)  
5505 Cyanco Dr.  
Winnemucca, NV 89445  
775-539-5129

### Jo Mama's Kitchen

Joann Esparza (Owner)  
267 Spring Creek Parkway  
Spring Creek, NV 89815  
775-385-6797

### Nevada Autism Center

Vladimir Kogan (CEO)  
7730 West Sahara Ave. #115  
Las Vegas, NV 89117  
702-660-2005

### Incognito Window Tinting & Detailing

Lleslie & Lupe Flores (Owners)  
255 11th St  
Elko, NV 89801  
775-934-3632

## RIBBON CUTTINGS



### TDCM Inc

ClairAnn Higley  
(Board Director)  
249 Parkchester Dr.  
Spring Creek, NV 89815  
775-738-2700



### NY Roots Cookie Co

Nikiera Robison (Owner)  
Elko, NV 89801  
315-775-7932



### Convergence Health Specialty Clinic

Amber Kenyon  
(Operations Manager)  
2120 Idaho St.  
Elko NV, 89801  
775-389-5777

## Business After Hours April Raffles

**Businesses:** If you are a member of the Chamber, you may enter our free raffle! Winners will receive a FREE Banner Ad for one month on our website.

**Public:** If this is your first time at Business After Hours you may enter our other free raffle! The winner this month will receive \$25 in Chamber Checks!



April 16th

Ledgestone Hotel  
2585 E. Jennings Way  
Elko, NV 89801  
5:30-7:00 PM

WESTERN  
FOLKLIFE  
CENTER



ELKO AREA CHAMBER



## Elko Area Chamber Member Luncheon



**TACO TUESDAY!**  
**APRIL 21, 2026**  
**12 - 1:30 PM**



**WESTERN FOLKLIFE CENTER**

The Elko Area Chamber Board of Directors and Staff would like to show our appreciation for your support of the Chamber and our community. Come learn about current and upcoming Chamber opportunities! Plus enter to win some FREE giveaways!

RSVP BY END OF DAY APRIL 16, 2026  
CEO@ELKONEVADA.COM | 775-738-7135

*Lunch Sponsored by Our Board of Directors*

**THE ELKO AREA CHAMBER PRESENTS**

## THE 16TH ELKO BEER FESTIVAL



### SPONSORSHIP OPPORTUNITY

The Elko Beer Festival will be held on June 26th at the Sherman Station and Visitor Center starting at 5 PM with Blach Distributing providing over 90 Beers to be sampled throughout the evening. There will also be live music, food, games and giveaways. What makes this year special? The **Red, White & Brew** theme - we're celebrating America's 250th Anniversary as well as Budweiser's 150th Anniversary!

The Elko Area Chamber would love to have your business be a part of it. Currently, we have spots open for sponsoring this community event which is a perfect opportunity to get your business out there.

**CONTACT 775-738-7135 OR EVENTS@ELKONEVADA.COM**

2026 BUSINESS  
AFTER HOURS

JANUARY 15  
Komatsu

FEBRUARY 19  
Everton Mattress &  
Furniture Outlet

MARCH 19  
Nevada Health Centers &  
SilverSummit HealthPlan

APRIL 16  
LedgeStone Hotel

MAY 21  
Kaza Realty

JUNE 18  
Convergence Health

JULY 16  
Elko Lions Club

AUGUST 20  
Presidio Realty

SEPTEMBER 17  
Lostra Esthetics

OCTOBER 15  
Major League Audio

NOVEMBER 19  
Princess & A Redneck

DECEMBER 17  
Christmas Party

NEXT BUSINESS  
BEFORE HOURS

April 9  
Red Wing Shoe Store

CHAMBER STAFF

Billie Crapo  
CEO

Meghan Micheli  
Marketing & Program  
Coordinator

Katie Ashley  
Membership Support  
Coordinator

Katie Bawcom  
Member Services /  
Visitor Center  
Coordinator

# CLEAN UP GREEN UP

Saturday April 25, 2026  
8am - 11am

To Register: [elkocity.com](http://elkocity.com)

Questions?: 775-777-0560 or [envco@elkocitynv.gov](mailto:envco@elkocitynv.gov)

Trash bags will be supplied.

Please dress appropriately for the weather.



## SAVE THE DATES:



→ JUNE 13, 2026

ISLAND BREEZE  
COCKTAIL WALK

→ AUGUST 1, 2026

CAPE CRUSADE: SUPERHEROES  
vs VILLAINS COCKTAIL WALK

→ SEPTEMBER 19, 2026

BALLOONS & BUBBLY  
COCKTAIL WALK

→ OCTOBER 17, 2026

SIP OR TREAT  
COCKTAIL WALK

→ NOVEMBER 21, 2026

SANTA CRAWL COZY  
COCKTAIL WALK

# THE VOICE OF BUSINESS



Chamber Membership

## Spotlight



### Your NextHome Starts Here: NextHome Infinity Realty



This month, the Elko Area Chamber is proud to spotlight NextHome Infinity Realty, a trusted name in local real estate and a dedicated member of the Chamber since 2019. Led by Broker/Owner Cheryl Henning, the business brings years of experience, passion, and a client-first approach to the Elko community.

#### A Passion for Helping People

With 18 years of experience as a REALTOR® and 6 years as the Broker/Owner of NextHome Infinity Realty, Cheryl Henning has built her business around one simple motivation: making people happy. Whether helping clients find their dream home or guiding them through selling a property and moving on to their next adventure, the team at NextHome Infinity Realty is committed to creating a positive and rewarding experience every step of the way.

#### Chamber Partnership & Community Collaboration

Since joining the Elko Area Chamber, NextHome Infinity Realty has remained actively engaged in the local business community. The team values the many opportunities the Chamber provides, from networking events to marketing and advertising support. Their involvement has helped them stay connected, visible, and continuously growing. Cheryl especially appreciates the Chamber's willingness to support members and amplify their presence through social media.

Cheryl's dedication to the community extends well beyond her business. She serves as a Chamber Board member and is actively involved in the Ambassador Committee, helping welcome and support fellow members. In addition, she is an active member of Soroptimist and contributes her time to LASSO (Local Animal Shelter Support Organization), reflecting her strong commitment to giving back and making a difference in Elko.

#### What Sets Them Apart

NextHome Infinity Realty prides itself on putting clients first. Their approach is rooted in being educated, ethical, honest, and loyal—values that guide every interaction. They focus on building strong relationships and earning trust, ensuring clients feel confident and supported throughout the entire real estate process. Their goal is not only to meet expectations but to consistently exceed them.

#### Chamber Checks

At this time, NextHome Infinity Realty does not accept Chamber Checks. However, their ongoing involvement with the Chamber continues to strengthen their presence and contribution to the local business community.

#### Advice for New Business Owners

For those just starting out, Cheryl encourages new business owners to take full advantage of Chamber resources. Attending events, networking, and coming prepared with business cards and a clear message about their services can make a significant difference. She also emphasizes not being afraid to ask the Chamber for help, as it can be a valuable partner in business growth.

NextHome Infinity Realty exemplifies professionalism, dedication, and community connection. The Elko Area Chamber is proud to have them as a valued member and looks forward to their continued success in helping clients navigate one of life's most important decisions.

**For More Information: (775) 738-HOME (4663)**

**[www.nexthomeinfinityrealty.com](http://www.nexthomeinfinityrealty.com)**



**2026 CHAMBER  
EVENTS**



**MAY 9 & 10  
Elko Home Show**

**JUNE 13  
Sippin' Saturday**

**JUNE 26  
Beer Festival**

**JULY 25  
Sherman Dinner**

**AUGUST 1  
Sippin' Saturday**

**SEPTEMBER 19  
Sippin' Saturday**

**OCTOBER 17  
Sippin' Saturday**

**OCTOBER 22,  
23 & 24  
Ghost Tours**

**NOVEMBER 21  
Sippin' Saturday**

**DECEMBER 3  
Light Up the Night**

**DECEMBER 12  
Snowflake Festival &  
Parade of Lights**

**DECEMBER 17  
Christmas Party**





# THE VOICE OF BUSINESS

## April

| S                           | M  | T   | W  | TH   | F  | S  |
|-----------------------------|--|---|--|--|--|--|
|                             |  |   | 1  | 2  | 3  | 4  |
|                             |  |   |  |  | <p><b>Good Friday</b><br/><b>Chamber Closed</b></p> <p>Cross Eyed Goat Bar &amp; Grill Trivia Night<br/>775-255-1220</p>             | <p>Ridley's Family Market<br/>Easter Egg Hunt<br/>775-738-9248</p> <p>Nevada Outdoor School Sunshine Stroll<br/>775-777-0814</p>   |
| 5                           | 6  | 7   | 8  | 9  | 10   | 11   |
| <p><b>Easter Sunday</b></p> | <p>City of Elko Elko Regional Airport<br/>100 Year Air Mail Celebration<br/>775-777-7100</p> | <p>Horizon Hospice Group Grief Support<br/>775-778-0612</p> <p>Elko Police Dept. Community First Tuesday<br/>775-777-7310</p> | <p>Rubies Sports Bar &amp; Nightclub Ignite &amp; Inspire Women Professionals Event<br/>775-753-7294</p> | <p><b>Ambassadors Meeting</b></p> <p><b>Business Before Hours: Red Wing Shoe Store</b></p> | <p>Northern NV Jobs Elko Career Fair<br/>northernnvjobs.com</p> <p>Cross Eyed Goat Bar &amp; Grill Trivia Night<br/>775-255-1220</p> | <p>Northeastern Nevada Museum Second Saturday<br/>775-738-3418</p> <p>Spring Creek Association Spring Kick-Off Rodeo<br/>775-753-6295</p> <p>Elko Hockey Association BINGO<br/><a href="https://www.facebook.com/KimberlyHessVargas">https://www.facebook.com/KimberlyHessVargas</a></p> |
| 12                          | 13   | 14  | 15   | 16   | 17   | 18   |
|                             | <p><b>Government Affairs</b></p>   | <p><b>Exec Board Meeting</b></p>  | <p>Western Folklife Center Jam On!<br/>775-738-7598</p>  | <p><b>Business After Hours: Ledgestone Hotel</b></p>                                       | <p>Cross Eyed Goat Bar &amp; Grill Trivia Night<br/>775-255-1220</p>   | <p>Elko Daily Free Press Women In Business <a href="http://elko-daily.com/contests/women-in-business">elko-daily.com/contests/women-in-business</a></p> <p>Goldies Bar 34th Anniversary<br/>775-738-5505</p>   |
| 19                          | 20   | 21  | 22   | 23   | 24   | 25   |
|                             |  | <p><b>Elko Area Chamber Membership Luncheon</b><br/>775-738-7135</p>  | <p>Elko CattleWomen's 70th Anniversary Banquet<br/>208-599-2483</p>                                      | <p>Red Wing Shoe Store Skills to Start Event<br/>775-385-6943</p>                          | <p>Cross Eyed Goat Bar &amp; Grill Trivia Night<br/>775-255-1220</p>   | <p>City of Elko Clean Up Green Up<br/>775-777-7100</p> <p>Charlee's Bar Glow in the Dark Party<br/>775-934-8996</p>  |
| 26                          | 27   | 28  | 29   | 30   |  |  |
|                             |  |   |  | <p><b>Lunch &amp; Learn</b></p>  |  |  |



# ELKO AREA CHAMBER

ELKO ■ SPRING CREEK ■ LAMOILLE ■ CARLIN

1405 IDAHO STREET  
ELKO, NEVADA 89801

## NEVADA HEALTH CENTERS & SILVERSUMMIT HEALTHPLAN



### MISSION STATEMENT

The Elko Area Chamber promotes economic growth, opportunity, and diversity in service for our members. We are the business behind your business.

## KELLER WILLIAMS VIP



### Business After Hours:

APRIL 16, 2026, 5:30-7 PM  
LEDGESTONE HOTEL  
2585 E. Jennings Way

### BUSINESS BEFORE HOURS:

APRIL 9, 2026, 8-9AM  
RED WING SHOE STORE  
2405 MOUNTAIN CITY  
HWY #101



Our mission is to enhance the quality of life for children with cancer and their families by providing financial assistance and compassionate support programs while advocating for increased research funds and raising public awareness.



## NNCCF FOUR PILLARS OF FAMILY SUPPORT

*At the Heart of our Mission are Four Pillars of Family Support*



### FINANCIAL ASSISTANCE

Helping families manage the unexpected and overwhelming costs of childhood cancer.

- Household Expenses
- Medical Expenses
- Travel Expenses
- Bereavement Expenses



### EMOTIONAL SUPPORT

Creating community through compassionate support, meaningful connection, and moments of joy.

- Family Events
- Bell Ringing Celebrations
- Toy Closet
- Hospital Necessities Wagon
- Beads of Courage
- Family Navigation
- Hope for the Holidays



### EDUCATIONAL SUPPORT

Helping children and families stay connected to school and plan for the future.

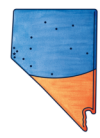
- E-Smart - K-12 Educational Support
- Inspire Scholarship Program - College and Continued Education



### MENTAL HEALTH SUPPORT

Ensuring families have access to professional, compassionate mental health care.

- Collaboration with Mental Health Providers
- Priority Scheduling
- Family Counseling
- Play Therapy
- Grief and Loss Support



We help anyone  
**25 and under**  
who has or had cancer and  
currently lives in northern Nevada

More than  
**\$12 million**  
in direct financial  
assistance to families

About  
**70%**  
of Nevada's  
geographic area served

More Than  
**\$3.9 million**  
raised for childhood cancer  
research at Shave for the Brave

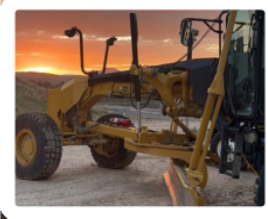
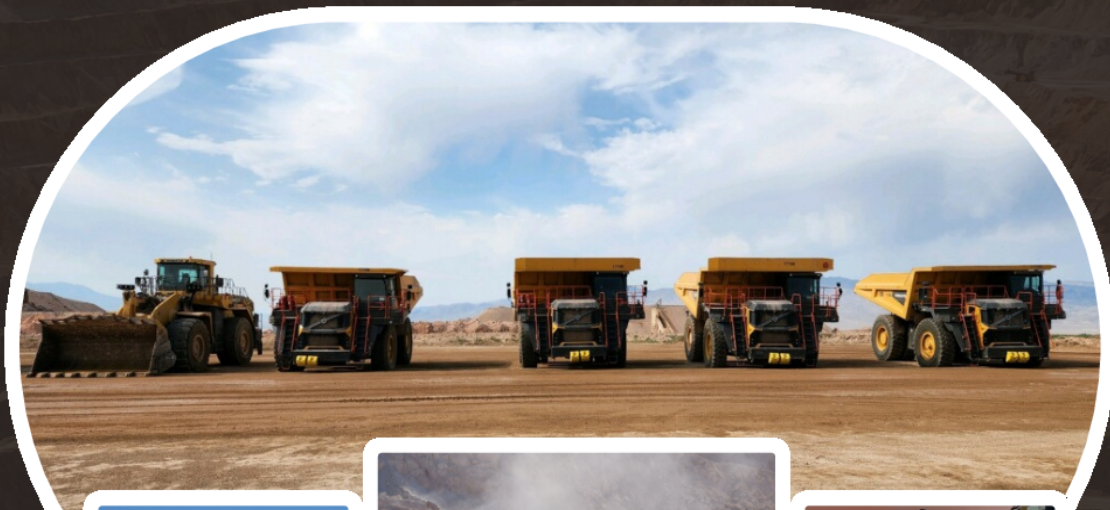
*To become a community partner please email [Tiffany@nccf.org](mailto:Tiffany@nccf.org).*



**RANGO**

# LIFTING YOUR BURDEN

SAFE | EFFICIENT | PRODUCTION



PROVIDING:

Mining / Mass Excavation

Leach Pad and Tailing Dam Construction

Reclamation

Managed Mine Services

Heavy Transport



Elko, NV  
775-738-6001

Mesa, AZ  
480-729-6537

Kermit, TX  
432-586-0188



[rangoinc.com](http://rangoinc.com)



*Rubies*  
**IGNITE** ✨  
& **INSPIRE**

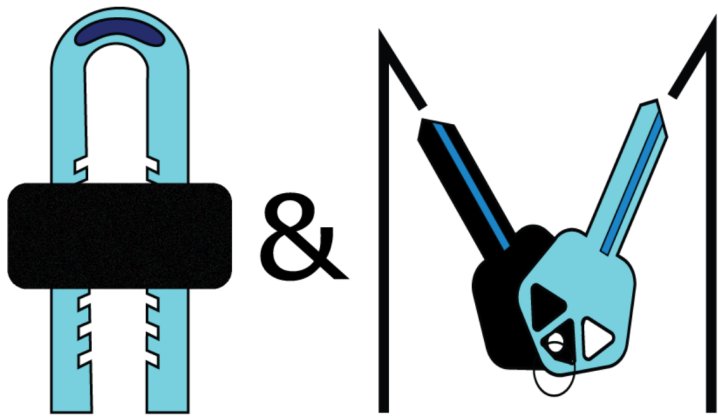
A MONTHLY EXPERIENCE FOR WOMEN  
PROFESSIONALS, CREATIVES & ENTREPRENEURS

**Designed for Connection. Built for Action.**

Join us for purpose-driven networking,  
transformative workshops, and powerful conversations  
in business, creativity, wellness, and leadership.  
Connect with intention, grow with confidence,  
and be inspired in a community of bold women  
where ideas ignite and action follows.

**Wednesday, April 8 | 5:30–7:00 PM**  
Rubies - 442 Idaho St, Elko

*Welcome Cocktail • Curated Charcuterie Board • Signature Gift*



# LOCKSMITH

*A Local Family Owned Company*



## Our Services

- High security key systems for commercial locks
- Residential Lock
- Commercial Lock
- ATV, OHV, RV, Motorcycle & Some Vehicles
- RV & Vehicle Lockout
  - Cut most RV keys by code
- Licensed & Bonded
- Cut all car key - including high security cuts
- Program Most Car Keys & Fobs (call for more information)



(775) 340-5429

Lic# NV20232693811

mike.richards8@icloud.com

Monday - Thursday

7AM - 5PM

Call for After Hours or  
Emergency Service



## BEING A MEMBER HAS IT'S PERKS



The Elko Daily Free Press is offering all new and current members of the Elko Area Chamber of Commerce a FREE 30 day advertising campaign! Included in campaign:

- **2 Quarter Page Ads** - Elko Daily Free Press Newspaper
- **30k Impressions** - Digital Banner Ads, elkodaily.com
- **1 Email Blast** - to 7,500 Local Newspaper Subscribers
- **1 Partner Post** - on Elko Daily's Facebook Page (23k followers)

**Total Value: \$1,200**

This opportunity is 100% free for new and current chamber members, our way of investing in your business and our community.



*For more information or to take advantage of this offer please contact:*

**775.748.2706 • [advertising@elkodaily.com](mailto:advertising@elkodaily.com)**



**Elko Daily** FREE PRESS

 **Amplified Digital**



**R.E.A.L.S.S.**  
TRAINING LLC  
Training Done Right

## Classes we offer

MSHA New Miner and Refresher 48.25 (b) (Surface only for now), CPR/First Aid, Harness Lanyard Annual Inspections, Fall Protection Training, Authorized and Competent Person Training, Confined Space, Lock-Out-Tag- Out-Try-Out, Emergency Response, Fire watch, TIA (Tire Industry Association) and a few other trainings. All classes are (OSHA/MSHA Compliant.)

Most safety training checks a box. We build real-world readiness. At R.E.A.L.S.S. Training, our name says it all:  
**Real Experience And Life Saving Skills.**

We deliver hands-on, scenario-based training designed for the moments that matter most—when pressure is high and decisions count. From OSHA compliance and Heat Illness Prevention to life-saving and emergency response skills, we go beyond the minimum to prepare people for reality. Because safety isn't theoretical.

And your people deserve more than "good enough."

**R.E.A.L.S.S. Training LLC, Training That Shows Up When It Matters.**

775-777-5359

[realstrainingllc.com](http://realstrainingllc.com)

[realstrainingllc@gmail.com](mailto:realstrainingllc@gmail.com)



# Hayley's

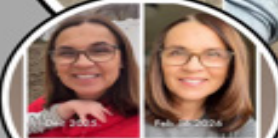


ONE MONTH

8-DAYS

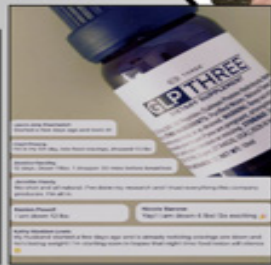


... 8 days ago I started taking GLP-THREE and I think my feet speak for itself.  
 Inflammation is one of the leading causes of Heart Attacks and Cancer.  
 This will be the most life-changing all-natural product you will ever use.  
 One week ago in Dallas, Texas, I was using a cane, and this week I don't need it.  
 All I can say is my GLP-THREE is going to change the world as we know it.



No more Diet Pepsi cravings  
 Less Inflammation in my face  
 -42 & lbs overall  
 -100 Solid 8 hours of

- Cellular communication and signaling
- Metabolic function
- Muscle preservation
- Healthy body composition
- Energy and stamina
- Blood sugar balance
- Mental clarity
- Mood balance
- Digestive comfort
- Reduced bloating
- Emotional eating support
- Appetite regulation
- Cravings control



## The future of GLP starts here Introducing **GLP-THREE** (NOT GLP-3. VERY DIFFERENT)



- ✓ LOSE WEIGHT
- ✓ FEEL GREAT
- ✓ **MBC-267** Patented peptides

Ingredients  
 320 mg of MBC peptides.  
 (salmon protein hydrolysate, mushrooms Saffron extract, Humulus lupulus extract (hops), purified water, Reb M, peppermint extract

**NO shots, NO drugs, NO side effects No perscriptions**

We make no medical claims  
 Ask about testimonies

*Open*

**MONDAY - FRIDAY 10 AM - 5:00 PM  
 SATURDAY 9:30 AM - 4 PM  
 386 5<sup>th</sup> Street, Downtown  
 Elko 775-778-9600**



# Premier Travel

## ◆ DESIGN ◆

Luxury Travel, Thoughtfully Designed



## *Elevate Your Travel Experience*

### What I Specialize In:

- Small-Ship & River Cruises
- Expedition Voyages & African Safaris
- Luxury Yacht Charters
- European Escapes
- Mexico, Hawaii & Bucket-List Travel
- Corporate Travel & Group Incentives

### Why Work With Me?

- Personalized, High Touch Planning
- Trusted Global Partnerships & VIP Access
- Seamless Coordination From Start to Finish

Schedule Your  
Complimentary  
30-Minute Call

Let's discuss your travel plans and how I can make them extraordinary!

*Cecilia Lawson*

Founder & Luxury Travel Advisor



[cecilia.lawson@premiertraveldesign.com](mailto:cecilia.lawson@premiertraveldesign.com)



[www.premiertraveldesign.com](http://www.premiertraveldesign.com)

Proud Member of the Elko Area Chamber



Jewels  
FLORAL STUDIO

NOW DELIVERING SPRING  
VIBES RIGHT TO YOUR DOOR!



Petats & Pages  
BOOK STORE

Our entire book collection  
is now available online!  
Visit [jewelsfloralstudio.com](http://jewelsfloralstudio.com)  
and click on the “books”  
tab to start shopping!

*Call or order online!*  
*336 Silver St. Elko NV, 89801*

[www.jewelsfloralstudio.com](http://www.jewelsfloralstudio.com)  
775.299.4366



# JO MAMA'S kitchen

Fresh,  
Made-to-Order,  
Homemade Goodness!

Our sandwiches, wraps, soups,  
salads and desserts:  
it's all made fresh!

Come on in or give us a call!  
267 Spring Creek Pkwy  
775-385-6797

We offer to go orders for when you're on the run.

Making a Difference in Rural Nevada



# POWER MOVES START HERE

Small Business Lending  
Commercial Funding  
SSBCI



## WHO WE ARE

**RURAL NEVADA'S NON-PROFIT  
LENDING PARTNER**

We help Rural Nevada access the funding, guidance, and resources they need to start, grow, and sustain their businesses.

## WHAT WE DO

**LOW-INTEREST BUSINESS  
LOANS. REAL IMPACT.**

We provide low-interest loans for startups, expansions, equipment, and working capital with flexible terms and fixed rates.



*"RNDC believed in our business when no one else would. Their loan helped us open our store front, hire local workers, and stay rooted right here in rural Nevada."*



- REAL STORIES, REAL SUCCESS

## WHERE WE SERVE

**15 RURAL NV COUNTIES**

We serve towns along the I-80 corridor and beyond, with targeted programs built for our region's unique challenges.

**LET US HELP**

**[RNDENV.ORG](http://RNDENV.ORG)**

**775.289.8519 x1105**

**[michellea@rndcnv.org](mailto:michellea@rndcnv.org)**

**1320 E Aultman St. | Ely, NV 89801**



**CAMERA OBSCURA SWERVEDRIVER IVY**  
**WHITE DENIM HOTLINE TNT**  
**WOODS FRANKIE ROSE**  
**DUMMY ISOBEL CAMPBELL TYLER RAMSEY**  
**GIFT PSYMON SPINE**  
**THE STEVENSON RANCH DAVIDIANS**  
**TALEEN KALI FONTEYN**  
**MYLO BYBEE LAPDOG**

**MAY 29-30, 2026 WELLS, NEVADA**

**DISCOUNTED TICKETS FOR  
ELKO COUNTY RESIDENTS**



**SCAN THE  
QR CODE  
FOR THE  
LOCALS  
ONLY  
DISCOUNT**

Endless Pawsibilities Foundation Presents

# Spring into Love...



Donate  
with  
Zeffy



zeffy

Donate  
with  
Venmo



Because Every Season is Better  
with a Furry Friend!

11<sup>TH</sup> APR 2026 | 10 AM - 2 PM

Join us at Petco  
in the Elko Junction Shopping Center

Endless Pawsibilities Foundation  
2193 Industrial Way, Elko, NV, USA  
Telephone: (775) 401-0110





# Rural Rocks. So does \$20,000!

**The Rural Rocks \$20K Homeownership Program helps rural Nevadans achieve homeownership with up to \$20,000 in assistance!**

## PROGRAM HIGHLIGHTS

- Assistance is paired with a fixed-rate, 30-year mortgage.
- Up to \$20,000 per borrower can be used in one of two ways:
  - Total amount toward down payment/closing costs, or
  - Down payment/closing costs paired with a permanent rate reduction
- No scheduled payments or interest accrued on assistance — forgiven after 30 years.
- At least one borrower must be an essential worker (Healthcare, Education, Public Safety, or Construction sectors) and at least one must have been a Nevada resident least 6 months or longer\*.
- No first-time homebuyer requirement.
- Household income limits apply by county.

\*Review list of approved occupations and residency requirements at [BuyRuralNV.org](http://BuyRuralNV.org).

**Learn more at [BuyRuralNV.org](http://BuyRuralNV.org).**



Nevada Rural Housing does not originate mortgage loans. Eligibility is determined by licensed lenders approved to offer the programs. Participating lenders are responsible to follow all program and loan agency guidelines. Loan rates vary based on program, loan type and amount of assistance provided. Not all applicants will qualify. MCC applicants should consult their own tax advisor or the IRS for questions regarding the MCC tax credit benefit. This is not an offer to lend money or solicit a mortgage application.



**HDI**  
High Desert Imaging

# Walk in Clinic

May 2, 2026

8am - 3pm

2110 Idaho Street, Elko NV 89801

Call staff with any questions 775-621-5800

No Appointment needed, First come first served

**\*No Referral Needed\***

Come take advantage of this one time special only for

**CT Low Dose Lung Screening and CT Calcium Score**

Special pricing for walk in clinic

CT LD Lung normally \$175, Saturday special **\$125**

CT Calcium Score normally \$150, Saturday special **\$100**





## What is Cardiac CT for Calcium Scoring?

Computed tomography, more commonly known as CT or CAT scan, is a diagnostic medical test that, like traditional x-ray, produces multiple images or pictures of the inside of the body.

CT images of internal organs, bones, soft tissue and blood vessels typically provide greater detail than traditional x-rays, particularly of soft tissue and blood vessels.

A cardiac CT scan for coronary calcium is a non-invasive way of obtaining information about the presence, location and extent of calcified plaque in the coronary arteries– the vessels that supply oxygen-containing blood to the heart muscle. Calcified plaque results when there is a build-up of fat and other substances under the inner layer of the artery. This material can calcify which signals the presence of atherosclerosis, a disease of the vessel wall, also called coronary artery disease (CAD). People with this disease have an increased risk for heart attacks. In addition, over time, progression of plaque build-up (CAD) can narrow the arteries or even close off blood flow to the heart. The result may be chest pain, sometimes called “angina,” or a heart attack.

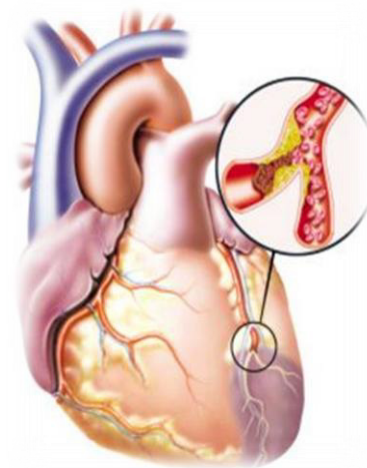
Because calcium is a marker of CAD, the amount of calcium detected on a cardiac CT scan is a helpful prognostic tool. The findings on cardiac CT are expressed as a calcium score. Another name for this test is coronary artery calcium scoring.

## What are some common uses of the procedure?

The goal of cardiac CT scan for calcium scoring is to determine if CAD is present and to what extent, even if there are no symptoms. It is a screening study that may be recommended by a physician for patients with risk factors for CAD but no clinical symptoms.

The major risk factors for CAD are:

- High blood cholesterol levels
- Family history of heart attacks
- Diabetes
- High blood pressure
- Cigarette smoking
- Overweight or obese
- Physical inactivity



## How should I prepare?

No special preparation is necessary in advance of a cardiac CT examination. You should continue to take your usual medications but you should avoid caffeine and smoking for four hours prior to the exam. You should wear comfortable, loose-fitting clothing to your exam. You may be asked to wear a gown.

**10 Minutes Could Save your Life... Schedule today 775-621-5800**



## What will I experience during and after the procedure?

This CT exam is painless, fast and easy. Coronary calcium scoring takes less than 30 minutes for the whole procedure start to finish. After you complete a brief personal and family health history you will have a non-invasive computed tomography (CT) scan of your heart and coronary arteries. The technologist will need to place electrocardiogram (ECG) leads on your chest so that the CT scanner can precisely measure the beating of your heart. This enables the scanner to take dozens of images during those fractions of a second between beats when your heart is still. Once completed, computer software enables our technologists to calculate a total calcium score. This numerical score is compared to gender and age specific patient databases to determine your percentile ranking.

After the exam, you can return to your normal activities.

## Who interprets the results and how do I get them?

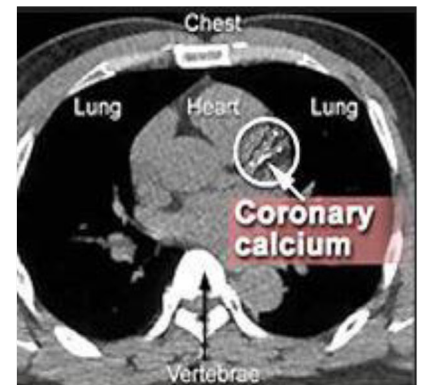
A radiologist with expertise in supervising and interpreting radiology examinations will analyze the images and create an official report. If self referred, the results will be available directly to you. If the exam was referred by your physician, the results will be sent directly to their office. Your physician will discuss the results with you.

A negative cardiac CT scan for calcium scoring shows no calcification within the coronary arteries. This suggests that CAD is absent or so minimal it cannot be seen by this technique. The chance of having a heart attack over the next two to five years is very low under these circumstances.

A positive test means that CAD is present, regardless of whether or not the patient is experiencing any symptoms. The amount of calcification—expressed as the calcium score—may help to predict the likelihood of a myocardial infarction (heart attack) in the coming years and helps your medical doctor or cardiologist decide whether the patient may need to take preventive medicine or undertake other measure such as diet and exercise to lower the risk for heart attack.

The extent of CAD is graded according to your calcium score:

| Calcium Score | Presence of CAD           |
|---------------|---------------------------|
| 0             | No evidence of CAD        |
| 1-10          | Minimal evidence of CAD   |
| 11-100        | Mild evidence of CAD      |
| 101-400       | Moderate evidence of CAD  |
| Over 400      | Extensive evidence of CAD |

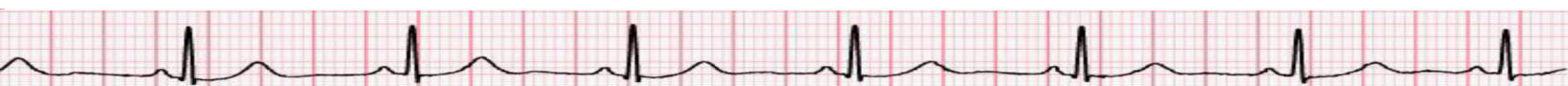


**Call to schedule your appointment today..... It just might save your life.**

## High Desert Imaging

2110 Idaho Street Elko, NV 89801

(775) 621-5800 Fax (775) 621-5801





Lung cancer screening is a process that's used to detect the presence of lung cancer in otherwise healthy people with a high risk of lung cancer.

## Why it's done

The goal of lung cancer screening is to detect lung cancer at a very early stage — when it's more likely to be cured. By the time lung cancer signs and symptoms develop, the cancer is usually too advanced for curative treatment. Studies show lung cancer screening reduces the risk of dying of lung cancer.

## Who should consider screening

Lung cancer screening is usually reserved for people with the greatest risk of lung cancer, including:

- **Older adults who are current or former smokers.** Lung cancer screening is generally offered to smokers and former smokers who are 50 and older.
- **People who have smoked heavily for many years.** You may consider lung cancer screening if you have a history of smoking for 20 pack years or longer. Pack years are calculated by multiplying the number of packs of cigarettes smoked a day and the number of years that you smoked.
  - For example, a person with 20 pack years of smoking history may have smoked a pack a day for 20 years, two packs a day for 10 years or half of a pack a day for 40 years. Even if your smoking habits changed over the years, your recollection about your smoking history can be used to determine whether lung cancer screening may be beneficial for you.
- **People who once smoked heavily but quit.** If you were a heavy smoker for a long time and you quit smoking in the last 15 years, you may consider lung cancer screening.
- **People in generally good health.** If you have serious health problems, you may be less likely to benefit from lung cancer screening and more likely to experience complications from follow-up tests. For this reason, lung cancer screening is offered to people who are in generally good health.
  - Screening is generally not recommended for those who have poor lung function or other serious conditions that would make surgery difficult. This might include people who need continuous supplemental oxygen, have experienced unexplained weight loss in the past year, have coughed up blood recently or have had a chest CT scan in the last year.

**People with other risk factors for lung cancer.** People who have other risk factors for lung cancer may include those with chronic obstructive pulmonary disease (COPD), those with a family history of lung cancer and those who have been exposed to asbestos at work.



## **Risks**

Lung cancer screening carries several risks, such as:

- **Being exposed to a low level of radiation.** The amount of radiation you're exposed to during an LDCT is much less than that of a standard CT scan. It's equal to about half the radiation you're exposed to naturally from the environment in a year.
- **Undergoing follow-up tests.** If your scan shows a suspicious spot in one of your lungs, you may need to undergo additional scans, which expose you to more radiation, or invasive tests.
- **Finding cancer that's too advanced to cure.** Advanced lung cancers, such as those that have spread, may not respond well to treatment, so finding these cancers on a lung cancer screening test might not improve or extend your life.
- **Finding cancer that may never hurt you.** Some lung cancers grow slowly and may never cause symptoms or harm. It's difficult to know which cancers will never grow to hurt you and which ones must be removed quickly to avoid harm. If you're diagnosed with lung cancer, your doctor will likely recommend treatment. Treatment for cancers that would have remained small and confined the rest of your life may not help you and may be unnecessary.

**Finding other health problems.** People who smoke for a long time have an increased risk of other health problems, including lung and heart conditions that may be detected on a lung CT scan. If your doctor finds another health problem, you may undergo further testing and, possibly, invasive treatments that wouldn't have been pursued if you hadn't had lung cancer screening.

## **After lung cancer screening**

When your LDCT scan is complete, you can go about your day normally.

The images created during the scan are compiled by a computer and reviewed by a doctor who specializes in diagnosing lung cancer with imaging tests (chest radiologist).

## **Results**

The results of your test will be ready within 24 hours of your exam. You can pick up your results from the front desk, you can also request that a copy be sent to your primary physician. HDI employees are not able to interpret your results for you. If you have concerns you will need to follow up with a physician.

**Get your Low Dose Lung Screening today**



**Gifts, tools, clothes,  
snacks, drinks, food—  
you name it, we've got it!**

**NEW  
OWNERS!**

**Open Monday to Friday from  
9 a.m. to 5 p.m.**



**Saturday from 9 a.m. to 3 p.m.  
215 S 11th Street**





# GET THE TEAM TOGETHER



Start planning for summer now.

While downtime is great, it is also a prime opportunity to get your board and membership together to lay a plan to move forward. It is also a great time to reach out to audiences old and new.

At Gavorsky Consulting, we work with rural non-profits, tribal organizations, and local governments to develop, promote, and manage projects with a constant emphasis on self-sustainability at the community level. Located in Elko, we bring over 10 years' experience collaborating with partners in rural northern Nevada and far beyond.

- Public Outreach and Roundtable Events
- Research Services and White Papers
- Strategic Plan Development
- Board Advisement and Training
- Cultural Program Development and Consultation
- Grant Identification, Writing, Management, and Reporting

GRANTS, OUTREACH, AND CULTURAL PROJECTS  
WHICH ARE SELF-SUSTAINING AT THE COMMUNITY LEVEL.



**CONTACT US FOR A FREE CONSULTATION TODAY**

**775.239.1089**

**[www.gavorsky.com](http://www.gavorsky.com)**

# JOIN OUR SKILLS TO START EVENT.

April 23, 2026 | 6-8 pm  
2405 Mountain City Hwy Elko, NV



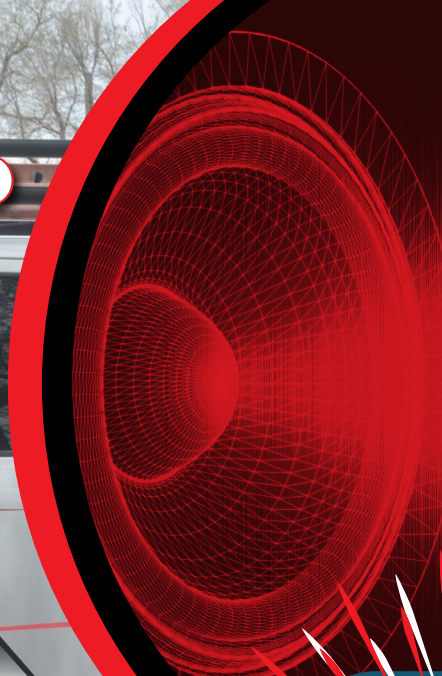
Take the first step in  
your career in the trades.  
Scan to learn more

**BUILD  
THE   
FUTURE**  
RED WING

# MAJOR LEAGUE AUDIO PROUDLY SERVES THE ELKO AREA



MAJOR LEAGUE  
AUDIO - VIDEO - SECURITY - SURVEILLANCE



## SHOP HERE

We Accept Chamber Checks



# 775.934.7875

To get a quote or discuss your project contact us now!

Monitor & control your Home & Business Systems from anywhere!

## PROFESSIONAL INSTALLATION IN YOUR HOME OR BUSINESS



Surveillance



Home Theater Audio



Security Systems



Custom Network



Television



Indoor & Outdoor Speakers



Outdoor Advertising Screens



# STOCKMEN'S *Casino*



## Golden Egg

*Free Play Drawings*

**FRIDAYS & SATURDAYS  
IN APRIL 6-9 PM**

Players must be actively playing with their Player's Choice card prior to start of the drawing, and have played \$20 carded coin-in.

## MONEY TOSS

Lob, toss, throw or *fling* your 3 money bags for CASH PRIZES!  
YOU COULD WIN UP TO \$200 CASH!  
EVERY FRIDAY IN APRIL • 6-9 PM

Players must be actively playing with their Player's Choice card prior to start of the drawing, and have played \$20 carded coin-in.

ALL YOU CAN EAT  
**EASTER  
BUFFET**  
**SUNDAY  
APRIL 5TH**

10:00 AM-3:00 PM  
ADULTS \$28.99  
10 AND UNDER \$16.99



ENJOY AN ARRAY  
OF DELICIOUS  
SAVORY AND SWEET  
DISHERS THAT MAKE  
THE STOCKMEN'S  
EASTER BUFFET  
A TREAT EVERY  
YEAR! BRING A  
BIG APPETITE!

Brand Room will be  
open with limited menu

**STOCKMEN'S  
SHOWROOM**



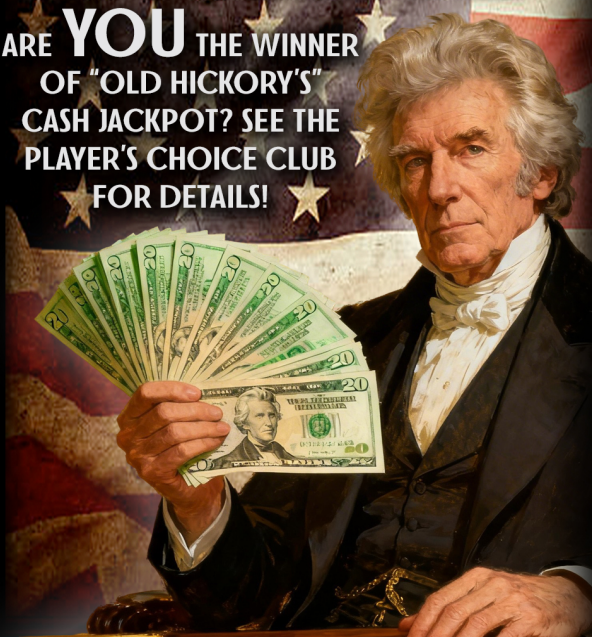
## BRAND ROOM

### APRIL DAILY SPECIALS

- |  |  |
|--|--|
| <b>MONDAY</b><br>MEATBALL SUB                                | <b>THURSDAY</b><br>CHICKEN                   |
| <b>TUESDAY</b><br>CHEDDAR<br>BACON & BROCCOLI<br>PASTA SALAD | <b>FRIDAY</b><br>FISH TACOS                  |
| <b>WEDNESDAY</b><br>PANCETTA<br>RIGATONI PASTA               | <b>SATURDAY</b><br>JALAPENO<br>POPPER BURGER |
|  | <b>SUNDAY</b><br>BEEF TIPS<br>OVER NOODLES   |

## ACTION JACKSON

ARE YOU THE WINNER  
OF "OLD HICKORY'S"  
CASH JACKPOT? SEE THE  
PLAYER'S CHOICE CLUB  
FOR DETAILS!



340 Commercial Street • Elko NV 775-738-5141 • [stockmenscasinoelko.com](http://stockmenscasinoelko.com)