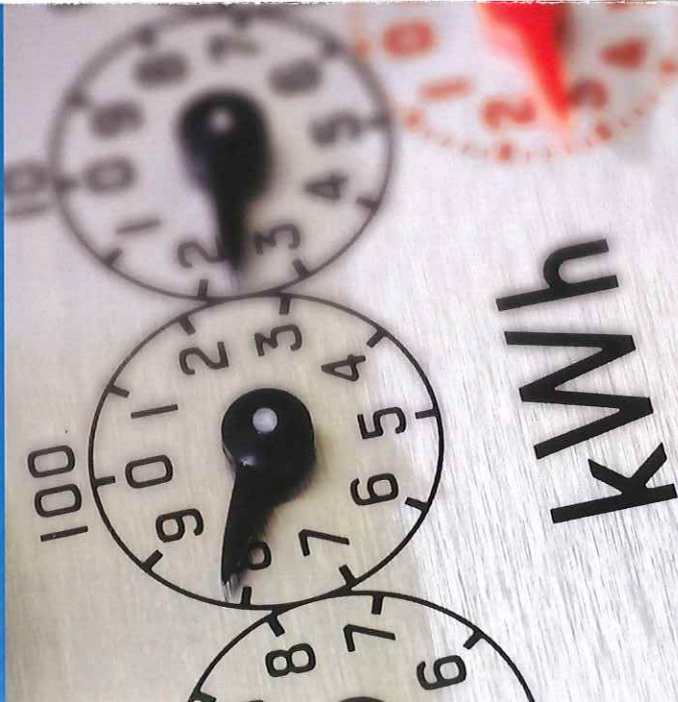


Who we are.

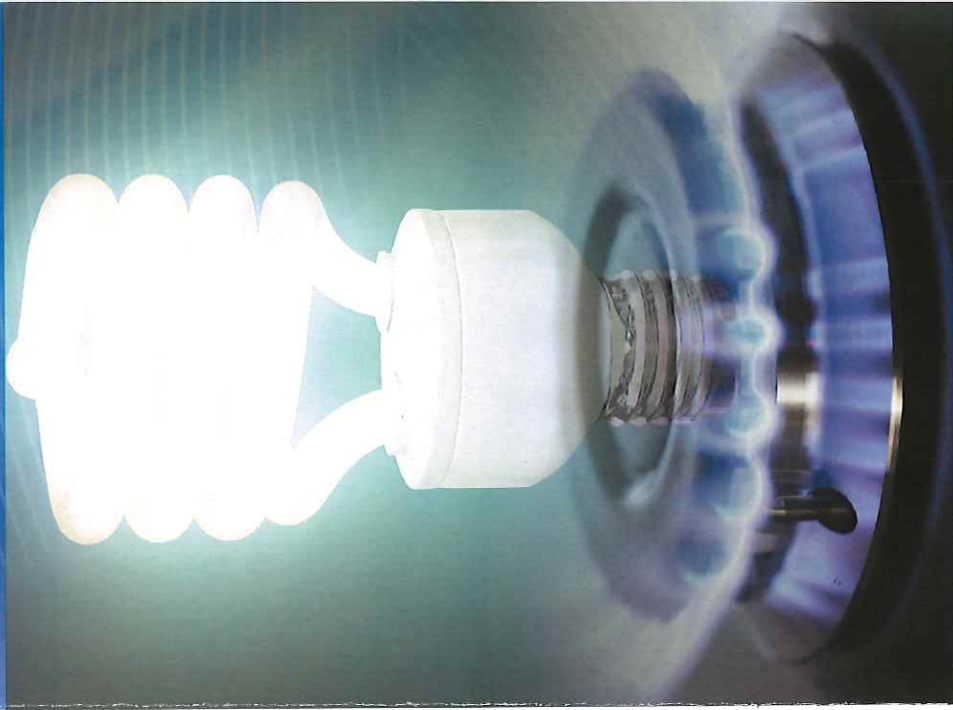
Chamber Energy Solutions is an energy program for Chambers of Commerce to provide electricity and natural gas savings to their members.

CES is professionally managed by Palmer Energy Company, an unbiased independent energy consultant (not a broker). CES has expertise in the procurement (buying, selling and transporting) of natural gas and electricity, and in contracting for interstate pipeline capacity and local utility delivery.

CES has a designated team of consultants and analysts to take care of your specific energy needs.



Chamber Energy Solutions



Your energy expert, dedicated to lowering your utility costs.



Our Partners:



5577 Airport Highway, Suite 101

Toledo, Ohio 43615

p 419.539.9180

f 419.539.9185

www.palmerenergy.com

Control rising energy costs.

CES Natural Gas Program



This program helps manage your natural gas costs by bringing local businesses together. CES helps control your natural gas costs by applying its market knowledge and negotiation expertise, reducing your prices and helping you buy your natural gas when the pricing is advantageous. This strategy provides insurance against dramatic price increases in the natural gas market.

What natural gas utilities are included in the CES Program?

Businesses with facilities located in Columbia Gas, Dominion, Duke and Vectren service territories can participate in this program.

CES Electric Savings Program



The CES Electric Savings Program saves you money on your electric consumption through the application of its pricing expertise. Working with so many customers allows CES to get its customers some of the lowest prices in the market. Current CES members participating in the program have secured savings off the current generation/"price to compare" rate for secondary voltage customers.

What factors affect the electric rate that I pay?

There are several components in your electric supply rate (energy costs, capacity rates, ancillary charges and taxes/fees). Current EPA regulations have caused the shutdown of some coal generation facilities, therefore we are seeing an increase in both the capacity and energy components of your rate. Electric rates are greatly dependent upon the natural gas market. As demand for electricity and natural gas increases, this will likely cause rates to increase. While natural gas supply is abundant, it is vulnerable to weather, economic and other unpredictable factors.

What electric utilities are included in the CES Program?

Businesses with facilities located in FirstEnergy (Toledo Edison, Ohio Edison and Cleveland Illuminating Company), AEP (Columbus Southern Power & Ohio Power), Dayton Power & Light and Duke Service territories can participate in the electric program.

CES General Program Questions

What if I am in contract with a supplier. Can I still join?

As soon as your current contract has expired, you can start buying your gas through the CES Program. Don't wait – many contracts require a 60- to 90-day notice of termination.

How do I enroll in the CES Program?

Please send a copy of a recent bill to your Chamber Representative or to your Palmer Consultant. We will assess your current usage and advise you on the next steps.

For additional program information:

Visit your local Chamber's website or go to palmerenergy.com.

