



Insights

It is the mission of the Irwindale Chamber of Commerce to build solid relationships, provide quality services that support chamber members and businesses in order to promote the economic vitality of our community.

Volume 27, Number 01

January 2007

CORNERSTONES of Irwindale Commerce



Legislative Forum to Feature Assemblyman Ed Hernandez

Assemblyman Hernandez will be the featured speaker at the Irwindale Chamber Legislative Business Affairs Forum sponsored by The Gas Company on Friday, January 12, 2007, 8:00 a.m.-10:00 a.m. at the Irwindale Community Center. Make your reservation today by calling the chamber at 626-960-6606

Assemblyman Ed Hernandez represents the 57th Assembly District. The district includes the cities of Azusa, Baldwin Park, Covina, La Puente and West Covina.

Assemblyman Hernandez's legislative priority is working toward providing health insurance for the uninsured in California.

A native of La Puente, Assemblyman Hernandez attended local schools and graduated from Bassett High School. An optometrist by training, Hernandez has donated his time and professional skills to the community by providing free eye care to low-income children and working with the local schools to examine the eyes of thousands of school children. He also has given free care to at-risk diabetic patients.

Hernandez is married to Diane, also an optometrist, and they have two daughters. The Hernandez family resides in the city of West Covina.

New 2007 Labor Law Posters



Upcoming State Minimum Wage Increase Means Employers Need New Posters in 2007

In order to help California businesses maintain compliance following the recent law increasing the minimum wage in California, the California Chamber of Commerce has made updated 2007 employment posters available for pre-order on its website.

The increase in California's minimum wage, from the current \$6.75 per hour to \$7.50 per hour in 2007 and \$8 per hour in 2008, was signed into law by Governor Arnold Schwarzenegger in September. The increase means that all California employers and businesses will be required to update their employment posters by January 1, 2007, when the first wage hike goes into effect.

Don't Risk Non-Compliance

"Changing laws and regulations can put your business at risk for non-compliance," said CalChamber President Allan Zaremborg.

★ ★ ★ ★ ★ ★ ★ ★ ★ ★ ★ ★ ★ ★ ★ ★
★ **HR ROUNDTABLE** ★
★ **Labor Law Update** ★
★ **Wednesday, January 17** ★
★ **@ Irwindale Community Center** ★
★ **11:30 a.m.-1:30 p.m.** ★
★ **Brown Bag Lunch** ★
★ ★ ★ ★ ★ ★ ★ ★ ★ ★ ★ ★ ★ ★ ★ ★

Inside this issue:

Calendar	3
Member News	4-8
Green Pages	9-12
Irwindale Rocks!	14-16
Labor Law	18
Seminars/Workshops	18
Chamber/City Information	19

Phone: (626) 960-6606
Fax: (626) 960-3868

www.irwindalechamber.org



It's our town.



We live *here*.
We work *here*.
We contribute *here*:



*time,
money,
resources...*



To build *bridges to jobs through support for education.*


To encourage *diversity in our business and this community.*

To enrich *the community through support of the arts.*

To reach out *to the disadvantaged, the hungry and those in need.*



It's the right thing to do.
It's our town, too.

Live Responsibly 

Miller Brewing Company, Milwaukee, WI



Calendar of Events

January 2007

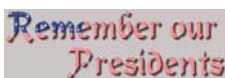
For last year's words belong to last year's language, and next year's words await another voice. And to make an end is to make a beginning. -T.S. Eliott-



1	HAPPY NEW YEAR	Chamber Closed	
3	Environmental Committee	Noon	Chamber Office
4	Business Development Committee	7:30 a.m.	Chamber Office
9	Irwindale Education Foundation	7:30 a.m.	Chamber Office
9	Ambassador Meeting	8:00 a.m.	Vineyard Bank
11	Let's Do Lunch	11:30 a.m.-1:30 p.m.	Edison CTAC
	State of the Chamber-Presenting Sponsor: Picasso's Cafe		
12	Legislative Forum	8:00 a.m.-10:00 a.m.	Community Center
	Speaker: Assemblyman Ed Hernandez		
17	HR Roundtable	11:30 a.m.-1:30 p.m.	Community Center
19	Installation and Award Dinner	6:00 p.m.	Pomona Valley
	Presenting Sponsor: Vulcan Materials Mining Company		
22	Board of Directors Meeting	3:00 p.m.	Chamber Office
24	Multi-Chamber Mixer	5:00 p.m.-7:00 p.m.	Ranchero Mexican Restaurant
25	GMI Breakfast-Mini Expo	7:30 a.m.-9:00 a.m.	Picasso's Cafe
	Presenting Sponsor: Picasso's Cafe		

February 2007

This country will not be a good place for any of us to live in unless we make it a good place for all of us to live in. -Theodore Roosevelt-



1	Business Development Committee	7:30 a.m.	Picasso's Cafe
1	Ribbon Cutting/Grand Opening	5:00 p.m.-7:00 p.m.	Duarte Family Chiropractic
6	Ambassador Meeting	8:00 a.m.	Chamber Office
7	Environmental Committee	Noon	Chamber Office
13	Irwindale Education Foundation	7:30 a.m.	Chamber Office
15	Let's Do Lunch	11:00 a.m.-1:30 p.m.	Edison CTAC
	Energy Forum- Presenting Sponsor: Southern California Edison		
22	GMI Breakfast	7:30 a.m.-9:00 a.m.	Picasso's Cafe
	Presenting Sponsor: Picasso's Cafe		
26	Board of Directors Meeting	3:00 p.m.	Chamber Office

March 2007

If a man who cannot count finds a four-leaf clover, is he lucky? -Stanislaw J. Lec-



1	Business Development Committee	7:30 a.m.	Picasso's Cafe
6	Ambassador Meeting	8:00 a.m.	Chamber Office
7	Environmental Committee	Noon	Chamber Office
8	Let's Do Lunch	11:30 a.m.-1:30 p.m.	Edison CTAC
	State of the City-Presenting Sponsor: Picasso's Cafe		
13	Irwindale Education Foundation	7:30 a.m.	Chamber Office
22	GMI Breakfast-Mini Expo	7:30 a.m.-9:00 a.m.	Picasso's Cafe
	Presenting Sponsor: Picasso's Cafe		
26	Board of Directors Meeting	3:00 p.m.	Chamber Office

Robert W. Morgan
Certified Public Accountant

(562) 431-2292 3561 HOWARD AVENUE
(626) 814-2811 SUITE 203
Fax: (562) 431-2763 LOS ALAMITOS, CA 90720

Rock
Sand
Gravel
Ballast
Rip Rap
Recycled



Hanson
Hanson Aggregates
Los Angeles
Sales / Administration
13550 Live Oak Avenue
Irwindale, CA 91706
Tel 626-856-6700
Fax 626-962-4420



Everything but Ordinary.SM

Kim Travanty
Assistant Vice President, Customer Service Manager
Irwindale Banking Center
16008 Foothill Blvd.
(626) 208-3203
www.vineyardbank.com



Accurate Alloys Inc.
Perforated and Expanded Metals

5455 North Azusa Avenue
Irwindale, California 91706

(626) 338-4012
(323) 231-4179
FAX (626) 337-8393
www.accuratealloys.com

Kirk Osborne



UNITED ROCK PRODUCTS

1245 E. Arrow Hwy
Irwindale CA 91706

(626) 358-4558
FAX (626) 357-9508

24 HR. ROAD SERVICE



(626) 914-1841 • (626) 335-2368 • (909) 596-9060
 134 N. Valencia FAX (626) 914-9008 1045 W. Kirkwall
 Glendora, CA 91741-2477 Azusa, CA 91702



Carolyn Anderson

626-960-7551 Fax: 626-969-4971
www.wm.com



Rancho Duarte Florists
 Gene & Rosi Medrano

2143 E. Huntington Drive • Duarte, CA 91010
 (626) 357-5325 • (800) 231-7730 • Fax (626) 357-9085
www.rdflorest.com



Securitas Security Services USA, Inc.
 4981 Irwindale Ave, Suite 900
 Irwindale CA 91706

626-480-5000



EL POLLO LOCO Catering Services
 Serving LA, Orange & San Diego Counties

1-866-303-2020 Call Now!
 Lunch, Dinner, Parties & Corporate Events
www.weproudlycater.com

621 N. Azusa Ave.
 (626) 339-7337

106 S. Grand Ave.
 (626) 967-6450

Member News



Carpet Experts has been in business since 1990. We are a small family run business with high expectation not only for ourselves, but to our customers as well.

Carpet Experts is committed to provide the best quality flooring for our customers at a fair price without cutting corners. We believe in the superior installation of our flooring and the best in craftsmanship.

We carry a full line of beautiful long lasting Shaw Carpets, Tile, Laminates in many colors and styles. We also have a full line of commercial carpet and in door and out door carpet. If we don't have it we can get it. We have super styles and color of Domco Vinyl, Pergo Laminate, BHK wood and laminate.

We are located in Irwindale, at 16244 Arrow Hwy, between Irwindale Ave. and Vincent. Our phone is (626) 960-1515. Pictured above (L-R), Lisa Bailey, Irwindale Chamber; Cid De La Fuente, Carpet Experts; and Kevin McDonald, Foothill Transit.



Ajilon is a global leader in managed services, consulting and specialized recruiting with nearly 500 offices in 17 territories throughout the world including North America, the United Kingdom and Continental Europe. The company provides solutions in the following specialty areas: information technology, engineering, finance and accounting, legal, office support, and sales and marketing. Ajilon is part of the Adecco Group - the largest human resource services company in the world. Pictured above (L-R), Lisa Bailey, Irwindale Chamber; Looyi Heng, Ajilon; and Vee Clark, SCE Federal Credit Union.

Member News



Everybody Loves Bingo!

At the November Monthly Luncheon members were asked to exchange business cards and use the newly acquired cards to fill out a bingo card – hence, the name of the game Business Card

Bingo! A fun time was had by all!

Congratulations to Atisthan Roach (pictured above) winner of the black out game.

Many thanks to all who donated prizes: Allstate Insurance, American Reclamation, Artemis Concepts, Boy Scouts of America, City of Hope, Enthusiast, Inc., Foothill Transit, Jan’s Towing, La Luz Candles-Calwax, Miller Brewing, Pegasus Building Services, Picasso’s Café, Bakery & Catering, Ready Pac Produce, Sanctuary Shack, SCE Federal Credit Union, and Vineyard Bank.

Good Morning Irwindale (GMI)

Mini Expo participants at the November GMI included SCE Federal Credit Union, Jan’s Towing, A. J. Longo & Associates, and Enthusiasts, Inc. Each were given an opportunity to present their services and/or products to a group of 34 attendees at the breakfast which was sponsored by Picasso’s Café, Bakery & Catering in Irwindale, and hosted by the Irwindale Chamber.

At the December GMI, Irwindale Chamber President & CEO Lisa Bailey reported the results of the Chamber Survey taken by members in October. The purpose of the survey was to rate the existing programs and services that the chamber provides as well as the importance of each benefit.

The results showed that the current programs and services are useful to our members. One member added that they were “...impressed with the innovative ideas such as HR Roundtable and business interest subjects that you provide seminars and training for.” Another member suggested a Chamber Night at the Speedway, and another was looking for more business-to-business relationships.

Participants in the survey were entered into a drawing for a free one-year chamber membership. Congratulations to Karl Hoff, Candywarehouse.com winner of the free one-year chamber membership.

Thank you to the following businesses for their continued support and for donating door prizes at the November and December GMI Breakfast: Aloette Cosmetics, Boy Scouts of America, Calwax, Candywarehouse.com, Duarte Family Chiropractic, Enthusiast, Inc., Helping Heroes, Jan’s Towing, Pegasus Building Services, Picasso’s Café, Bakery & Catering, Rancho Duarte Florist, Renaissance Pleasure Faire, and Sanctuary Shack.

HARRISON NICHOLS
HN
SINCE 1924

www.HarrisonNichols.com
(800) 451-6054 Fax: (626) 338-1610

FRESHPOINT
Southern California

Verne Lusby
President

The Fresh Produce Specialist

5301 Rivergrade Rd. Irwindale, CA 91706
800-252-9168 626-962-4435 (Fax)

AvoDerm
the skin and coat solution®

For a retailer near you visit
www.breeders-choice.com
or call (800) 255-4286

ITCH RELIEF

I learned to take

Foothill Transit

Thousands of people throughout the region count on Foothill Transit to get them where they need to go. And with the rise in fuel costs, more and more people are discovering the benefits of taking Foothill Transit.

As a community partner, we salute the City of Irwindale for its continuing commitment to the San Gabriel Valley.

1-800-RIDE-INFO www.foothilltransit.org

**Incredible benefits
for your employees at
no cost to you!**



3810 Durbin Street
Irwindale, CA 91706
(626) 960-6888
(800) 866-6474
(626) 646-2349 Fax
info@scefcu.org

www.scefcu.org

Have your advertising
delivered to the
right people on time!

ColorMe
INC.

The Complete Graphics, Printing & Direct Mail Company

Call and see what we can do
for your business!

1-877-72COLOR

5462 Diaz Street • Irwindale, CA 91706
626-337-7755 • Fax: 626-337-7775

NASCAR
IRWINDALE SPEEDWAY



**GET YOUR
EVENT ON THE
FAST TRACK!**

- Luxury Sky Box Suites for Parties of up to 30 Guests!
- Party on the Roof with up to 100 Guests!
- Tented Chalet Village for up to 750 Guests Plus
Public Display Areas!

Call Julie Owen, ext. 212:

www.irwindalespeedway.com **(626) 358-1100**

(Labor Law Posters-continued from coverage)

On January 1, 2007, California employers must do more than pay an increased minimum wage — they must display new employment posters in the workplace, as well. CalBizCentral already has prepared the required posters and compliance kits and is making them available at www.calbizcentral.com.

“Providing compliance products and advice is another way CalChamber helps California business do business,” Zaremborg said.

Impact on Exempt Employees

The increase also may affect exempt executive, administrative and professional employees whose minimum salary requirements are tied to the California minimum wage.

The minimum salary test for these employees will increase from the current \$2,340 per month to \$2,600 per month (\$31,200 per year), on January 1, 2007, and to \$2,773.33 per month (\$33,280 per year) effective January 1, 2008.

Because of the wide-ranging impact of the new California minimum wage on businesses, the CalChamber suggests that employers review the earnings of employees at the lower rungs of their wage and salary scales and consider how “wage compression” may affect other employees in their organization.

If this and other employment laws are confusing, businesses can register for CalBizCentral’s free *HR California Extra* newsletter to help them stay up to date on current issues and trends.

Order the 2007 California and Federal Employment Required Postings on one 28” x 53” Poster – Chamber members save 20% off retail prices. Contact the chamber to place your order.

Attention: Business Owners, Executives and Human Resources Professionals

Human Resources Roundtable

Brought to you by the



and presented by
Robert Bekken,
Law Firm of
Musick, Peeler & Garrett

Sponsored by



A J LONGO & ASSOCIATES
INSURANCE BROKERS

**Wednesday,
January 17, 2007**

FREE

Labor Law Update

Learn what critical changes may impact your business

Location:

**Irwindale Community Center
16102 Arrow Highway
Irwindale, CA 91706**

Registration: 11:30 a.m.

Program: noon to 1:30 p.m.

Bring your own brown-bag lunch

*Please R.S.V.P. to ensure that enough
handouts are available*

626-960-6606

Fourth Quarter Renewals

Thank you to the following members who have invested in the Irwindale Chamber of Commerce once again. We value your membership and look forward to a continuing relationship.



A.J. Longo & Associates
 ADP
 Accurate Alloys Inc
 Alfa Limousine Services
 All American Asphalt
 Am-Vets Post 113
 American Grandstand Seating
 Antifreeze Envir. Serv. Corp.
 Artemis Concepts
 Ashwill Associates
 BEPC Limited
 Big J Auto Wrecking
 Bonneville Steel, Inc
 CandyWarehouse.com
 City Of Hope
 Colliers Seeley International
 Color Me
 Craftsman Concrete Cutting
 Crystal Clear Images
 Dave's Auto Truck Dismantling
 Davis Wire Corporation
 Decore-Active Specialties Inc.
 East San Gabriel Valley ROP
 Foothill Medical Center
 Fresh Point Of Southern California
 Gentry Brothers, Inc.
 Grubb & Ellis
 Hanson Spancrete Pacific Inc
 Hilton Garden Inn
 ISU Insurance Services-Calgard Assoc.
 Irwindale Auto & Truck

Irwindale Speedway
 J.C.P.E. Enterprises
 Jackson & Blanc
 Knights of Columbus
 Law Office of Susan K. Holliday
 Maraman & Associates
 Mariscos Uruapan
 Medo Company
 Metro Gold Line Foothill Ext.
 Montage Press
 Monty's Electric
 Neighborhood Homework House
 PSA Printing & Mailing Services Inc
 PTX Industries Inc.
 Pacific Western Bank
 Pegasus Building Services
 Pepsi Bottling Group
 Pinnacle Building Maintenance
 Quiznos Sub -Anaya Corporation
 R R & M Truck Parking
 Reichhold, Inc.
 Royal Coaches Auto Body & Towing
 San Gabriel Mts Regional Conservanc
 Sanitary Supplies LLC
 Scholastic Book Fairs
 Security Systems R.V. Storage
 Select Office Solutions
 Shwoo
 Stars Cleaners & Flowers
 Tandex Test Labs
 Toastmasters Club #9811-F
 Trammell Crow Company
 United Transportation Union
 Western Paving
 Westin Automotive Corporation
 Y2 Marketing

New Members 4th Quarter

Ajilon
 Angel City Multimedia
 Asian Ceramics
 Azusa Recruiting Station
 Diversified Transportation
 Eagle Photography
 Enthusiast, Inc.
 First Innovative Financial Group, Inc
 Leven Oaks
 Northview High School Band Boosters
 Partee Insurance Associates, Inc.
 The Classics Two

Welcome new members. We look forward to your participation.



BRISTOL HOME LOANS

A Division of Bristol Financial Group, Inc.



CAROL HIDALGO
Sr. Loan Consultant

1270 E. Garvey St., Suite 240
 Covina, CA 91724
 Tel: (626) 967-8483, Ext. 113
 Fax: (626) 339-5708
 E-mail: carolh@bristolhomeloans.com

Roger a
are prou
at 4981
graphic

(626) 338-4377

FAX (626) 338-1134



President
FRANK J. HERNANDEZ

Arizona • California • Nevada
 ecmpeco@worldnet.att.net
 WWW.ECMPECO.COM

5454 Diaz St.
 Irwindale, CA 91706

REICHOLD

A DIC GROUP COMPANY

Thomas W. Rascop
 Environmental, Health and Safety Manager
 Operations

237 S. Motor Avenue
 Azusa, CA 91702-3228 USA

Direct: 626-334-4974 Ext. 115
 Cell: 626-241-7060
 thomas.rascop@reichhold.com



Creatively connecting knowledge and application.

remember US

for financial solutions to your challenges in 2006!

We are in business to meet the unique banking needs of small to medium size businesses. You can always expect:

- Fast decisions by empowered bankers
- Competitive pricing
- Unparalleled service



IRWINDALE REGIONAL OFFICE
(626) 815.0875

15622 Arrow Highway - Irwindale, CA 91706



www.1stcent.com
 Stock Symbol: FCEN



Bianca Vobecky
Account Executive
Phone: 626-818-7402
Rates: 800-686-3871

**IF IT'S TOO BIG FOR UPS
IT'S THE PERFECT SIZE FOR US!**

E-mail: bianca@dtstone.com

ROYAL COACHES AUTO BODY & TOWING



OFFICIAL POLICE GARAGE

Bill Salazar • 626.960.1824 • Fax 626.960.7041

14827 Ramona Blvd., Baldwin Park, CA 91706

"We Care About Our Community"
"DON'T DRIVE-DRUNK"

FREE lift Home...For YOU And Your Car.
NO QUESTION! NO CHARGE!

Service in BALDWIN PARK, WEST COVINA AND IRWINDALE



Davis Wire Corporation

P.O. Box 2145
Irwindale, CA 91706-1097
5555 N. Irwindale Ave.
Irwindale, CA 91706-2070

Phone (626) 969-7651
Fax (626) 334-4780

FREE Government Contracting Courses and Seminars

In our **FREE** training seminars you will learn techniques to tap into the profitable federal, state, and local government markets. Our instructors have extensive experience in government contracting and are familiar with the latest contracting laws and regulations.

Register online at www.TheFTC.org or call **866.382.7822** toll-free.

Southern California January 2007

January 10 - 9:00 am to 12:00 pm

Getting Started with Government Contracting
Lakewood Chamber of Commerce
4010 Watson Plaza Drive, Suite 130
Lakewood, CA 90712

January 18 - 9:00 am to 12:00 pm

Introduction to Federal Contracting
El Camino College Small Business
Development Center (SBDC)
13430 Hawthorne Boulevard
Hawthorne, CA 90250

January 24 - 8:00 am to 11:00 am

Radio Frequency Identification (RFID) for DoD Suppliers
Santa Ana Chamber of Commerce
2020 North Broadway, 2nd Floor
Santa Ana, CA 92706

January 30 - 9:00 am to 12:00 pm

Getting Started with Government Contracting
Valley Economic Development Center (VEDC)
5121 Van Nuys Boulevard, Third Floor
Van Nuys, CA 91403

Monogram the Call

By: Nancy Friedman, The Telephone Doctor

Think of all the items you use that have your initials or even your name on it. And have you ever given a gift and had a name or initials put on it? Most likely you have. Certainly, you've seen monograms on a variety of items. And, we know that many catalog companies encourage us to put a monogram on an item.

So, what does that have to do with customer service in your organization? Glad you asked. Has this ever happened to you? You're in the grocery store pushing the cart to the checkout stand. The checker appears to do a good job, scanning your things. She (or he) tells you the total - \$115. (The old I just went in for butter, milk and eggs.) You pull out the checkbook, make the check out for \$115 exactly, hand over the check, and; NOTHING. Oh, wait. Something did happen. The bagger asked you if you would like paper or plastic.

What didn't happen here was no one MONOGRAMMED or used your name during the event. You gave the checker your check - WITH YOUR NAME ON IT (address & phone number too) and she still didn't monogram the event. She didn't use your name. She had it - but didn't use it. Had you given her cash, you might have been more understanding. (We seldom, if ever, put our name on cash.) Yes, you gave her your name; and she didn't use it!

Know the name? Use the name! It's that simple. When you're lucky enough to be given the customer's name, please use it. It makes the entire transaction a little friendlier, a little easier to handle and it shows you care.

The difference is very apparent. I was in line to board a plane the other day and the person taking the tickets used the name of every single passenger. And yes, with a big smile. Because it's done so rarely, it made a big impression on me. Hey, I gave her my name; and by golly, she used it.

On the telephone, you won't get handed anything with a name on it, but chances are you'll have every opportunity to get a name and then use the name. You'll be able to 'monogram' the call.

Listening skills come into play here as evidenced by something that happened to me recently. I made a phone call, introduced myself and the reason for the call, and the next thing out of the person's mouth was: "NAME?" I told him, it was still "Nancy." I hadn't changed it from 7 seconds before.

So the question becomes, "What do we do when someone gives us a name and we miss it?" Good question! And Telephone Doctor has a great technique for getting that name you missed. It's easy. Someone gives you their name and then continues on with the conversation. Unless you've written it down, you've probably forgotten it. So we take control of the call and say, "I know you said your name, and I apologize, I missed it. My name is Nancy. And you are?" What we've done here is take responsibility of the situation. And we covered the objection ahead of time. Admitting they said their name and yet we did miss it. It's a crowd pleaser; let me tell you.

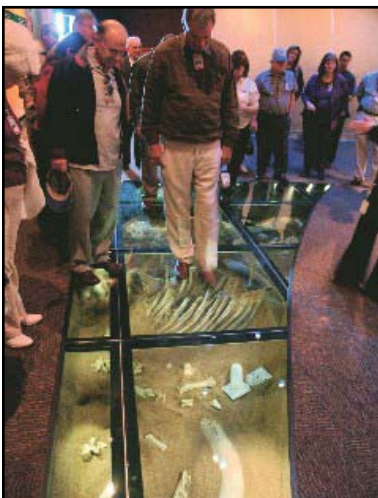
The Green Pages

January 2007
Diamond Valley Lake Tour



Metropolitan Water District sponsors periodic tours of its facilities to educate and inform business leaders about the complicated measures needed to ensure a reliable, safe drinking water supply. Members of the Chamber's Environmental Committee recently were invited to join with the Industry Manufacturers Council to visit Diamond Valley Lake, tour the pump station, dams and museums.

Built in the saddle of two mountains, Diamond Valley Lake, Southern California's newest and largest reservoir, is a vital link in the regional system that's brought water to Southern California for the past 60 years. The lake nearly doubled the area's surface water storage capacity and provides additional water supplies for drought, peak summer and emergency needs. The lake, located in Hemet, California is first and foremost a lifeline for Southern California in times of drought. The lake holds enough water to meet the area's emergency and drought needs for six months and is an important component in Metropolitan's plan to provide a reliable supply of water to 18 million people in Southern California.



Diamond Valley Lake features a museum complex consisting of two distinctly different subjects. The Center for Water Education, which weaves the story of water from its importance to Southern California to its impact worldwide, past, present and future. The Western Center for Archaeology & Paleontology is designed

to provide world-class facilities for the research, curation, and presentation of the nearly 1,000,000 specimens discovered during the development of the Diamond Valley Lake.

People from kindergarten students to world leaders, will learn about, discuss and advance water issues as well have an unparalleled opportunity to interact with and to understand the magnificent creatures and resourceful people who inhabited the Diamond and Domenigoni valleys from its distant Ice Age past through today. Presentations to the community are held regularly to inform and students of all ages are invited to the state-of-the-art learning facilities.

Hiking trails, fishing and boating are available. Stringent rules apply to water activities to keep the water supply unpolluted. Go to www.dvlake.com details.

Diamond Valley Lake Facts

Water Sources:

- Colorado River Aqueduct delivered through San Diego Canal
- California State Water Project from Lake Silverwook pumped or fed by gravity through the Inland Feeder and San Diego Canal

Facts & Features:

- 810,000 acre-feet* or nearly 264 billion gallons capacity
- Area: 4,500 surface acres; 4.5 miles long, more than 2 miles wide; 150 to 250 feet deep
- Dam construction began September 1995, completed December 1999
- Don Owen Dam: Earth/rock-fill-construction, 280 feet high, 1.9 miles long
- East Dam: Earth/rock-fill-construction, 180 feet high, 2.2 miles long
- Began pumping water into DVL, Nov. 8, 1999



(Water Tour-continued on page 12)

COLD-WEATHER TIPS FOR SAVING ENERGY, MONEY

Submitted By: Bob Cruz, The Gas Company

With the approaching winter, Southern California Gas Co. (The Gas Company) officials are offering a number of tips for staying warm and energy efficient at the same time:

“Home heating and water heating make up about 85 percent of winter natural gas use,” said Michelle Mueller, vice president of customer services for The Gas Company. “The best way to reduce winter gas bills is to conserve energy.”

- When using the home furnace, lower the thermostat 3 degrees to 5 degrees (health permitting) and turn it off when not at home. This can help save up to 20 percent on heating costs.
- Up to 40 percent of a home’s heat loss takes place due to inadequate attic and wall insulation. Upgrade insulation to save up to 25 percent on heating costs.
- Have air ducts tested for leaks. Seal any leaks and save up to 20 percent on winter heating costs.
- Check the furnace filter monthly and clean or replace it, per manufacturer’s recommendations, to save up to 2 percent on heating costs.
- Caulk and weather-strip drafty doors and windows to save up to 5 percent on heating costs.
- Use an extra blanket and turn down the furnace thermostat at night as the weather turns cooler.
- Use cold or cool water when washing clothes to save up to 10 percent on hot-water costs.
- Run the dishwasher only when full.

The Gas Company offers rebates on qualified high-efficiency natural gas furnaces, water heaters, attic and wall insulation and other home-improvement items. Energy-efficiency program information and applications are available at www.socalgas.com/energyefficiency.

Mueller said customers should be aware that unpredictable severe cold weather in the United States can boost natural gas demand and prices and, consequently, customer bills.

Residential customers of The Gas Company can expect the average winter monthly bill for 75 therms of natural gas to be about \$80 to \$85, as compared with \$98 last winter. Apartment dwellers will see an average monthly gas bill for 30 therms of natural gas of about \$35, as compared with \$40, and small businesses that use 300 therms of natural gas per month, will see an average monthly gas bill of about \$325 to \$345, as compared with \$407 last winter.

For eligible customers with limited income, The Gas Company offers a 20-percent rate discount on monthly gas bills through the California Alternate Rates for Energy (CARE) program and free energy-saving home improvements, including repair or replacement of qualifying home furnaces, through the Direct Assistance Program (DAP).

For more information on conservation and simple home improvement tips, as well as energy-efficiency rebates and assistance programs, customers should visit The Gas Company’s Web site at www.socalgas.com, or call The Gas Company toll-free at (800) 427-2200.

The Gas Company is the nation’s largest natural gas distribution utility, providing safe and reliable energy to 19.8 million consumers through 5.6 million meters. The company’s service territory encompasses approximately 20,000 square miles in most of central and Southern California. The Gas Company strives to provide exceptional customer service to enhance the quality of life in the community. The Gas Company is a regulated subsidiary of Sempra Energy (NYSE: SRE). Sempra Energy, based in San Diego, is a Fortune 500 energy services holding company.

The Irwindale Chamber of Commerce Environmental Committee

E-mail your environmental questions to our committee and one of our committee members will respond to you.

Chair: Celia Smith- **Pegasus Building Services**
 Robert Barnes- **Irwindale Police Department**
 Sol Benudiz - **Irwindale Police Department**
 Ann Croissant- **San Gabriel Mountain Conservancy**
 Craig Doerr- **American Reclamation**
 Jayne Foote- **Veolia ES Technical Solutions**
 Raymond Hamada- **City of Irwindale**
 April Kelcy- **Earthquake SOLUTIONS**
 Deborah Lindberg- **Biosense Webster, Incorporated**
 Thomas Rascop- **Reichhold, Inc.**
 Patricia Sullivan- **City of Irwindale Public Library**
 Racine Ward- **Biosense Webster, Incorporated**
 Lisa Bailey- **Irwindale Chamber of Commerce**
 Dominique Yates- **Irwindale Chamber of Commerce**

E-mail: EnviroCommittee@irwindalechamber.org

Mission Statement

To prepare, inform and advocate, on behalf of the business and residential community, environmental concerns and emergency preparation and response planning.

Join the Committee

If you care about health and safety issues that affect community business, or the environment, you should consider this committee.

Meeting: 1st Wednesday of each month

Time: 12:00 noon to 1:00 p.m.

Location: Irwindale Chamber of Commerce,
16102 Arrow Highway, Irwindale
(one block east of Irwindale avenue)

Website: www.EnviroCommittee.com



HEARTBEAT FOR IRWINDALE ©

Irwindale Chamber of Commerce

The Irwindale Chamber of Commerce Environmental Committee and the Legislative Business Affairs Committee is pleased to present...

ENERGY: THE PULSE OF BUSINESS

Presenting Sponsor:



An EDISON INTERNATIONAL[®] Company

Community Sponsors include:



A Sempra Energy utility™



This event will address the serious energy issues facing us today as well as what businesses can do to ensure reliable and affordable energy in the future.

Representatives from Southern California Edison, the Gas Company, Metropolitan Water District, and the California Energy Commission have been invited to speak on:

Infrastructure * Energy Efficiency & Conservation * Future Energy Challenges

Mark your calendar today and join us for lunch on:

Thursday, February 15, 2007

11:00 a.m. to 1:30 p.m.

\$20.00 Chamber Members / \$25.00 Non-Chamber Members

Edison CTAC 6090 N Irwindale Ave, Irwindale

Tours of Edison CTAC will be offered from 1:30 p.m. to 2:00 p.m.

For information and/or reservations, please contact the Irwindale Chamber office at (626) 960-6606.

Thousands of Southland Homes, Businesses Get Smart About Landscape Irrigation

By: Metropolitan Water District of Southern California

Metropolitan, local water agencies wrap up successful pilot program introducing cutting-edge sprinkler controller that significantly reduces water use

Thousands of residents and business owners in Southern California are saving almost 1 million gallons of water a day, under a unique pilot program to introduce the latest outdoor water-saving technology.

Metropolitan Water District and the Family of So. Ca. Water Agencies have upgraded more than 5,000 homes and businesses in six Southland counties over the past two years to water-saving, "smart" sprinkler controllers, a technological quantum leap from the traditional landscape timer.

Instead of watering according to a preset schedule, smart controllers gather information on changing weather conditions and time of year before automatically adjusting watering schedules to meet outdoor landscape needs.

The majority of these smart controller upgrades were made possible through a \$1.8 million Proposition 13 grant from the California Department of Water Resources.

"We're encouraged by the success Metropolitan and its member agencies are experiencing with smart controllers," said Dave Todd, DWR land and water use program manager. "They've been able to overcome implementation obstacles using a good adaptive management approach.

"We're looking forward to reviewing their final program results and hope their successful strategies can help other agencies," Todd added.

Introduced three years ago, smart controllers adapt and enhance a technology employed by sophisticated landscape maintenance professionals on golf courses, parks and other large landscapes for homeowner and commercial use.

"These controllers take the guesswork out of figuring out a lawn watering schedule," said Andy Hui, manager of Metropolitan's regional water efficiency programs. "These state-of-the-art devices monitor your garden's or landscape's environmental conditions and water your plants, accordingly.

One study showed water savings of up to 40 gallons per household per day, or about 10 percent of total water use."

Since installing his smart controller a few months ago, Glendora homeowner Doug Loukota has seen noticeably less run-off from his landscapes.

"Since I installed and programmed it myself, I haven't had to pay a lot of attention to it. It just does its thing figuring out how much water the shrubs and grass need," Loukota said.

John Rossi, general manager of the Western Municipal Water District, said more than 600 weather-based irrigation controllers have been distributed in Western's 510-square-mile service area in southwest Riverside County.

"Those controllers will save nearly 3,500 acre-feet of water or enough water for 7,000 families. Conservation programs such as these are important elements of our water supply mix," Rossi said. Overall, rebates were offered by agencies in Los Angeles, Orange, Riverside, San Bernardino, San Diego and Ventura counties.

The smart controller swap and rebate program is part of a regional effort to heighten awareness of smart controllers and other new water-saving devices rebated by Metropolitan and its member agencies.

.....
(Water Tour-continued from page 9)

- Dedication, March 18, 2000
- Marina opened, Oct. 3, 2003

* An acre-foot equals 325,851 gallons; serves the annual needs of two typical Southern California families

Resource Management:

- Six-month emergency supply affords protection against water shortages caused by earthquakes or drought
- Operational flexibility, provides water by gravity flow to most of MWD service area
- Provides water quality benefits by allowing MWD to blend State Water Project and Colorado River supplies
- Provides storage of wet-year surplus water when source water quality is higher
- Can take water from the SWP when supplies are available and environmental effects are minimal
- Allows water, stored when plentiful, to be slowly released, helping improve the region's groundwater recharge programs
- Provides up to 26 megawatts of hydroelectric generation

Environmental:

- Creates the 13,000-acre Southwest Riverside County Multispecies Reserve that includes land around the reservoir, Lake Skinner and the 2,500-acre Dr. Roy E. Shipley Reserve



We Deliver Preferred Solutions
107 South Motor Avenue
Azusa, Ca 91702

Phone: (800) 395-6726
Fax: (626) 334-4563

How Are You Handling The Stress In Your Life

Submitted By: Duarte Family Chiropractic

These days, the war is on TV, in the newspaper, on the cover of magazines, and heard on the radio. No longer is it just a video game or action packed movie, what we are seeing is all for real. No matter what you are doing these past several weeks, we can't seem to escape the war and it's even harder to shield our children from it. How are you handling it?

Along with the war, we all have bills to pay, traffic to drive in, and obligations to fulfill. These unpleasant or challenging situations create stress in our lives, and these demands on our time and money can take a huge toll on our health. How can stress affect your health?

What Happens When You Face Stress? First, your body quickly prepares itself for confrontation with the "fight or flight" response. Messages stream from your brain to your endocrine (hormonal) system and chemicals are released. If the stress stops, you revert to normal. This happens all under the control of the nervous system. If the stress continues, you go into the stage of resistance. Your body tries to adapt to the stress, and you continue to "fight or flight" (run from) the threat. As you do, you tense your muscles, your immune system becomes suppressed, and fatigue sets in. If the stress still continues, you may pass into the stage of exhaustion. Your system falls prey to anxiety, ill health and chronic dis-ease. Just like a chain tends to break at its weakest link, people seem to exhibit stress and strain in the weakest areas of their bodies. For some, it's an upset stomach. For others, it's recurring headaches, neck and shoulder pain, fatigue, muscle stiffness or a suppressed immune system. Regardless of your particular response, the function of your nervous system is involved. That is why chiropractic care can be so helpful.

The chiropractic approach to stress is to help normalize the function of your nervous system by removing interferences caused by the Vertebral Subluxation Complex. Chiropractors find the "weak links" in your spine (the spine protects the nervous system) and make corrections to the spine to help improve function. This can make a positive difference in your response to stress. It may not be possible to remove the stress from a busy life. However, with the help of a Chiropractor, people often respond better to the unique challenges they face on a daily basis. Like a relaxing vacation, chiropractic care can help give your nervous system a greater capacity to adapt to stress. Every person deals with stress differently, but an interesting study in *The Journal of Manipulative and Physiological Therapeutics* (July/August 1999) indicates that there is a relationship between chiropractic and the effect it can have on dealing with stress situations in your life.

This study revealed that nearly one in three chiropractic patients viewed their lives as moderately to severely stressful, and more than 50% felt that stress had a moderate to severe impact on their health problems. Additionally, 71% of the patients indicated that it would be helpful if their Chiropractor offered advice to help them cope with these stressful situations.

Communicating with your Chiropractor about dealing with stress is the starting point, and you might be surprised to find that your Chiropractor is full of sound advice on ways to effectively deal with stress in your life. Most people know that improving nerve and spinal function has a dramatic impact on improving emotional, mental and physical function. Getting the most out of your chiropractic care may include talking to your Chiropractor about effective strategies to deal with the stress in your life, so be sure to inform your Chiropractor about your personal situation so he or she can help you improve your health and wellness at maximum levels.



Great Wall, Great Opportunities

The Chamber hosted its third China Trip in November 2006. Twenty-one people traveled with us to Beijing, Xian and Shanghai. "What a terrific opportunity!" Vee Clark, 2006 Chair of the Board stated, "climbing the Great Wall, visiting the terra cotta warriors as well as seeing so many other historical sights was simply amazing". In addition to sight seeing business travelers had the option to attend a business conference in Shanghai. For information on the next tour contact the Chamber office.

IRWINDALE ROCKS

(Previously the City Corner)

As Provided by City Staff



Congratulations to all who received awards. We greatly appreciate your hard work and commitment to our City. Many thanks for all you do.



Mayor Ortiz and Bruce Flanders

On behalf of the City Council, Mayor Ortiz presented a Certificate of Recognition to Bruce Flanders, the announcer at the Irwindale Speedway, for achieving the extraordinary milestone of having the 5 millionth race fan hear his voice. Throughout his 30 years plus career of announcing, he has become known as motor sports most prolific announcer. The Certificate was presented to him on Thanksgiving night at the Irwindale Speedway. Pictured is Mayor Ortiz and sports announcer Bruce Flanders.

IRWINDALE ROCKS

(Previously the City Corner)

As Provided by City Staff



Left- 40-Year Service Recognition

Douglas Roberts, Reserve Officer, received recognition for his 40 years of service to the City. Pictured from left are Councilman Breceda, Douglas Roberts, Mayor Pro Tem Fuentes, Brad Baxter, City Manager, and Mayor Ortiz.

Right- 30-Year Service Recognition

Paul Tapia, Street Maintenance/Equipment Operator, received recognition for his 30 years of service to the City. Pictured from left are Councilman Breceda, Paul Tapia, Mayor Pro Tem Fuentes, Brad Baxter, City Manager, and Mayor Ortiz.



Left-25-Year Service Recognition

Grace Cox, Communications and Records Coordinator, and David Chico, General Maintenance, received recognition for their 25 years of service to the City. Pictured are from left, Councilman Breceda, Grace Cox, David Chico, Brad Baxter, City Manager (back), Mayor Ortiz and Mayor Pro Tem Fuentes.

IRWINDALE ROCKS

(Previously the City Corner)

As Provided by City Staff



Left-10 Year Service Recognition

Maxine Nunez, our Financial Management Assistant, received recognition for her 10 years of service at the City's annual holiday luncheon and employee service award presentation. Pictured with Maxine are from left, Councilman Breceda, Mayor Pro Tem Fuentes, City Manager Brad Baxter, and Mayor Ortiz. Not pictured is Jeffrey Spangler, Reserve Officer. Also not pictured is Officer George Natzel, who received recognition for his 15 years of service to the City.

Right-20-Year Service Recognition

Camille Diaz, Assistant City Manager and Esther Tapia, Recreation Aide, received recognition for their 20 years of service to the City. Pictured from left are Councilman Breceda, Camille Diaz, Esther Tapia, Brad Baxter, City Manager, Mayor Ortiz and Mayor Pro Tem Fuentes. Not pictured is Robert Lopez who also has worked for the City for 20 years.



Left-Five Year Service Recognition

The City of Irwindale held their annual holiday luncheon and employee service award presentation, on Thursday, December 7, 2006. There was great food, great gifts and best of all, having fun with fellow co-workers. At the luncheon, several employees were honored for their years of service. Eleven of our employees received recognition for five years of service. Pictured are from left Councilman Breceda, Matthew Tapia, Assistant Pool Manager; Juan Castro, Lifeguard; Mayor Pro Tem Fuentes (back); Rebecca Orosco, Library Aide, Melissa Marez,

Library Aide; Loretta Corpis, Management Analyst; Claudia Gallardo, Receptionist Clerk; Priscilla Zepeda, Recreation Supervisor; Brad Baxter, City Manager; and Mayor Ortiz. Not pictured are Joe Nunez Jr., Senior Lifeguard; Gabriel Marez, Recreation Aide; Armando Hegdahl, Records Technician; and Kwok Tam, Public Works Director/City Engineer.

Healthy Resolutions

Submitted By: Duarte Family Chiropractic

- Get moving. Regular doses of moderate physical activity - including walking, jogging, aerobics or dancing keep the flame burning brighter.
- Take a tea break. Tea's healing power comes from antioxidants work to help neutralize free radicals.
- Smile. Like the chicken or the egg, are you smiling because you are happy or happy because you are smiling.
- Eat fish. Omega 3 fatty acids increase the viscosity of platelets preventing clumping and clotting.
- Eat breakfast. A morning meal boosts your metabolic rate and stabilizes your appetite.
- Take a nap. Just 10 minute in the day to relax, rest, revive, meditate, to regain your focus.
- Make rice the staple and meat the side dish.
- Jot down your words, goals, accomplishments.
- Stop smoking.



Have a Save & Happy New Year

**BUILDING BRIDGES
AND KEEPING YOU CONNECTED...**

EVERY DAY.



*Congratulations on
25 years of service to Irwindale
and its neighbors!*

PASADENA STAR-NEWS
pasadenastar-news.com

SAN
GABRIEL
TRIBUNE
sgvtribune.com

WHITTIER DAILY NEWS
whittierdailynews.com

1-800-788-1200

VISIT EDISON CTAC



CUSTOMER TECHNOLOGY APPLICATION CENTER

Offering FREE Informative Seminars in Lighting, HVAC, and Electrical Training!

Technology Update *♦

Thursday, January 18, 2007 #15820
8:30am – 4:00pm with lunch

Introduction to Lighting (formerly Basic Lighting for Commercial & Industrial Facilities) *

Thursday, January 18, 2007 #16510
8:30am – 12:00pm



Power Quality Fundamentals

Thursday, January 18, 2007 #16549
8:30am – 4:00pm with lunch

Basic Heating, Ventilation & Air Conditioning (HVAC) *

Friday, January 19, 2007 #15916
8:30am – Noon

Fundamentals of Electricity and Energy Efficiency *♦

Friday, January 19, 2007 #16550
8:30am – 4:30pm with lunch

Call **1-800-336-CTAC** or visit our web site at:

www.sce.com/energycenters

6090 N. Irwindale Ave., Irwindale, CA 91702

*These programs are funded by California utility customers and administered by Southern California Edison under the auspices of the California Public Utilities Commission.

♦ These classes are jointly offered by California Energy Centers operated by CTAC (Southern California Edison Company), the Energy Resource Center (Southern California Gas Company, a Sempra Energy Utility), the Pacific Energy Center (Pacific Gas and Electric Company) and San Diego Gas & Electric, a Sempra Energy Utility.

 **EDISON
CTAC**
SOUTHERN CALIFORNIA EDISON®

Company Policy, Employee Status Determine Need for Holiday Pay

By: Cal Chamber

If a non-exempt employee is required to work on a company holiday, what rate should he or she earn for working that day — time-and-one-half or double-time?

Neither state nor federal law requires the payment of premium pay for working on a national, state or company-recognized holiday. The only exception is public works prevailing rate jobs.

Double Pay: If your policy is to pay for certain holidays, an employee called upon to work on one of those days would receive holiday pay as well as be paid for all hours worked that day. In effect, this employee has been paid two times for the hours worked, but not at premium pay.

An option available in lieu of paying for the holiday in question is to grant another day off with pay. This policy should be set in advance, preferably in your employee handbook.

Overtime: The California Industrial Welfare Commission wage orders require the payment of premium pay based upon *hours worked*. You are not required to include holidays in your calculation of overtime.

For example, if Monday is a paid holiday in which the entire company is shut down, production will now require work through Saturday. Employees are required to be paid for 8 hours holiday pay (based upon your policy) and for 40 hours of work. Although they are being paid for more than 40 hours in the week, no overtime is due because these employees did

not work more than 8 hours on any one day nor over 40 hours in the workweek.

Exempt Employees: Exempt employees are treated differently than those who are non-exempt. To maintain exempt status, a position must meet certain compensation requirements enforced by both the State Labor Commissioner and the U.S. Department of Labor.

A common question is whether a company can have a policy denying holiday pay to exempt employees who have less than 90 days of service. Applying such a rule to exempt employees can endanger their exempt status. Exempt employees are entitled to be paid for any day they otherwise make themselves available for work.

For example, a company is closed Monday and Tuesday for the Christmas holiday, an exempt employee has worked there for one month and the employer's policy is that one must be employed 90 days to receive holiday pay. For the purpose of maintaining exempt status, this employee who worked Wednesday through Friday is entitled to salary for the full week.

Holiday Payday: What happens when payday falls on a non-business day, such as Saturday, Sunday or a legally recognized holiday when you are closed? Paydays falling on a Sunday or legal holiday can be pushed to the following business day. Companies closed on a Saturday are required to pay employees on the preceding business day.

Some Things are Too Toxic To Trash!

Free Household Hazardous & E-Waste Roundup

February 10, 2007

9:00 a.m. – 3:00 p.m.

City of Claremont - 1616 Monte Vista Ave.

Household Hazardous Waste includes paints, glues, pesticides, oils, solvents, cleansers, old medicine, and car and dry-cell batteries.

E-Waste includes computer monitors, TV's, VCRs, stereos, fax machines, computer keyboards and cellular telephones.

Improper disposal of these materials can pollute the environment and endanger children and pets.

- Limit of 15 gallons or 125 lbs. per vehicle
- Don't mix materials, keep original labels on containers
- Put in a sturdy box in the trunk of your car
- No waste from business will be accepted
- No explosives, ammunition or radioactive materials will be accepted

For more information, call the L.A. County Hotline at

1 (888) CLEAN LA-(1-888-253-2652)

Small Business Consulting

- The SBDC is an economic development project of the U.S. Small Business Administration and the California Community Colleges, operating as a full service business assistance center. The SBDC services include one-on-one business counseling, loan application assistance, business development seminars, and onsite consulting.
- Please call the SBDC at 800-450-7232 to schedule your consultation, or to register for an upcoming workshop.

Upcoming Workshops

Marketing Your Business

Wednesday, January 10, 2007

5:30 p.m. -7:30 p.m.

@ Irwindale Community Center

16102 Arrow Hwy

Irwindale, CA 91706

Small Business Loans

Wednesday, February 7, 2007

5:30 p.m. -7:30 p.m.

@ Irwindale Community Center

16102 Arrow Hwy

Irwindale, CA 91706

IRWINDALE CHAMBER OF COMMERCE

Street Address: 16102 E. Arrow Highway, Irwindale, CA 91706
Mailing Address: P.O. Box 2307, Irwindale, CA 91706-1168
Phone: (626)960-6606 • Fax:(626) 960-3868
E-Mail: info@irwindalechamber.org
Website: www.irwindalechamber.org

2007 BOARD OF DIRECTORS

Chair of the Board: Kevin McDonald *Foothill Transit*
1st Vice Chair: Marissa Buckisch *Picasso's Cafe*Bakery*Catering*
2nd Vice Chair: Dennis Chiappetta *Athens Services*
Treasurer: Robert Weil *Calwax Corporation*
Secretary: Atisthan Roach *Vulcan Materials*
Past Chair: Vee Clark *SCE Federal Credit Union*

Directors: Vance Baugham *SGV Economic Partnership*
Bob Cruz *The Gas Company*
John Gasparian *American Reclamation*
Anita Hernandez *Miller Brewing Company*
Sam Kim *Ayutla Meat Market*
Rachel Leyba *Allstate Insurance*
John Muldoon *Securitas Security Services*
Jesus Rodriguez *Decore-Ative Specialties*
Mark Rodriguez *Ready-Pac Produce*
Kim Travanty *Vineyard Bank*

Directors: Brad Baxter *City Manager*
Ex-officio: Lisa Bailey *President/CEO*
Staff: Dominique Yates *Membership Event Manager*
Veronica Orosco *Administrative Assistant*

CHAMBER MEETINGS

Ambassadors 1st Tuesday
8:00 a.m. at the Chamber
Board of Directors 4th Monday
3:00 p.m. at the Chamber
Environmental Committee 1st Wednesday
12:00 noon at the Chamber
Luncheons 2nd Thursday
Location Varies
Business Development 1st Thursday at Picasso's Cafe
7:30 a.m.
Networking Breakfast 4th Thursday at Picasso's Cafe
7:30 a.m. - 9:00 a.m.
Toastmasters Every Wednesday at Irwindale Community
7:15 a.m. (Visitors always welcome!)

IRWINDALE SERVICE ORGANIZATIONS

Am-Vets Post 113
16124 Calle de Paseo, Irwindale, CA 91806
Meets 1st Friday at Am-Vets Park (626) 338-4440 Ben Aguayo
Irwindale Educational Foundation
P.O. Box 2307, Irwindale, CA 91706-1168
Board Meets 2nd Tuesday, 7:30 a.m. at the Chamber
Irwindale Lions Club
P.O. Box 2093, Irwindale, CA 91706
Meets Tuesdays, 11:45 a.m. at Covina Bowl
Irwindale-Salvatierra, GTO, Mexico Sister City Corporation
P.O. Box 2054, Irwindale, CA 91706
Meets 2nd Tuesday, City Council Chambers at 7:00 p.m.
Knights of Columbus
16025 E. Cypress Ave., Irwindale, CA 91706
Meets 2nd Wednesday, 8:00 p.m., at the Knights of Columbus Hall
Sociedad Progresista Mexicana, Inc.
(626) 337-1193 Antonio Salazar
Meets once a month (usually Tuesday), City Council Chambers
V.F.W. Irwindale Post 9895
P.O. Box 2054, Irwindale, CA 91706
Meets 3rd Thursday at 4117 Alderson Street, Baldwin Park, CA

City of Irwindale

City Hall
5050 Irwindale Avenue
Irwindale, CA 91706-1168

Phone: (626) 430-2200
Fax: (626) 962-4209 (City Hall)
Fax: (626) 962-2018 (Building Dept.)
Website: www.ci.irwindale.ca.us
e-mail: postoffice@ci.irwindale.ca.us

City Council
Mayor: H. Manuel Ortiz
Mayor Pro Tem: David Fuentes
Council Members: Mark A. Breceda,
Suzanne Gomez, and Julian A. Miranda

City Council Meetings
2nd and 4th Wednesday, 6:30 p.m. at City Hall

City Staff
City Manager: Brad Baxter
Assistant City Manager: Camille Diaz
Dir. of Public Works/City Engineer: Kwok Tam
Finance Director & City Treasurer: Abraham De Dios
Director of Planning: Raymond Hamada
Human Resource Manager: Sharmeen Bhojani
Economic Development Manager: Elaine Cullen
Deputy City Clerk: Linda Kimbro

Planning Commission
Chair: Larry Burrola Vice Chair:Richard Chico
Commissioners: Robert E. Hartman and Arthur R Tapia

Parks & Recreation Commission
Chair: Dan Diaz Vice Chair: Belen Zepeda
Commissioners: Erlinda Duran, Paula Fraijo,
and Carol Hernandez

Senior Citizen Commission
Chair: David Martinez Vice Chair: Maggie Guzman
Commissioners: Stella Breceda,
Nellie Tapia and Patricia Trippy

Library.....(626) 430-2229
City Librarian: Pat Sullivan
5050 Irwindale Avenue Fax: (626) 430-2266
Recreation.....(626) 430-2224
16053 Calle de Paseo Fax: (626) 962-3022
Recreation Manager: Dan Grijalva
Recreation Supervisor: Carol Acosta
Recreation Supervisor: Priscilla Zepeda

Senior Center.....(626) 430-2283
16116 Arrow Highway Fax: (626) 430-2275
Senior Citizen Coordinator: Jackie Delgado
Assistant To Senior Citizen Coordinator: Sara Ponce

Service Yard.....(626) 430-2280
16034 Calle del Norte
Public Works Manager: Mike Rados

Police Department
Chief Sol Benudiz
Emergency..... 9-1-1
Phone (non emergency)...(626) 430-2244
5050 Irwindale Avenue Fax: (626) 856-0471


Los Angeles County Fire- Irwindale Station
Emergency..... 9-1-1
Phone (non emergency)...(626) 337-8919
15546 Arrow Hwy, Irwindale




AMERICAN RECLAMATION

(626) 798 ★ 1901

For Waste Collection & Recycling Services Contact • Craig Doerr or Joe Pimentel



Lunch is just a bowl away...



Try a fresh and delicious READY PAC® Bistro to Go™ salad today!

Corporate Headquarters
4401 Foxdale Avenue, Irwindale, CA 91706
ph: 626-856-8686 fax: 626-856-0088
www.readypac.com

"Everything you can imagine is real"
- Pablo Picasso



Casual, Yet Upscale Ambiance
Top Quality & Affordable Indulgences
Offering Culinary Graduate Talents & Expertise
First Class & Consistent Service

Innovative, Familiar, & Fresh California Cuisine
Always Serving the Latest in Culinary Trends & Tastes
Complimentary Wireless & DSL Technology Always Available

Irwindale's first, premier, & only gourmet restaurant and leading catering company serving the community and surrounding counties since 1989.

"Celebrating 15 Years of Culinary Excellence"

Picasso's
café • bakery • catering
"Where Great Food is a Work of Art"

Cafe Hours: M-F, 7:00am-2:30pm
Reservations Accepted Via Phone & Website
Private Dining, Conference & Banquet Rooms Available

6070 N. Irwindale, Suite A-D
Irwindale, CA 91706
626-969-6100 · f: 626-969-8700
www.picassoscafe.com

Casual Catering & Customized Full Service Catering
Catering Available 24/7 for Corporate or Personal Events Worldwide



Athens Services
Waste Collection • Recycling • Transfer • Disposal • Street Sweeping

Brenda Reuter
Sales Manager

14048 Valley Blvd.
P.O. Box 60009
City of Industry, CA 91716-0009
BRreuter@AthensServices.com

(626)336-3636
Direct Line (626) 934-4667
Cell: (626) 705-6953
Fax (626) 369-4754



PRESORTED
STANDARD
U.S. POSTAGE
PAID
PERMIT NO. 288
COVINA, CA

P.O. BOX 2307 • IRWINDALE, CALIFORNIA 91706

"Jardin de Roca" Garden of Rocks

Is this newsletter properly addressed? Please verify the information on the mailing label. If any changes are needed please call (626) 960-6606 or fax them to (626) 960-3868.

It is the mission of the Irwindale Chamber of Commerce to build solid relationships, provide quality services that support chamber members and businesses in order to promote the economic vitality of our community.