

# Summertime, can it be?

## Seeking qualified employees?

We invite you to join us at the..

## 2014 Leadville Job Fair

**Tuesday May 13th  
2:30 pm to 5:30 pm  
National Mining Hall of Fame,  
Conference Center  
(W.10th entrance )**

Sponsored by your local community partners at no additional cost...



Chamber of Commerce



**Complete the Registration form and  
email it to:**

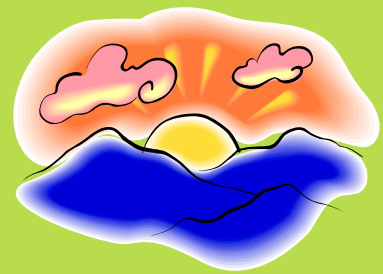
**Cdle leadville wfc@state.co.us**

Leadville Workforce Center

PO Box 1263

Leadville, CO 80461

719.486.2428



**Please RSVP prior to 5/9/2014 to the Leadville Workforce Center**