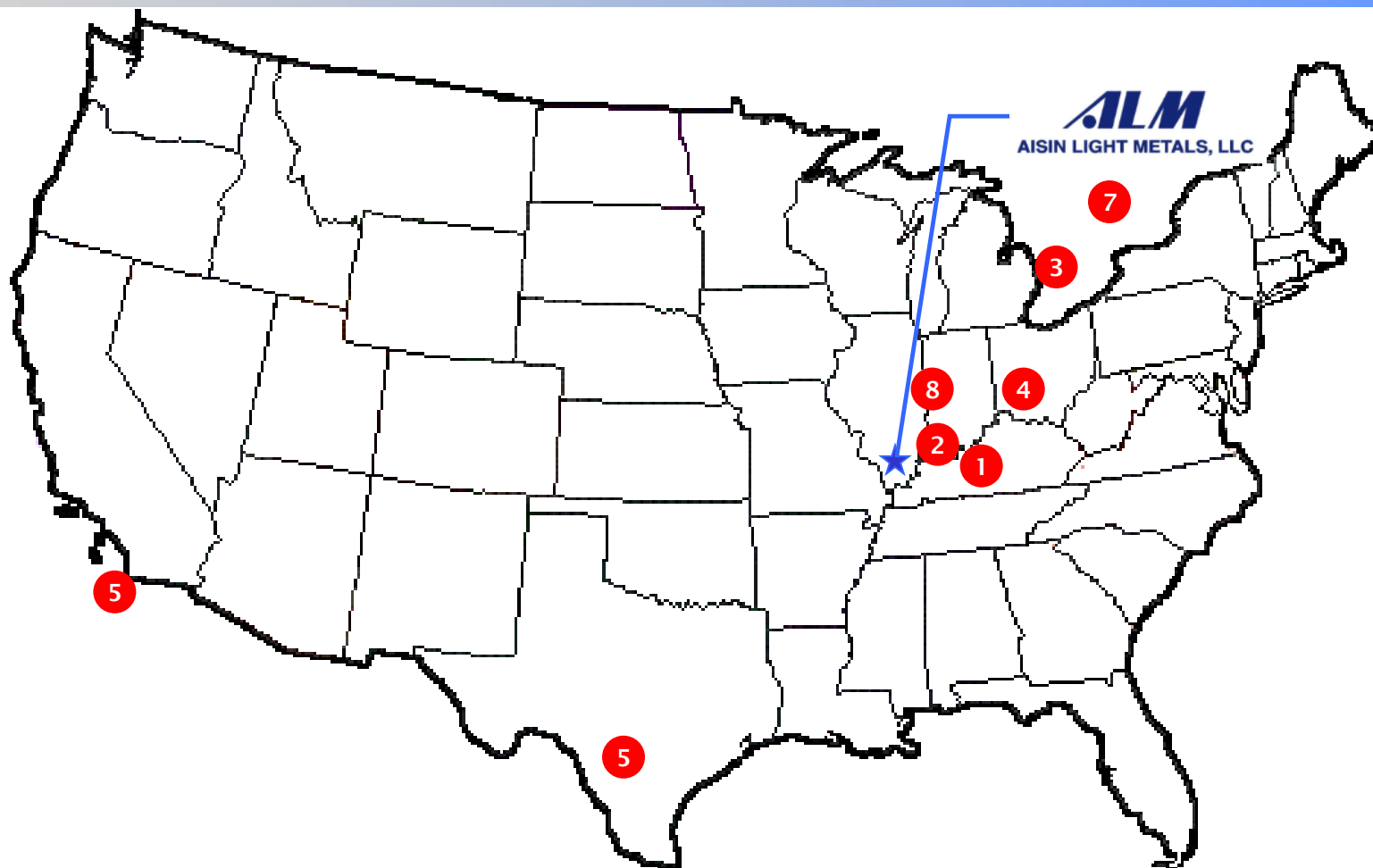


CORPORATE OVERVIEW



ALM
AISIN LIGHT METALS, LLC

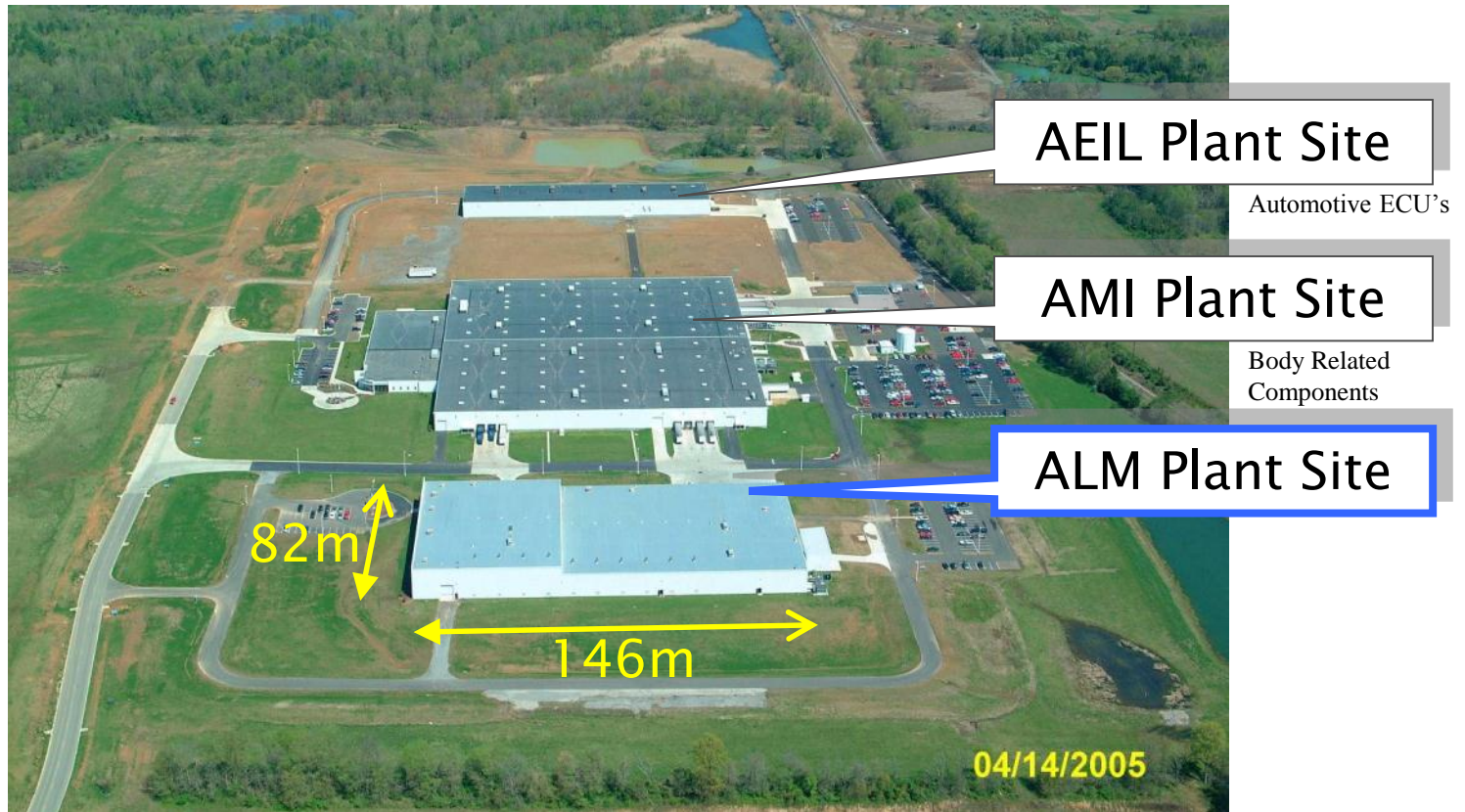
CUSTOMER LOCATIONS



- 1 TMMK -Georgetown, Kentucky
- 2 TMMI -Princeton, Indiana
- 3 TMMC- Cambridge, Ontario
- 4 ADSMO -Lebanon, Ohio

- 5 TMMTX -San Antonio, Texas
- 6 TMMBC- Baja California, Mexico
- 7 CHRYSLER- Brampton, Ontario
- 8 SIA -Lafayette, IN

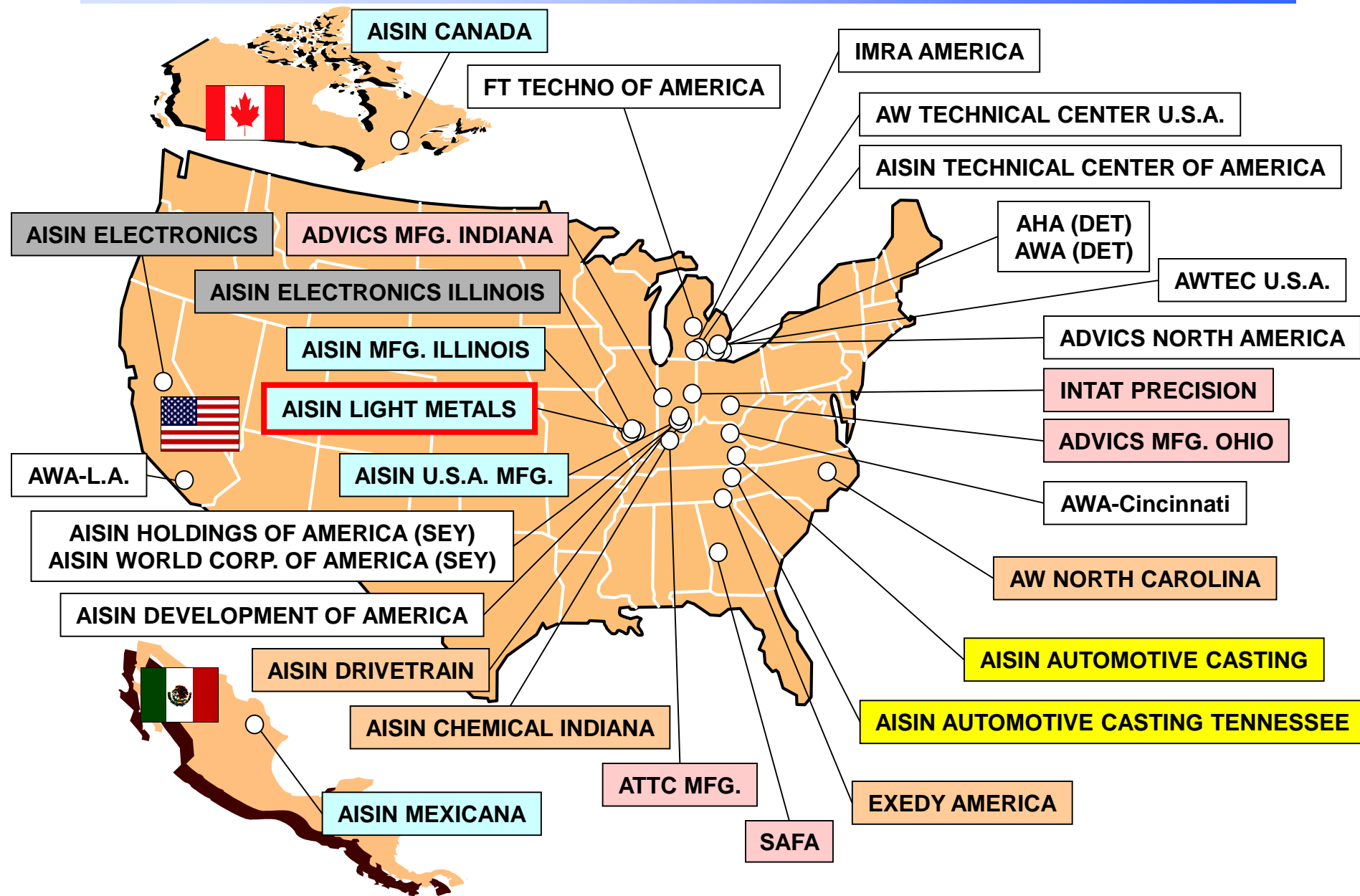
SITE LAYOUT



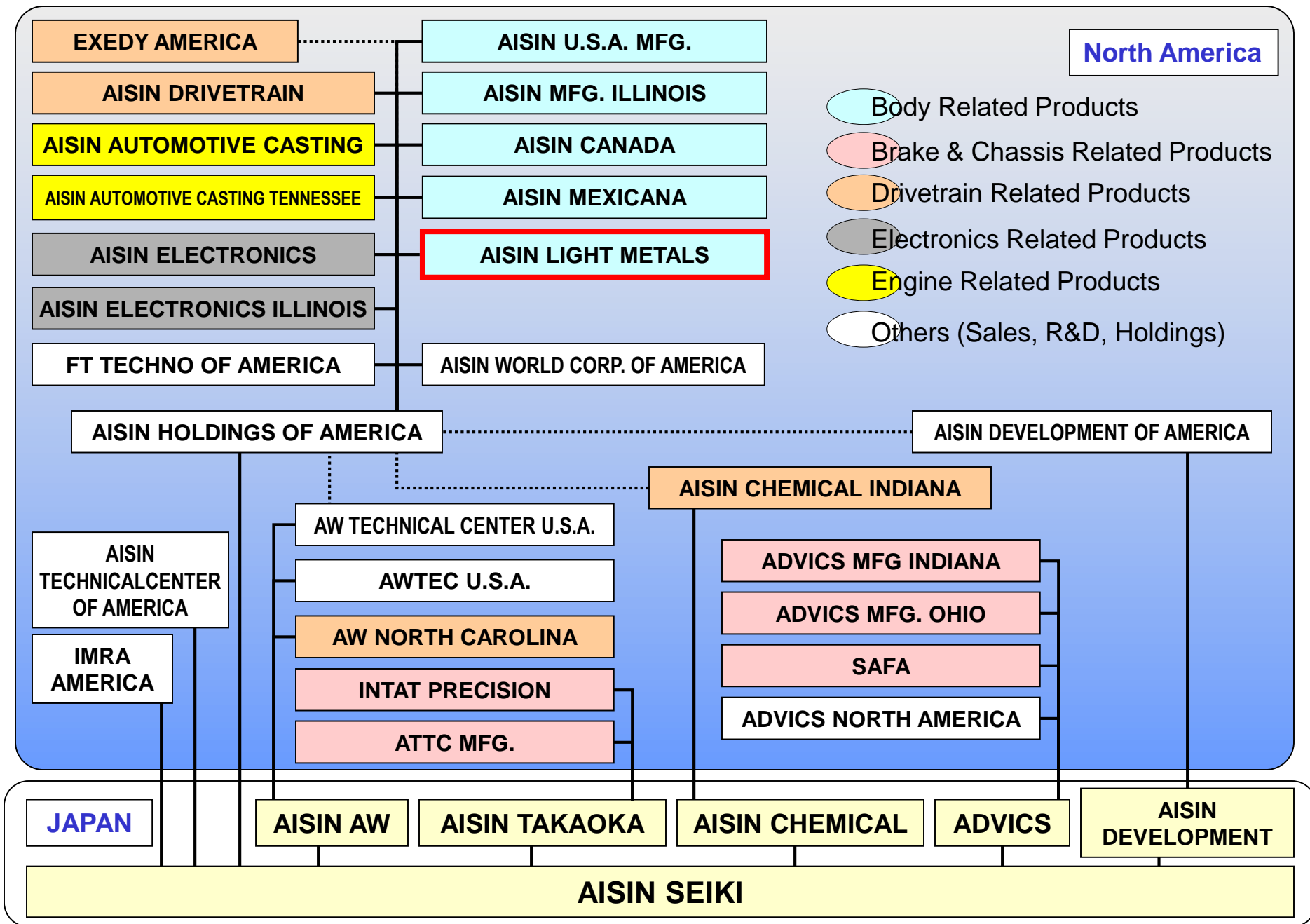
- Site — 20 acres

- Building — 129,000 sq.ft. (12,000m²)

AISIN COMPANY LOCATIONS



AISIN CORPORATE FAMILY CHART



PROFILE

Management Officer

■ President: Ryoju Tsuji

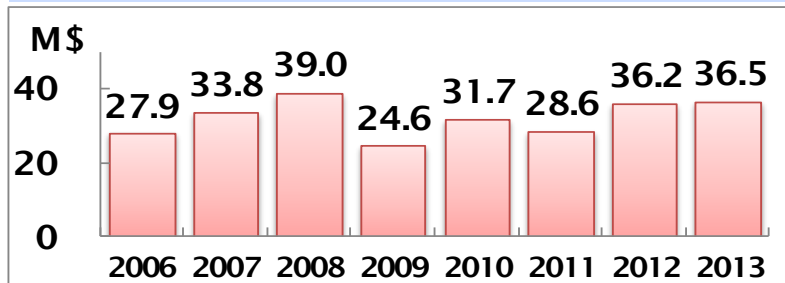
Business

- Automotive Parts Production
 - Bumper Reinforcement
 - Bumper Reinforcement Extension
 - ABS Body

Milestone

- 7/2003 : Foundation
- 4/2004 : Completion of Building
- 9/2004 : First Shipping

Sales



Employees

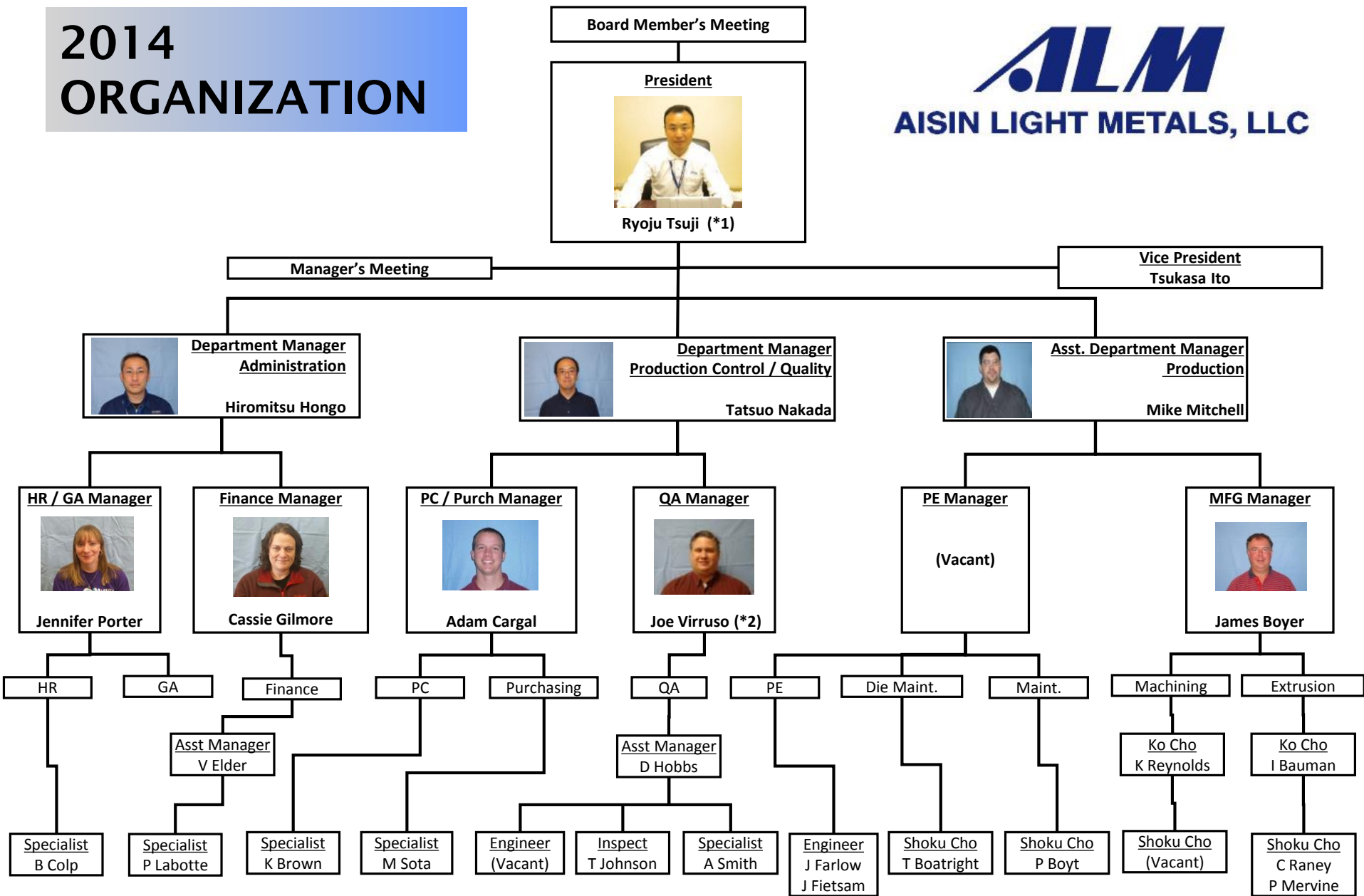
■ Currently: 96



Ryoju Tsuji, President

Aisin Light Metals is contributing to a better global environment through the manufacturing of “light metal” products for vehicles. The goal of ALM is to become a leading manufacturer of aluminum extrusion automotive parts. We will meet the expectations of our team members, local community, and those with a shared interest in ALM by being committed to solid financial performance.

2014 ORGANIZATION



(*1) Chief of Safety & Health Committee

(*2) ISO and TS Representative

(*3) Safety Management Supervisor

QUALITY

AISIN's reputation is worldwide
for our state-of-the-art products.



Quality Policy:

“We will meet our customers satisfaction by
continuous improvement of our processes
and products through quality assurance activities.”

RESPECT

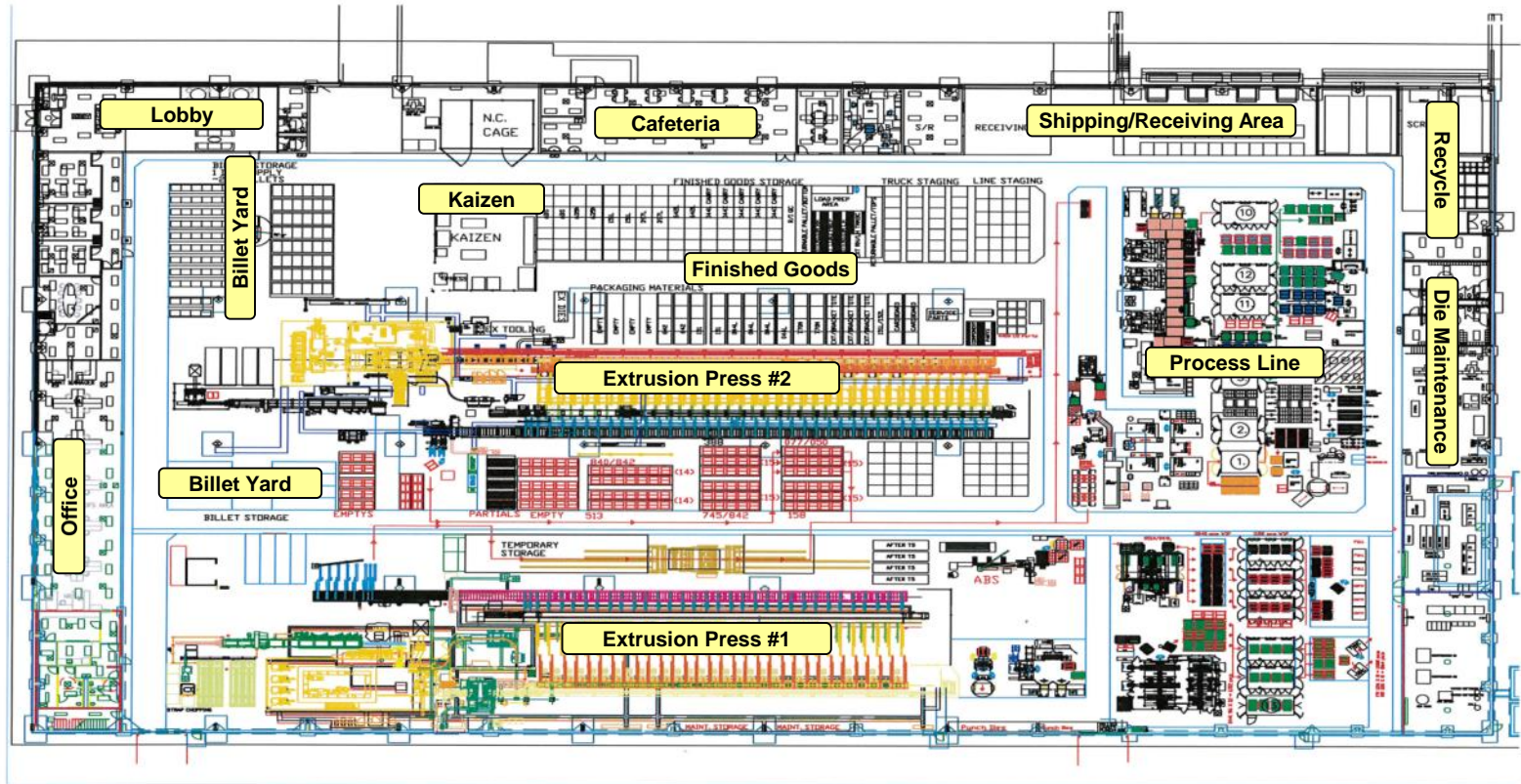
We Value Human Resources

Team Members are AISIN's Most Valuable Assets.

We treat them with the respect they deserve.



PLANT LAYOUT



EXPANSION

PRODUCT OVERVIEW - 2014

DODGE CHARGER



Chrysler – Brampton,
**Rear Bumper
Reinforcement**

TOYOTA TACOMA



TMMTX- San Antonio, TX
**Front Bumper Reinforcement
Reinforcement Extensions**

TOYOTA TACOMA



TMMBC – Mexico
**Front Bumper Reinforcement
Reinforcement Extensions**

TOYOTA TACOMA



ADVICS – Lebanon, OH
Antilock Brake System Body

TOYOTA AVALON



TMMK – Georgetown, KY
Rear Bumper Reinforcement

TOYOTA CAMRY



TMMK – Georgetown, KY
Rear Bumper Reinforcement

Honda CR-V

RX350



TMMC –Cambridge, ON, Canada
**Front Bumper Reinforcement
Rear Bumper Reinforcement**

TOYOTA HIGHLANDER



TMMI-Princeton, IN
**Front Bumper Reinforcement
Rear Bumper Reinforcement
Engine Compartment**

PROCESS OUTLINE – 1

222A Bumper Reinforcement



Extrusion



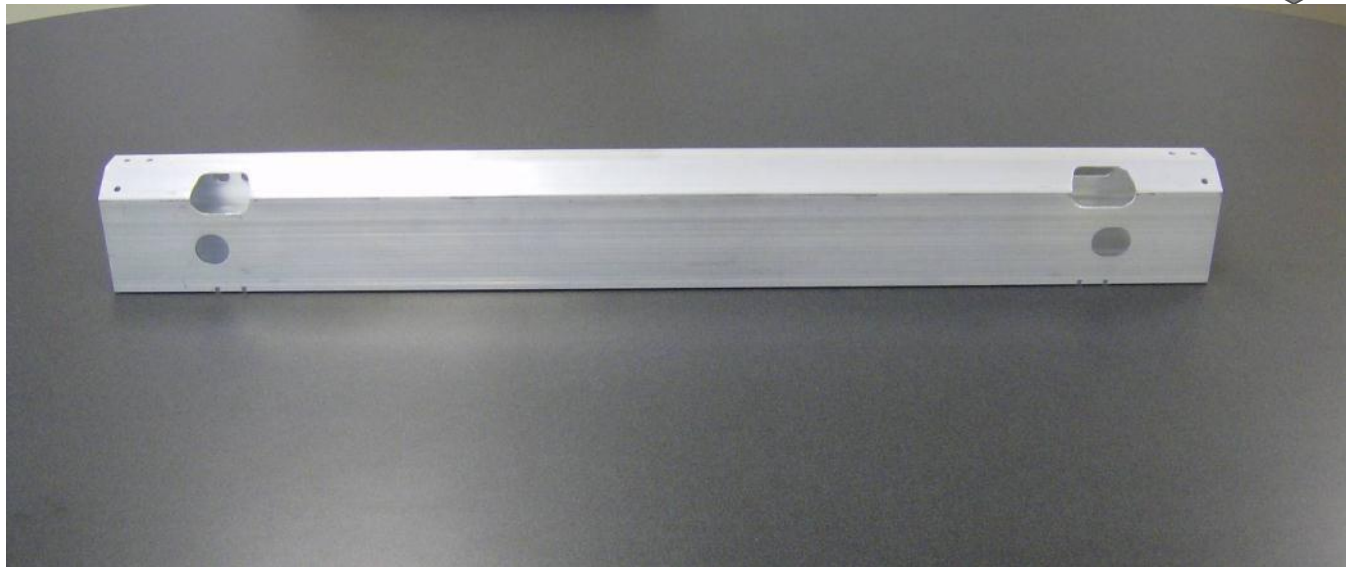
Heat-treatment



Punching



Inspection



PROCESS OUTLINE - 2

440A Bumper Reinforcement



Extrusion



Punching



Bending



Milling Machine



Heat-treatment

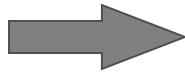


PROCESS OUTLINE – 3

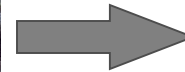
051A Bumper Reinforcement



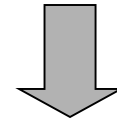
Extrusion



Punch, Bend



Heat-treatment



PROCESS OUTLINE - 4

151L Bumper Reinforcement



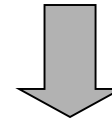
Extrusion



**Punch, Drill,
Bend**



Heat-treatment



PROCESS OUTLINE – 5

416A Bumper Reinforcement



Extrusion



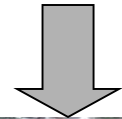
Punch



Bend



Milling Machine



Heat-treatment



PROCESS OUTLINE – 6

LA/LX Bumper Reinforcement



Extrusion
w/water



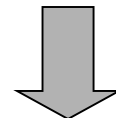
Stretch bend



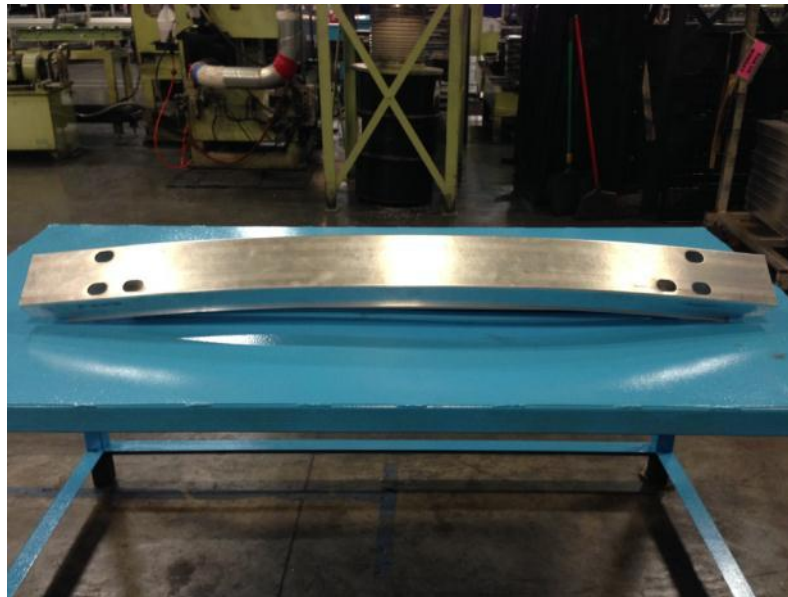
Miter Saw



Punch



Heat-treatment



PROCESS OUTLINE - 7

ABS Body



Extrusion



Heat-treatment



Cutting





ALM
AISIN LIGHT METALS, LLC