

# Franklin County 2024 SPRING CLEAN-UP



## Community Dump Days

*A roll-off will be in each community on the date specified. Please contact your town directly with any questions regarding rolloff placement or whether the community is participating in the event.*

### City of Ottawa

Friday, April 5 and Saturday, April 6

*(City of Ottawa residents only)*

### West of 59 Highway

Friday, April 12 and Saturday, April 13

*(Pomona, Williamsburg, Princeton, Richmond)*

### East of 59 Highway

Friday, April 19 and Saturday, April 20

*(Wellsville, Rantoul, Lane)*

## OPEN TO THE PUBLIC

Friday, April 26 | 8 am to 3 pm

Saturday, April 27 | 8 am to 12:30 pm

Franklin County Transfer Station  
3323 Osborne Terrace, Ottawa, KS

*Open to all Franklin County residents for free disposal*

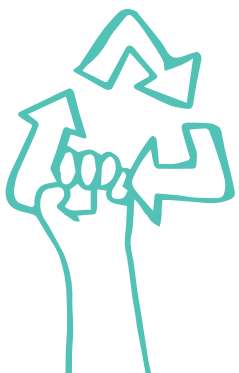
## Please recycle first!

Cardboard, all paper products, glass, tin cans, aluminum cans, plastics #1 - #7.

**Franklin County Recycling Center**

2017 S. Elm, Ottawa, KS 66067

Hours: Monday - Friday, 7 am to 3 pm



## Please note:

- Commercial haulers will be charged per usual
- All trash must be covered
- Tires will be accepted for the regular fee
- Large appliances without freon are accepted for free
- Large appliances with freon are accepted for a \$20 fee

## The following items will NOT be accepted:

- Business waste
- Oil
- Gas
- Gas tanks
- Burned trash residue
- Latex paint or liquids

## Household hazardous waste:

Household hazardous waste, such as oil based paint, batteries, chemicals, etc. are collected at the **Franklin County Noxious Weed Department**, Monday through Friday from 7 am to 3 pm. For more information, call 785-229-3170.



**Franklin**  
COUNTY KANSAS

— EST. 1855 —