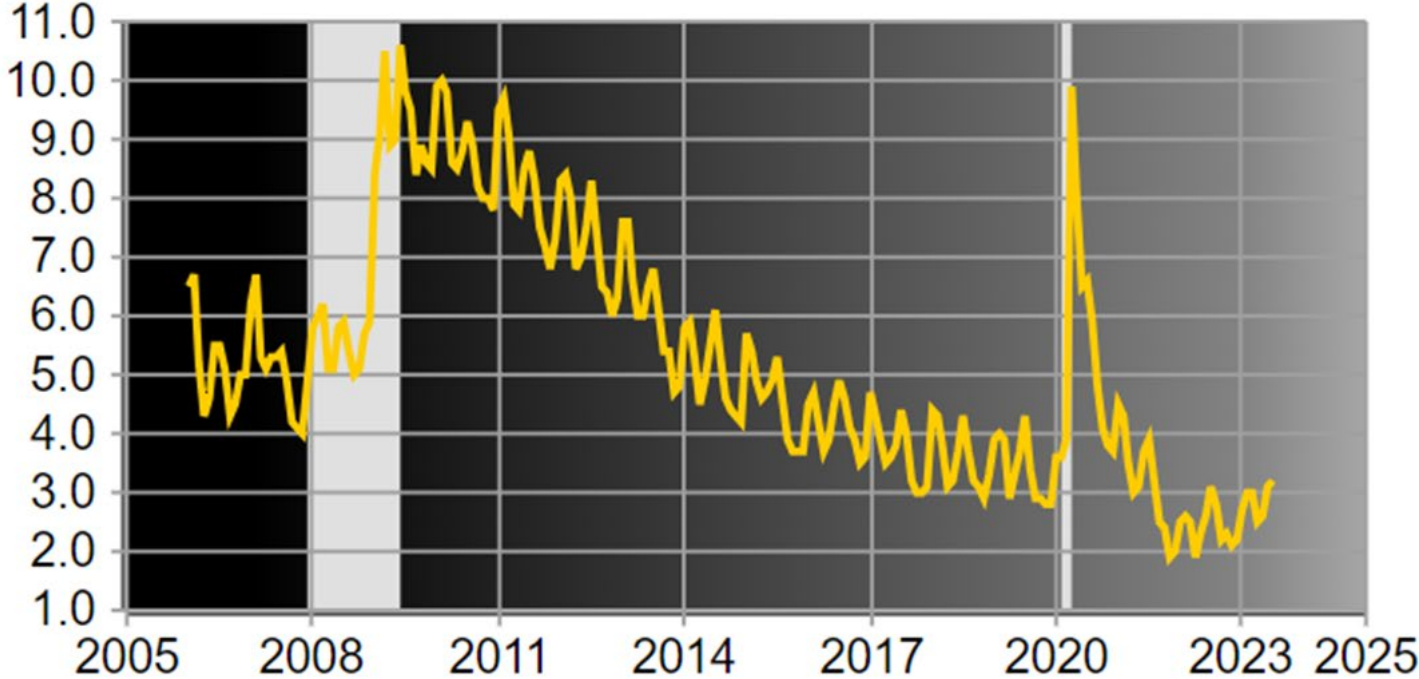




Franklin County Economy

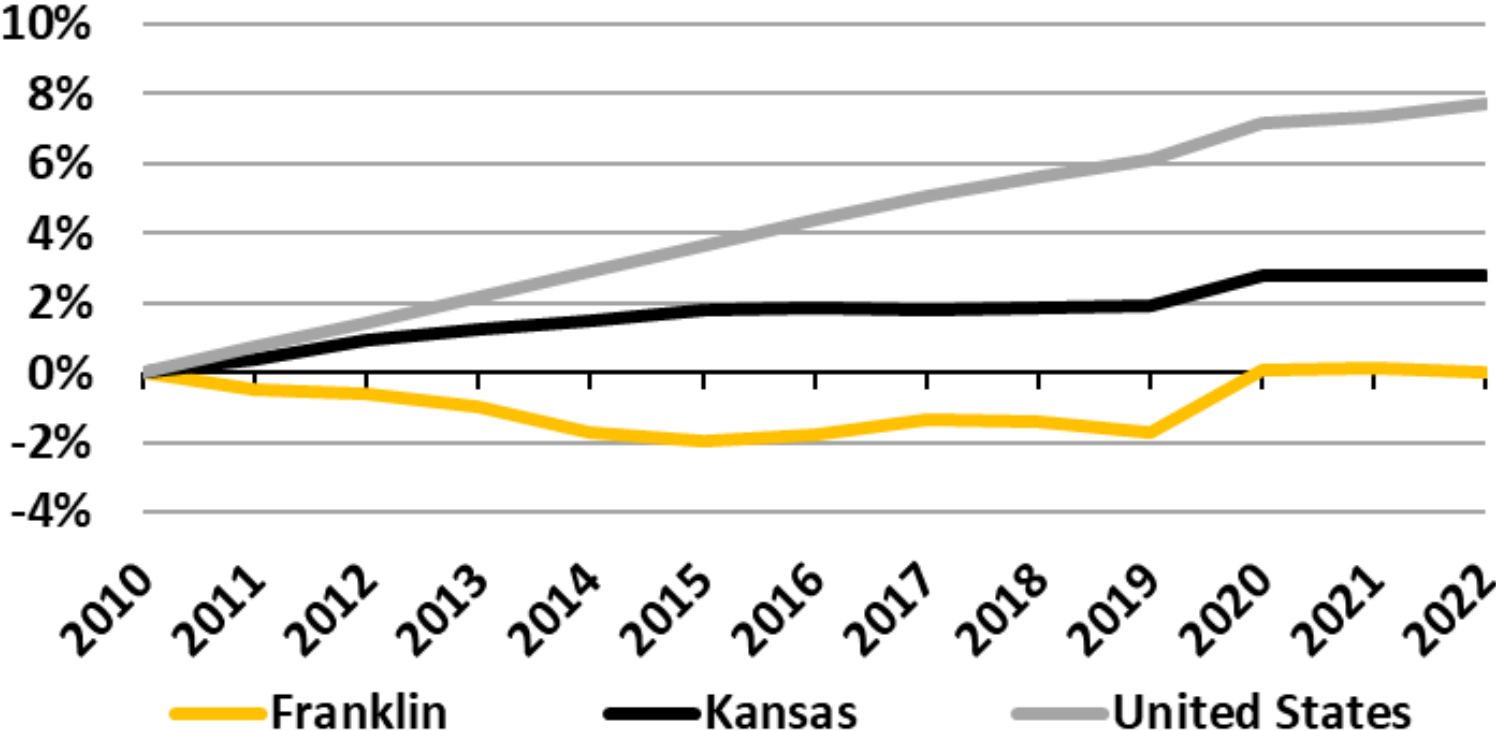
Unemployment Rate

Unemployment Rate - Franklin County, KS - Civilian Labor Force (not seasonally adjusted)



Population Growth

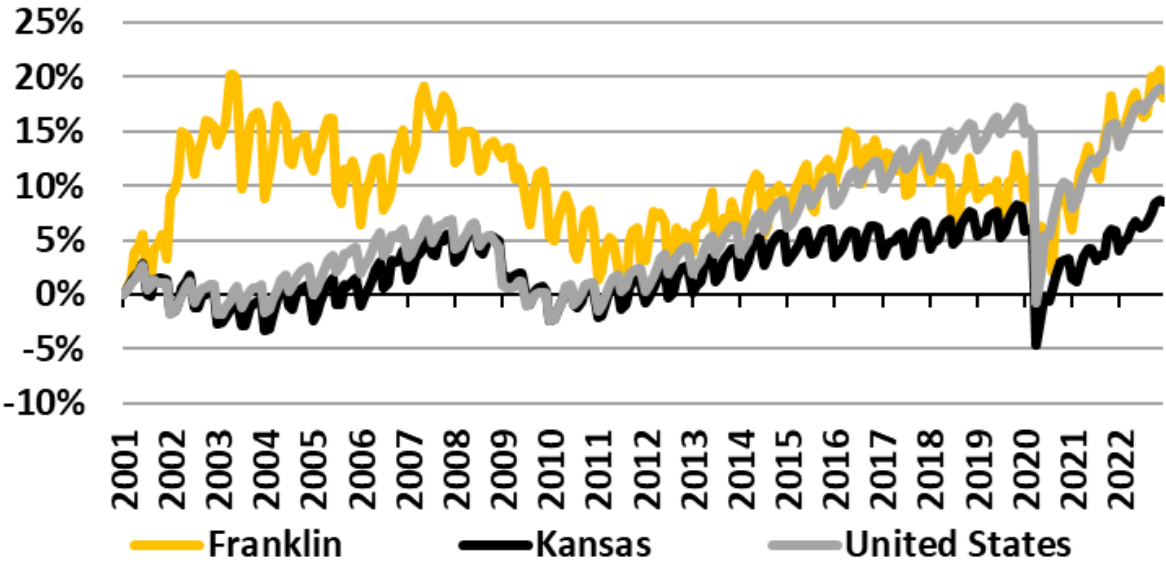
Franklin County Population



Source: CEDBR, Census - CPT & NSP, (Cumulative)

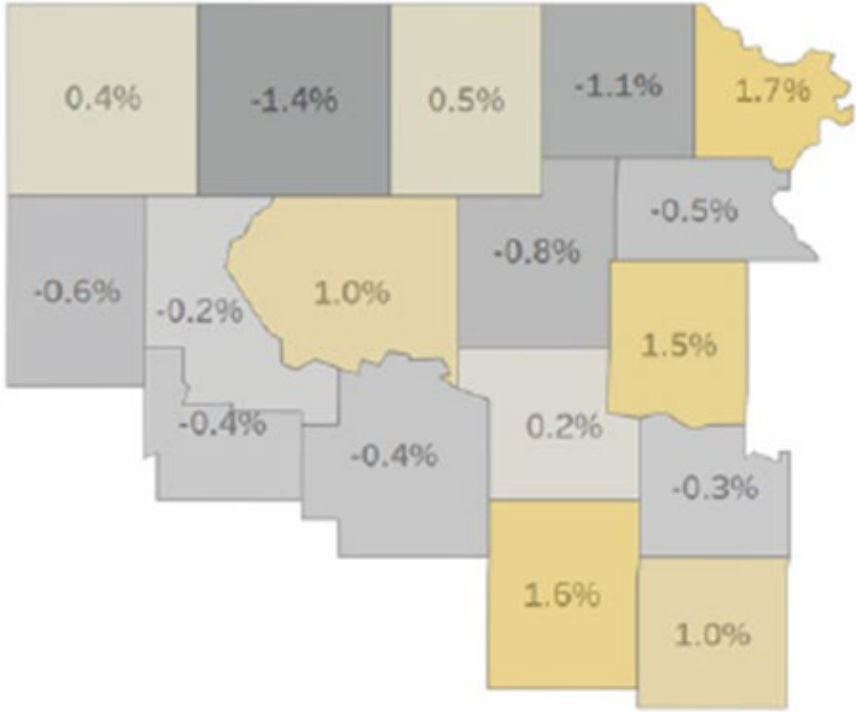
Employment Growth

Franklin County Employment



Source: CEDBR, BLS - QCEW, (Cumulative)

Employment Growth — 2017-2022



GROWTH



Employment and Wages by Industry

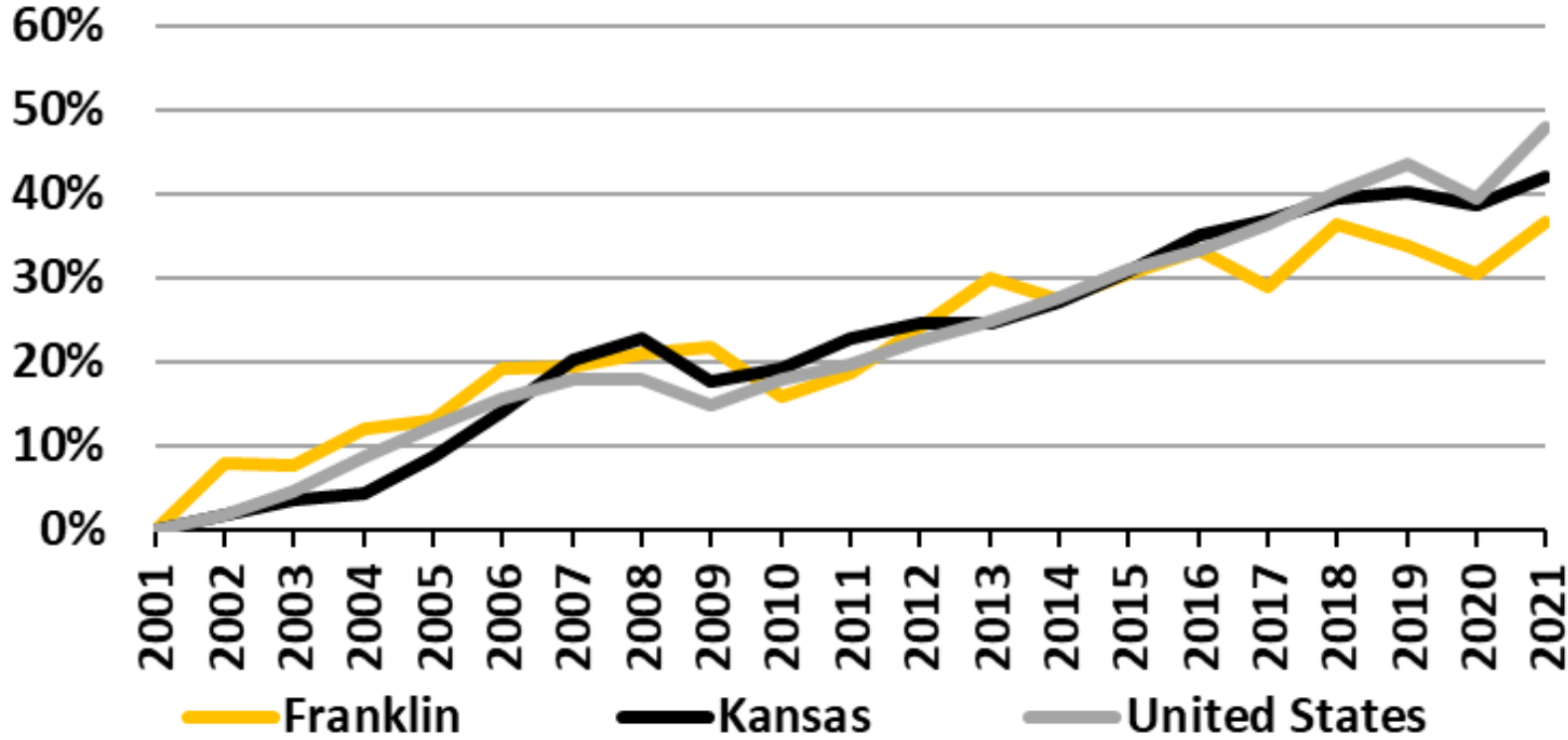
Employment by Industry

Franklin County Industry	Employment			Annual Pay		
	2021	2022	Difference	2021	2022	Difference
Natural Resources and Mining	167	156	-11	\$ 51,373	\$ 55,438	\$4,065
Construction	393	460	67	\$ 52,613	\$ 58,394	\$5,781
Manufacturing	775	858	83	\$ 55,041	\$ 59,335	\$4,294
Trade, Transportation, and Utilities	3,467	3,601	134	\$ 46,799	\$ 48,361	\$1,562
Information	22	27	5	\$ 27,900	\$ 39,273	\$11,373
Financial Activities	204	193	-11	\$ 77,929	\$ 56,361	-\$21,568
Professional and Business Services	591	705	114	\$ 45,522	\$ 45,910	\$388
Education and Health Services	1,416	1,391	-25	\$ 42,563	\$ 44,669	\$2,106
Leisure and Hospitality	769	820	51	\$ 15,338	\$ 16,644	\$1,306
Other Services	159	162	3	\$ 38,720	\$ 42,220	\$3,500
Federal Government	63	61	-2	\$ 57,531	\$ 63,131	\$5,600
Local Government	1,410	1,434	24	\$ 39,673	\$ 39,570	-\$103
State Government	68	67	-1	\$ 41,177	\$ 43,102	\$1,925
Total, All Industries	9,504	9,934	430	\$43,998	\$45,394	\$1,396

Source: CEDBR, BLS - QCEW

GDP Growth

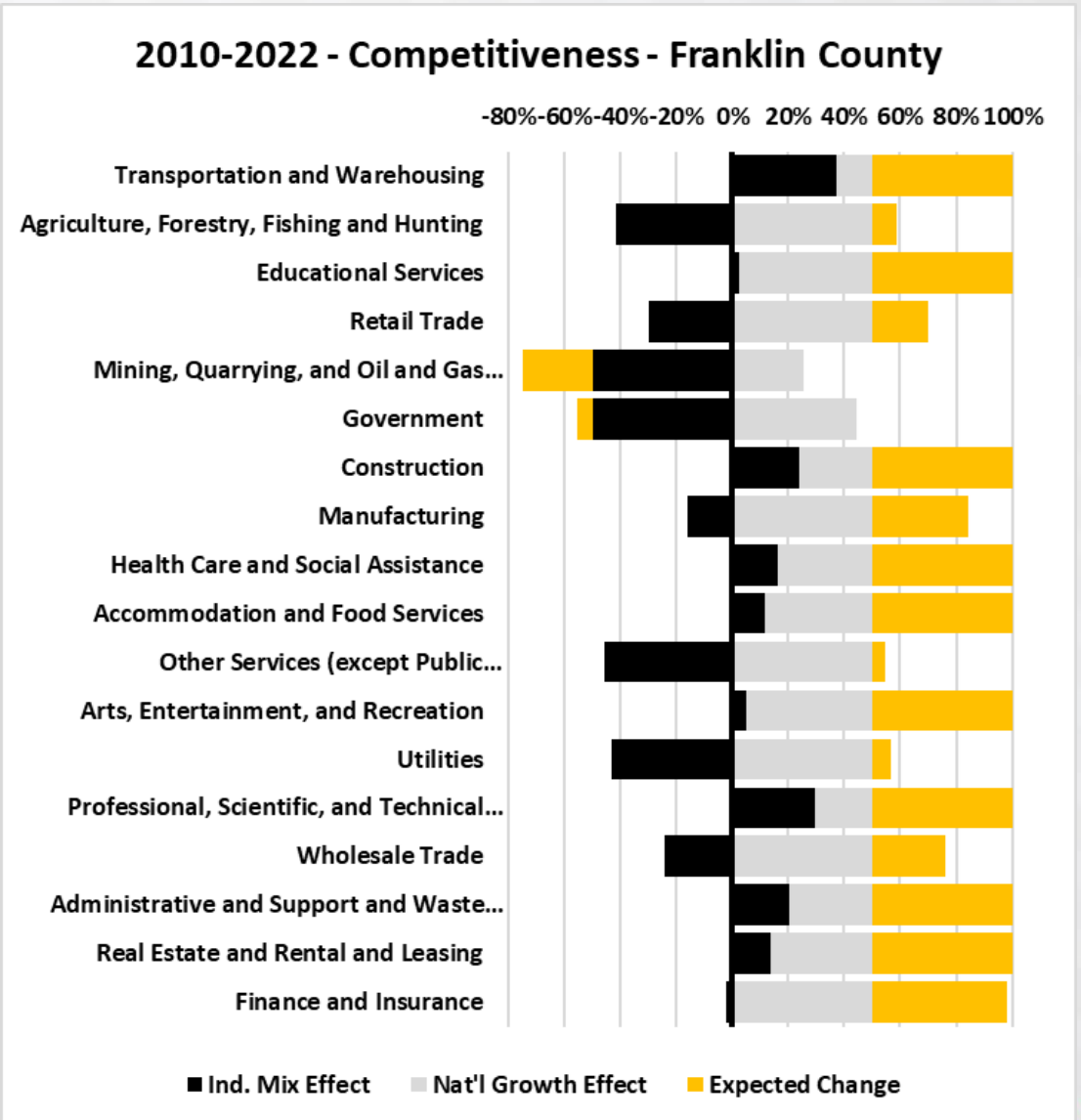
Franklin County GDP



Source: CEDBR, BEA, (Cumulative)

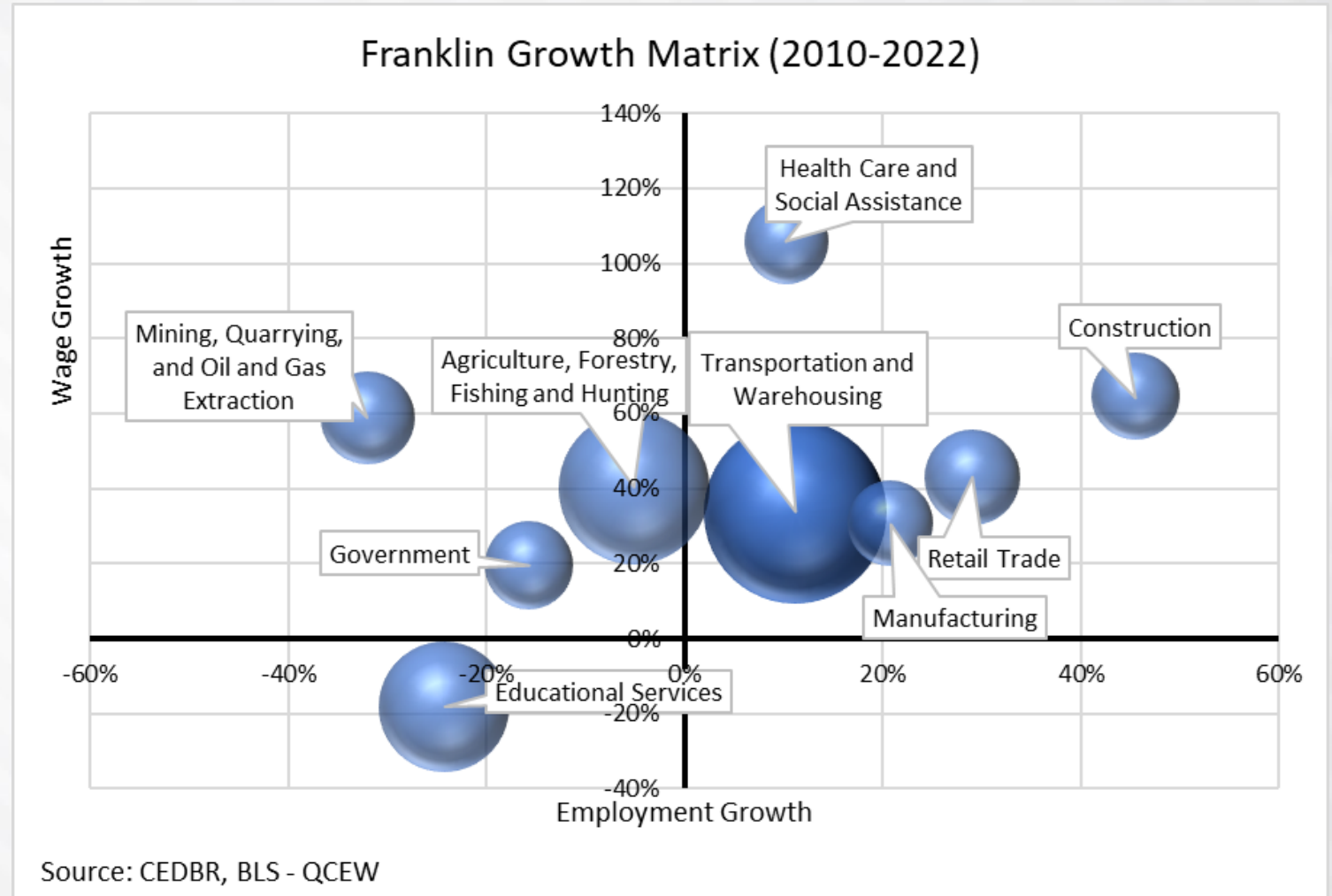
Shift Share

- **More detail** at: <https://kb.lightcast.io/en/articles/6957549-understanding-shift-share>
- **Purpose:** Highlights the regional competitiveness in certain industries
- Black: **Industry Mix Effect** – Growth if the regional industry grew at the same rate as that same industry nationally
- Gray: **National Growth Effect** – job growth an industry is expected to gain or lose according to the industry's national job growth
- Gold: **Expected Change** - Job growth expected based on the national growth effect and the industry mix effect
- Sum of three bars is actual growth



Industry Growth Matrix

- **Purpose:** Illustrates relationship of employment to wage growth of concentrated industries
- **Upper right** quadrant indicates a booming industry environment
- **Size** of bubble indicates industry employment concentration
- Growing wages without growing employment may signal tight labor markets



Labor Force Inflow, Internal Flow, and Outflow

- Left: **Inflow** – How many people live outside Franklin County but commute in to work
- Center: **Inflow** – How many people both live and work in Franklin County
- Right: **Outflow** – How many people live in Franklin County but commute out to work
- Source: Census LEHD

