



**PIOCHE  
WALKING TOUR  
PG. 4**



**EARLY DAYS IN  
LINCOLN COUNTY  
PG. 7**



**STATE PARKS IN  
LINCOLN COUNTY  
PG. 8**



**LABOR DAY  
NOW  
PG. 13**

# TREASURE HILL CHRONICLES

Summer, 2012

PIOCHE THEN AND NOW

**FREE!**  
Take one.

## CELEBRATING 107 YEARS!



Welcome to the Labor Day issue of the Treasure Hill Chronicles. Labor Day weekend will mark our 107th anniversary of this event. Pioche's Labor Day celebration has been continuous through good times and bad and has experienced many changes, but it is always eagerly anticipated by Lincoln County's present and former residents, especially those in and from Pioche. Several things have been continuous over many of the years, you might say a tradition, such as the sunrise salute to literally shake people out of bed on Monday morning, mining events, various sporting events, kids games, the fireworks, the Labor day Parade and great meals. Roscoe Wilkes has contributed a story about Labor days past, see it in this issue. We have included a schedule of the numerous events that start on Friday night, August 31st and continue through Monday afternoon, September 3rd.

The busiest day with the most things on the agenda is Saturday, so if you can only spend one day, this is probably the one to pick. If you are staying over, it pays to get here on Friday and find a place to camp or stay. Hotel/motel rooms are hard to come by because those in the know book them a year ahead, but there are three full-service RV Parks in the vicinity and a free town RV park that provides water

only and there is lots of open space for those that are self-contained.

The businesses uptown can provide most of your needs, but in order to handle the additional guests, the following organizations provide meals at a reasonable price at the Ramada in the Town Park: The Masonic Lodge provides breakfast Saturday, Sunday 7-10 and Monday 6-9; the Berean Baptist Church sponsors a spaghetti dinner on Saturday at 5 PM; another dinner is available from 4 PM on Sunday; and the Catholic Cemetery Ladies run a Taco Stand from 11 AM until they run out (this is very popular, so it doesn't take long).

In addition, a variety of food vendors will return to the park this year and food will also be available uptown Pioche. Be sure to stop by our stores and Chamber of Commerce while you are here. We have Labor Day shirts, Labor Day buttons and other mementos. Just a gentle reminder; you are subject to be thrown in the Hoosgow on Main Street if you are not wearing a Labor Day Button. These only cost \$1 and there are numbers on the back for a cash prize drawing during the parade.

### FRIDAY

Amazon Ranch in nearby Dry Valley features a Kids Horse Camp, with a trail-ride, sleep-over, Dutch-oven dinner and breakfast. Bingo will be held in the new fire hall on Airport Rd. It is back for the second year. Last year lots of fun was enjoyed by the overflowing crowd so go early if you want a seat and pick of bingo cards.

### SATURDAY

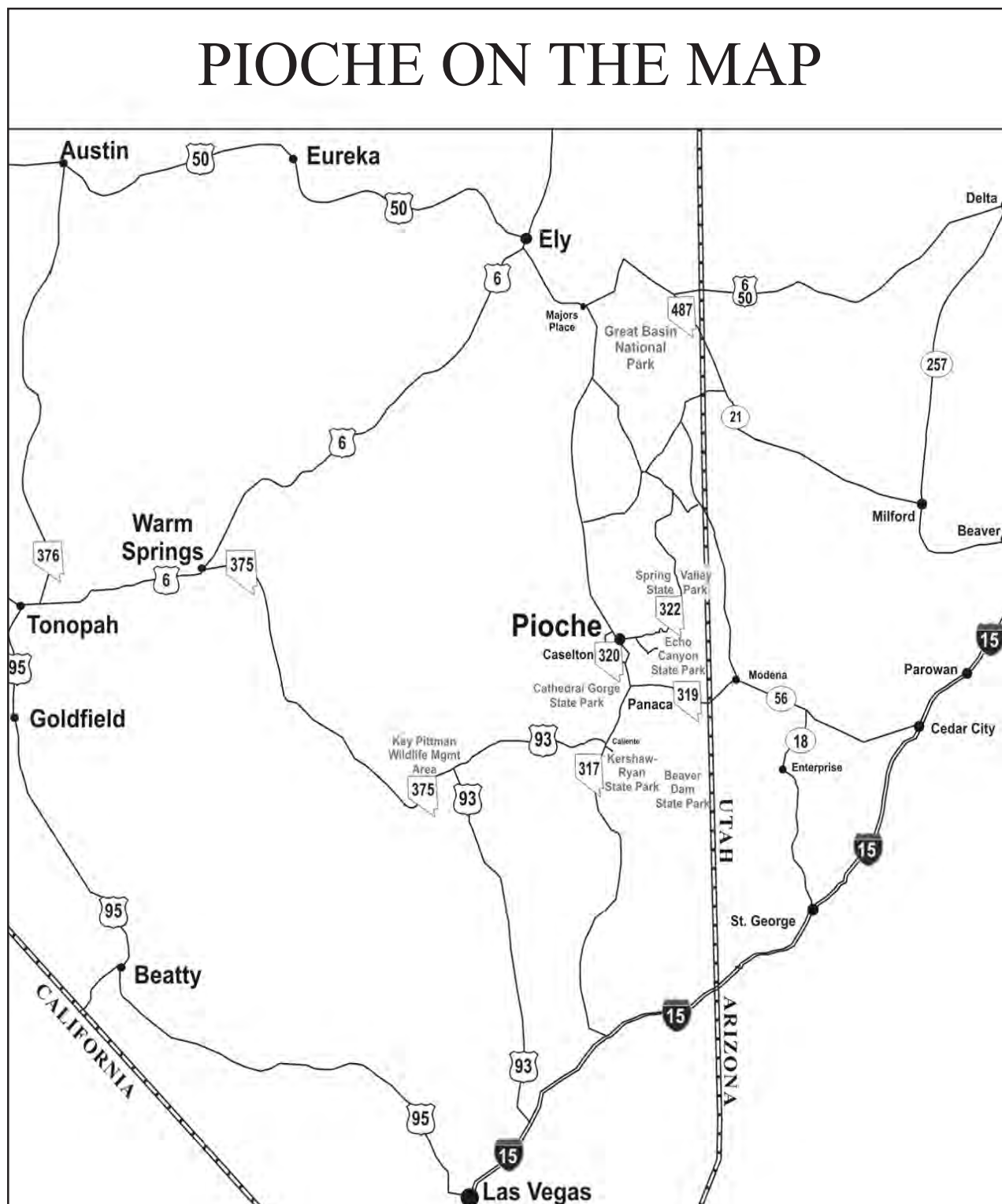
Activities begin with the Masonic Lodge breakfast and softball tournament at 7 AM. The latter attracts teams from all over the region and lasts through Sunday. Lincoln Links Golf Tournament at the Lincoln County Golf Course has start times of 7 and 9 AM. Additional morning events are the Volley Ball Tournament at the new school and Turkey Shoot at the Rifle Range (just below the golf course on SR322), sponsored by the Pioche Rod and Gun Club, both at 8 AM. The popular Craft Fair at Pioche Town Hall on lower Main St. is open 9 AM to 5 PM and the Farmer's Market 9:30 to 11:30 AM at Town Park.

**CELEBRATING continued on Page 2**

# Welcome TO OUR TOWN

Before you set out to explore the town and its surroundings, please take a few minutes to browse through this informative little paper. You will find a tour of the uptown historic district, a brief overview of life in a boom town mining camp miles from mainstream America that is in stark contrast to the present day village. We are surrounded with what is probably our biggest asset, the natural World of the high desert of southeastern Nevada. You will find a description of our state parks, nearly endless public lands, the wildlife viewing, hunting and fishing possibilities. For those that want to stay a while, our businesses are advertising their services and for those that might be tempted to permanently join us for a more laid back lifestyle, we have included a relocation section with a listing of community services, fees, etc. Lastly, we have included a bibliography for further reading and internet browsing.

## PIOCHE ON THE MAP



### CELEBRATING continued from page 1

The Creative Artist Exhibit and Sale will be 10 AM to 5 PM in the gym at the old school on Main St. Hay Scramble (money is hidden in the hay and kids frantically search for it) and Cake Walk (the participants walk to music on numbered squares and when the music stops, the person on the winning number receives a cake; this continues until the cakes are all claimed.) These events are held at 10 AM at the T-Ball Field at the bottom end of the Town Park. A new event this year is Chalk Art 10 AM to 5 PM at the old school on Main St. Kids can all swim for free at the Town Pool from 12 to 3 PM. Children's mucking starts at 1 PM (they are timed on how fast they can shovel a pile of muck (dirt) into a small wheelbarrow.)

Singles Horseshoes starts at 2 PM and usually lasts until late because this is a very popular event and there are many participants. The adult mucking starts at 2:30 PM (contestants are timed on how long they take to fill an ore car, level to the top, with a pile of muck.) A hilarious and popular new game has been added in recent years and this is called Chicken-chucking (a shovel is used to toss a rubber chicken over the shoulder as far as possible). This event comes off at 3:30 PM, followed by a Spaghetti Dinner at 5:00 PM. The final event of the evening is the Night Parade and Street Dance on Main Street uptown. The dance goes from 7 PM until midnight, featuring Rockwell Entertainment. The dance is interrupted at 9:15 for the Electric Light Parade.

### SUNDAY

Sunday starts at 7 AM with Masonic Lodge breakfast, resumption of the softball tournament and the Eagle Valley Resort's Fishing Derby out at Spring Valley Reservoir. The Farmer's Market continues from 9:30 to 11:30 AM at the Town Park. There is a Golf Auction at the Ramada in the Town Park at 11 AM (they auction off serviceable donated items to raise funds to improve the golf course). The Doubles Horseshoe Tournament starts in the Town Park at Noon and usually lasts all afternoon. The kids' free swim continues from Noon to 3 PM. There will be an open house at the renovated Thompson's Opera House from Noon to 3 PM. The Adult Mining events begin at 1 PM at Town Park; events include Liner and Jack-leg and cash prizes will be awarded. Also at 1 PM is the Pet Show at Town Park. Beginning at 2 PM are the exciting Lawn Mower Races, held at the Horse Arena down by the Honor Camp. Dinner in Town Park begins at 4 PM. The evening ends with the most popular event, the Fireworks. These start at 9 PM and attract residents from throughout the county. Pioche takes a back seat to no one when it comes to our pyrotechnics; they are spectacular.

### MONDAY

Finally comes Monday, and we make a special effort to get the weary celebrants out of bed at the crack of dawn with the Sunrise Salute, you don't just hear it, you feel it (several sticks of dynamite set off one right after another for several minutes). The Masonic Lodge breakfast is 6:00 AM to 9 AM. A 10K Fun Run departs from the Town Park at 8 AM, followed by the Labor Day Parade on Main Street at 10 AM. This year's theme is "Song Lyrics" and all the floats are judged with that in mind. After the parade, everyone that isn't bolting for home heads for the Taco Stand and the Kids Games in the Town Park. A special dedication for the mucking machine on display that was donated by LaVar Hollingshed will be at Town Park. The final event is the drawing for the raffle prizes. This year they are a television, upright freezer, and quilt. Tickets cost \$1 each or 6 for \$5.

**107TH ANNUAL LABOR DAY SCHEDULE  
AUGUST 31 - SEPTEMBER 3, 2012**

**FRIDAY, AUGUST 31<sup>ST</sup>**

6:00 pm Friday to 11:00 am Saturday..... Kids Horse Camp, (Amazon Ranch)  
Trail-ride, Sleep-over, Dutch Oven Dinner, Breakfast  
[www.amazonranch.us](http://www.amazonranch.us) • 775.962.5676

7:00 - 9:00 pm ..... Bingo (New Fire Hall)

**SATURDAY, SEPTEMBER 1<sup>ST</sup>**

7:00 - 10:00 am ..... Masonic Lodge Breakfast (Town Park)  
7:00 am ..... Softball Tournament - 1<sup>st</sup> Round (Pioche Ball Park)  
7:00 am ..... Golf Tournament - 1<sup>st</sup> Flight (Lincoln County Golf Course)  
8:00 am ..... Volley Ball Tournament (New Elementary School)  
8:00 am ..... Turkey Shoot (Rod & Gun Club Shooting Range)  
9:00 am ..... Golf Tournament - 2<sup>nd</sup> Flight (Lincoln County Golf Course)  
9:00 am - 5:00 pm ..... Craft Show (Town Hall)  
9:30 am - 11:30 am ..... Farmer's Market (Pioche Memorial Garden Town Park)  
10:00 am ..... Bake Sale (Thompson Opera House)  
10:00 am - 5:00 pm ..... Creative Artist of Lincoln County (Old School Gym Main Street)  
10:00 am - 5:00 pm ..... Chalk Art (Sign up @ Old School on Main Street)  
10:00 am ..... Hay Scramble/Cake Walk (T-Ball Field Town Park)  
12:00 N - 3:00 pm ..... Kids Free Swim (Town Pool)  
1:00 pm ..... Children's Mucking (Sign-up by 12:30 pm Town Park)  
2:00 pm ..... Singles Horseshoes (Town Park)  
2:30 pm ..... Adult Mucking (Town Park)  
3:30 pm ..... Chicken Chucking (Town Park)  
5:00 pm ..... Spaghetti Dinner - (Town Park)  
7:00 pm ..... Street Dance - Rockwell Entertainment (Uptown Pioche)  
9:15 pm ..... Night Parade  
After Parade Street Dance Resumes

**SUNDAY, SEPTEMBER 2<sup>ND</sup>**

7:00 am - 10:00 am ..... Masonic Lodge Breakfast (Town Park)  
7:00 am - 2:00 pm ..... Eagle Valley Resort Fishing Derby (Spring Valley Reservoir)  
7:00 am ..... Softball Tournament (Town Park)  
9:30 am - 11:30 am ..... Farmer's Market (Pioche Memorial Garden Town Park)  
11:00 am ..... Golf Auction (Town Park)  
12:00 N ..... Doubles Horseshoes (Town Park)  
12:00 N - 3:00 pm ..... Kids Free Swim (Town Pool)  
12:00 N - 3:00 pm ..... Thompson Opera House - Open for Tour  
1:00 pm - 4:00 pm ..... Creative Artist of Lincoln County (Old School Gym Main Street)  
1:00 pm ..... Adult Mining Events (Town Park)  
1:00 pm ..... Pet Show (Next to T-Ball Field)  
2:00 pm ..... Lawn Mower Races (Horse Arena)  
4:00 pm ..... Dinner in the Park (Town Park)  
9:00 pm ..... Fireworks (Town Park)

**MONDAY, SEPTEMBER 3<sup>RD</sup>**

6:00 am ..... Sunrise Salute (You'll hear it and Feel It)  
6:00 am - 9:00 am ..... Masonic Lodge Breakfast (Town Park)  
8:00 am ..... 10K Fun Run (starts at Town Park)  
10:00 am ..... Labor Day Parade (Main Street)  
After Parade Kids Games (Town Park)  
11:00 am ..... Taco Stand (Town Park)

**FREEMASONS  
IN PIOCHE**

St. John Lodge #18 F. & A. M.  
230 LaCour Street P.O. Box 356  
Pioche, Nevada 89043

Our lodge strives to give back to the community, providing bikes for books, a reading program, scholarships to graduating seniors, child ID, Christmas party for the grade school, providing funds to help the grade school purchase needed supplies, and more.

St John Lodge was founded in 1873; the lodge moved to Delamar in 1902 but when mining there played out returned to Pioche. The original 1873 lodge building is still attached to the new lodge room. Due to the need for repairs, the original lodge is not presently used. The lodge members hope to restore the original building and return the lodge room to its original condition.

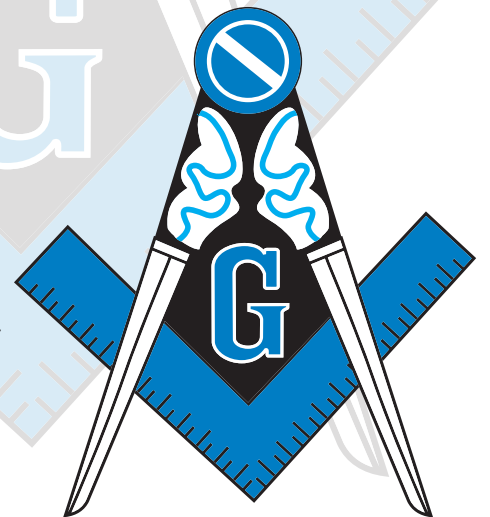
For the year 2011 the lodge was honored with the "Mark Twain" award, a national award. The press release follows. Lodge meets the second Saturday of each month and our meeting is followed by the Eastern Star. Lodge opens at noon, feel free to stop by prior to that time and talk with the members who can answer any questions you may have.



Freemasonry is the oldest fraternal organization in the world. The primary purpose is to make good men better men. We count among our members George Washington, Ben Franklin and many other signers of the Declaration of Independence and Constitution. Many presidents have been members, as have numerous others well known to us, John Wayne and Ernest Borgnine to name a couple.

Freemasonry is not a secret organization, but is an organization with secrets, which allow members to know one another.

Freemasonry is the largest charitable organization in the world, providing more than two million dollars per day. The Shriners Hospitals for children are the best known of these charities, as all Shriners are masons first. We are not, as many believe, a religion but only require a belief in a supreme being.



Mizpah Chapter Order of the Eastern Star also uses the lodge building and is a very great asset to the lodge. The Eastern Star is comprised of masons and ladies, thus husbands and wives can participate together.

**MORE FROM THE FREEMASONS  
ON PAGE 14**

**Treasure Hill Chronicles**

Published Quarterly & distributed throughout

Lincoln County



Published by:  
**Pioche Chamber of Commerce**  
P. O. Box 127  
Pioche, NV 89043  
775-962-5544

Pioche Chamber advertisers make this publication possible. Please let them know how much you enjoy "Treasure Hill Chronicles" by patronizing their businesses.  
See more of Pioche at [www.piochenevada.org](http://www.piochenevada.org)

**Eagle Valley Resort LLC**

RV Supplies,  
Store, Ice,  
Fast Food



Firewood,  
Bar, Gaming,  
Lounge, &  
Pool Table

Stay a Day - Stay a Year  
RV Spaces & Cabins to Rent

12555 Resort Road  
HC 74, Box 262-2  
Pioche, NV 89043

775-962-5293

[www.eaglevalleynv.com](http://www.eaglevalleynv.com)



**1. The Million Dollar Courthouse**



The Million Dollar Courthouse was designed by Edward Donahue and was built in 1871. It is constructed of brick and stone and borders on the "Classic Revival" style of architecture

with its detailing and proportion. The Courthouse originally cost \$16,400, and the jail an additional \$10,000, for a total of \$26,400. Due to "cost over-runs" at the beginning of the project by politicians, and delayed payments with mounting interest, the price soon ballooned to nearly 1 million dollars (\$800,000) by 1936 when it was finally paid off.

**2. The Mountain View Hotel**

The Mountain View Hotel was built in 1895 by the Ely Valley Mines to house their guests. It is a combination of styles including "Shingle" style and early 1900's "Classic Box". The building is presently in need of restoration.

**3. St. John's Masonic Lodge**

St. John's Masonic Lodge has been in continuous operation since 1873, making it one of Nevada's oldest lodges. It is constructed of stone and brick, and is a typical "False Front Pioneer" style.

**4. The Miner's Market**

The Miner's Market is located north of the Silver Café, on the corner of Main St. and LaCour Street. The store opened in 2008 and is operated by Debbie Sandoval. The town had been without a grocery store since the closing of the last one in 2002. In earlier days, the building was the site of Amsden Garage, Foglianis car dealership, Orr's garage for almost 30 years, and Alfano Brothers' The Workshop (custom woodwork).



**5. The Commercial Club/Amsden Buildings**

The Commercial Club/Amsden Buildings, built about 1865, are located at the junction of Main and LaCour streets and were once the hub of community activity. Pioche's old Fire House is adjacent to the Amsden building, and it served for nearly 40 years as the fire house and apartment for the fire chief. Attorney A. L. Scott owned the Commercial Club Building for almost 50 years beginning around 1916. He conducted his law practice on the first floor and lived in the basement area.

**6. Historic Silver Café**

Historic Silver Café, located north of the antique store has been in business for 103 years under several owners. It is one of the oldest continuously operated businesses in the state. Sisters Judy Kwiatowski and Julie White have owned and operated the restaurant for the past several years. They expanded a few years ago with the opening of the adjacent Silver Mine Gift Shop.



**7. Purple Onion Antique Store**

The antique store was first Welland's Mercantile, then Gottfredson's Dry Goods, followed by Cowley's Drug Store and later, the Baptist Church-Treasure Chest. Corbett's Antiques opened in 1993 but has been closed the past few years. Leo & Dee Schafer opened Purple Onion Antiques & Collectibles in May 2010 on a part time seasonal basis.

**8. The Lincoln County Market**

The Lincoln County Market housed the Navajo Bar before being converted into the Stop and Shop grocery market, which was closed in 2002. New owners Leo and Dee Schafer plan to open in late spring a resale shop with new and used items.

**9. Dougherty's Fine Jewelry**

John Dougherty opened Dougherty's Fine Jewelry in 2009. It previously was a deli and part of the Lincoln County Market.



**10. Grubsteak Dinner House**

(formerly known as part of the Bank Club Building)  
In the Bank Club Building, former businesses Lincoln County Market and Treasure Chest have weathered the storms of Main Street, including fires and mining boom and bust cycles. Many

businesses have come and gone in these buildings. John Valenti operated the Bank Club bar and café for many years and 1996, it was remodeled into the Grubsteak Dinner House, which closed in 2001. It reopened in spring 2010 as the Grub Pub and Deli and closed in September 2010.

**11. The Pioche Mercantile (Buggy Whip)**

The Pioche Mercantile was originally known as Hodges & Cook Mercantile. The Christian Brothers, Edwin and Lloyd, operated the store for about 40 years, following the death of their father in about 1925. For years they handled groceries and would order any amount of needed mail order supplies that you would want. The business was acquired from Edwin Christian by Jerome and Tom Sears, descendants of J. L. Sears, a telegrapher that came to Pioche around 1873 from New York. Tom sold the business in 2001. Ted Daskas is the present owner, and it is now a second-hand store.

**12. The Pioche News Stand (presently occupied by The Rag Doll)**

The Pioche News Stand was originally built in the 1860's, and was partially burned then rebuilt in the early 1870's and in 1919. The false front "Pioneer" style and treatment of the fake brick tin appears to date from the early 1900s. The first telephone system was operated from this building and was owned by J. W. Christian. For many years, part of this building was used as the Pioche Post Office. The Rag Doll gift shop now occupies this area. The News Stand and Phone Company area is now used as storage by the owners, the Christian family.

**13. Stever's Store and Beauty Shop (presently owned by SNWA)**

Stever's Store and Beauty Shop, originally built in the late 1860's, was partially burned and then rebuilt several times. It served as Stever's Apparel Store and The Garden Bar from 1934 until 1997, when the Stever family sold the business. It has gone through several hands since, and the current owner is the Southern Nevada Water Authority.

**14. The Bank Club (formerly known as the Alamo Club)**

The Alamo Club was originally built in the mid 1800s and was The Pioche Bank. It is noted for the large bank vault in the rear of the building. Throughout the years this business has hosted many notables and derelicts alike. Ernie Ferri operated the Alamo Club bar and gambling business for about 30 years,

continued on page 5

**Tillie's Mini Market & Wright's Country Cabins**

Bread, Milk, Eggs, Ice,  
Sodas, Snacks, Cigarettes, other Grocery Items  
Hunt/Fish Licenses & Supplies

Open 7 days a week 6 AM—9 PM (Summer Hours)  
Next to Bank of America

775-962-5205 704 Main Street Pioche, NV 89043

**BANK CLUB of PIOCHE**

Meet your friends uptown Pioche

Cocktails, Music, Video Poker  
Bar Snacks, Bar Food & Penny Slots

Free Pool & Internet Juke Box

723 Main Street Pioche, NV 89043 775-962-5116

**TOUR continued from page 4**

and upon his death, his wife Lena continued to the run the business. The Ferris owned the oldest continuous gaming and liquor license in the state of Nevada for many years until the 1988 sale. The current owner, Jim Marsh, purchased the building and business from Shirley Scott and renamed the bar to "The Bank Club" in 2003.

**15. Pioche's First U.S. Post Office and Western Union Office (presently Rainbow Cable)**



Pioche's first U.S. Post Office and Western Union Office building was constructed in 1864 of stone to resist fire. The post

office was established on August 17, 1870. Western Union service commenced in 1873. The front was later remodeled and modernized several times, but in 1985 the owners, the John Christian family, had the front rebuilt to its original design. Over the years, it has served as a café and has housed many other businesses. It is presently used by Rainbow Cable and Cell Phone Sales, a division of the Lincoln County Telephone System network of services.

**16. The Stockum House**

The Stockum House is one of the rare survivors of age and fire in this part of Main Street. It was built in 1866 and has been used as a residence, boarding house, hotel, church and once housed the Francois L. A. Pioche Art Gallery. It is presently a photography portrait studio.

**17. McCannon/Cedar Streets**

McCannon/Cedar Streets are where the first prominent families built prestigious homes, some of which are still in use today. Several of the homes were built by mining bosses, while others were occupied by doctors and lawyers. These streets were considered to be the fashionable place to live in early day Pioche.

**18. The Pioche Record (presently Peggy's Store)**

The Pioche Record is the second oldest continuously printed weekly newspaper in the state, which was started in May 1870. Through the years it has changed owners and editors many times. The newspaper office was located for many years in the current Peggy's Store at 768 Main Street, a building that appears to date from the early 1900s. The Pioche Record is now known as the Lincoln County Record and is headquartered at 197-A Clover Street in Caliente. Two of its most notable editors have been E. L. Nores, who bought the paper about 1920 and ran it for many years; and Thos L. Clay, a retired attorney, who bought it about 1970 and ran it until his death in 1979. More recently, Connie Simkins was the editor for 28 years, from 1979 to 2007. Stephens Media acquired The Record from owner/publisher Raymond Thompson in the fall of 2010.

**19. The Commerce Cottage**

The Commerce Cottage was one of several lending libraries in Pioche that was operated by commercial establishments in the late 1800s. In 1940, the Lincoln County Library system was started with the purchase of this building which had been a jewelry store. It served as a library for 10 years. After a number of years of neglect, this building was refurbished in 1984 to become the Pioche Chamber of Commerce "Commerce Cottage" and Information Center. The Chamber moved to the first floor of the Thompson's Opera House in 2011 and will utilize the Cottage for inventory storage.

**20. The Pioche Hotel**

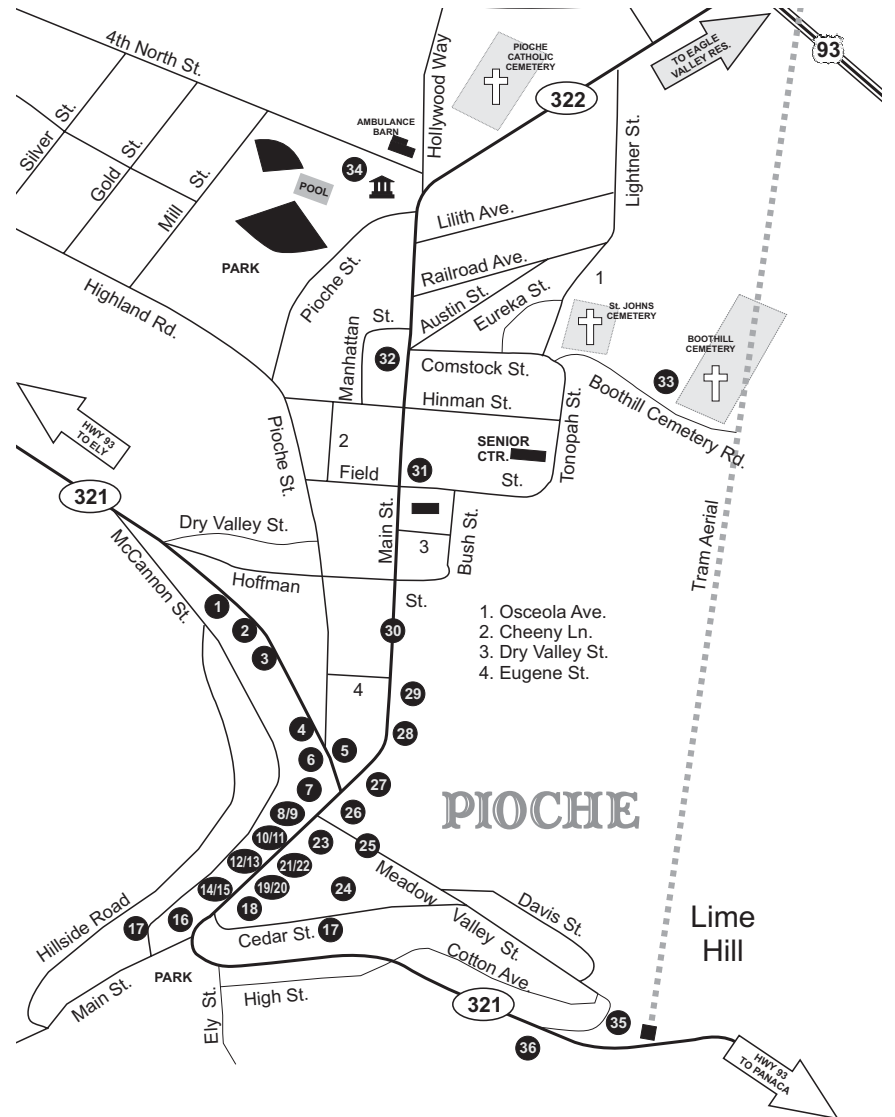
The Pioche Hotel dates from the turn of the century. The hotel was operated by Virginia Cottino and family until the mid-1950s. It is now a private residence.

**21. The Nevada Club**

The Nevada Club generally dates back to the early 1900s. It is on the site of the original Pioche assay office that had been destroyed by a

**TOUR continued on page 6**

**Walking Tour Map and Legend**



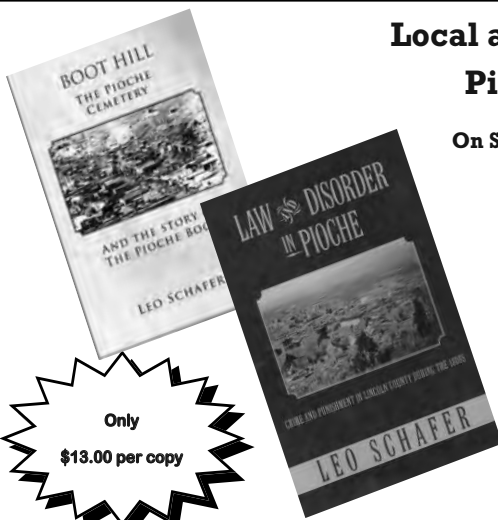
- |  |  |
|--|--|
| 1. The Million Dollar Courthouse                 | 19-20. Commerce Cottage & Pioche Hotel             |
| 2. The Mountain View Hotel                       | 21-22. Nevada Club & Pioche Odd Fellows Hall       |
| 3. St. John's Masonic Lodge                      | 23. Lincoln County Museum                          |
| 4. The Miner's Market                            | 24. Miner's Union Hall                             |
| 5. Commercial Club/Amsden Building               | 25. Meadow Valley Street                           |
| 6. Silver Café & Silver Mine Gift Shop           | 26. Leader Store Building                          |
| 7. Purple Onion Antiques                         | 27. Overland Bar & Hotel                           |
| 8-9. Lincoln County Market & Dougherty's Jewelry | 28. Brown/Thompson Opera House                     |
| 10-11. Bank Club Building & Pioche Mercantile    | 29. Orr Garage                                     |
| 12-13. Pioche News Stand & Stever's Store        | 30. Main Street                                    |
| 14-15. Alamo Club & Rainbow Cable                | 31. Pioche School                                  |
| 16. Stockum House                                | 32. Pioche Town Hall                               |
| 17. McCannon & Cedar Streets                     | 33. Boot Hill                                      |
| 18. Pioche Record                                | 34. Lincoln County Court House                     |
|  | 35. Pioche Aerial Tramway                          |
|  | 36. Treasure Hill (Nevada Centennial Marker No. 5) |

**Local author writes about Pioche's past....**

On Sale at the Following Locations

- A & B Service Station
- Miner's Market
- Overland Hotel & Saloon
- Peggy's Gifts
- Pioche Museum
- Purple Onion Antiques
- The Rag Doll

Published by Book Connection LLC  
Pioche, Nevada



**TOUR continued from page 5**

fire. The present structure is constructed of brick, concrete and stone to reduce the fire hazard potential. The present owner is Larry Gearhart who purchased the bar in 2010.

**22. The Pioche Odd Fellows Lodge**

The Pioche Odd Fellows Lodge was built in 1872 and was originally J. J. Halpin's Hardware Store before he moved his business to Silver Reef, Utah. It has been used for many lodge functions, community dances, parties and social gatherings. The building most recently was purchased in 2010 by Richard Bohlke.

**23. The Lincoln County Museum**

The Lincoln County Museum is housed in the building built by A. S. Thompson around 1900. A victim of fire, it was rebuilt once, then later remodeled in 1929 to make it more modern. Upon the death of Charles Thompson, Sr., the building was sold to James Gottfredson, Sr. and he operated a mercantile and clothing store for a time. Later, the store was closed and the Gottfredson family donated the building to Lincoln County in 1962, to become a museum. Over the years, it has evolved into one of the best museums of its kind in the state of Nevada.

**24. The Miner's Union Hall**

The Miner's Union Hall is presently the Episcopal Church. It is a 3-story wood framed structure with a gable roof. This building was built to fit into landscape and is a typical example of "Plain Early" 20th Century style. The Miner's Union was a center of social activities in this community for nearly 50 years.

**25. Meadow Valley Street**

Meadow Valley Street was the original entry street from Meadow Valley to the south of Pioche's business district. Many of the miners' cabins were located on the southeast end, and businesses flourished on the northwest end. It was one of the main business streets with the Catholic Church, Hanley's Opera House, two livery stables, blacksmith's shop, bakery and dentist office being some of the first businesses located here. A few of these buildings were moved to Delamar in 1894 when that town started booming.

**26. The Leader Store Building**

The Leader Store building is the impressive building on the northeast corner of Meadow Valley and Main Street. It was owned for many years by the Ben Cohen family and operated as a dry goods store. It now houses a used merchandise business. Next door is a massive stone building once used as a bar, the Allen's Cash Store, and a warehouse for the Leader Store business.

**27. The Overland Bar and Hotel Building**

The Overland Bar and Hotel building was constructed in 1940 by Bob Free. It has been burned and rebuilt several times over its colorful past. It originally had a bowling alley in the basement, and the west half was rented to the Allen's Cash Store for more than 30 years. This part is now a dance hall, with an antiques shop up front. Candice and Ron Mortenson have owned the Overland since 1995.

**28. The Brown/Thompson Opera House**

The Brown/Thompson Opera House has survived from its 1873 construction date and was recently extensively renovated. It is entirely constructed of wood and has a classic revival style combined with an early pioneer board construction. It was built by Aleck Brown in March of 1873 and renamed the Thompson's Opera House in April 1892. It was later used as a movie theatre. The Opera House is currently owned by Lincoln County and will be used for public meetings and can be rented for private use. After the new movie house was built, the Gem Theater, the Opera House was used for weekly dances for many years. The Gem Theater showed movies until 2003, when high winds blew the roof off. The roof was repaired, but the owners decided not to reopen because it was more of a community service than a viable business. The Pioche Chamber moved to the Opera House in 2011 to help staff the facility with tours and rental information, as well as continuing to provide tourist area information and souvenirs for sale.

**29. The Orr Garage**

The Orr Garage was built in the early 1870's and was constructed of stone. Its original use may have been as a blacksmith shop or harness shop. In later years, from about 1915, it was used as an auto repair garage.

**30. Main Street**

Main Street runs from the famous Treasure Hill to the current Lincoln County Courthouse. From the days of mud and ruts to its present day concrete walks and asphalt paving, there have been thousands of exciting, tragic, happy, and wonderful events that have occurred along this Main Street. People from all over the world have traversed this small area and were charmed by its charisma. Some have stayed. Many have returned

again and again. With its gun fights and killings, Pioche became known as the roughest, toughest mining camp in the West. Most of this happened on Main Street.

**31. Pioche School**

Pioche School was built in 1909 in a "Mission" style of architecture. This was the oldest continuously used school building in the state of Nevada in 1999 when it was abandoned for a new building, built on the northwest side of town by the Pioche Division of Forestry Honor Camp. The original school building was sold and is now privately owned.

**32. The Pioche Town Hall**

The Pioche Town Hall was built in 1936-37 by the Mormons with donated labor, material and money as the first LDS meeting house in Pioche. It was dedicated in 1950 when it was completely finished and paid for. In 1986 when the new LDS chapel was built, the old building was sold to the Town of Pioche for a public meeting place. Now known as the Pioche Town Hall, it serves many organizations for weekly or monthly meetings, plays, and social events. A noteworthy activity held here is the Labor Day Craft Fair.

**33. Boot Hill**

Crime was rampant in Pioche in the early 1870's. During the first settling of Pioche, it was said that 72 men "were killed with their boots on" before anyone died a natural death. Many of these men are buried in the "Old Boot Hill" Cemetery. A monument commemorating Boot Hill was built and donated by E. Clampus Vitus in 2009.



PREPARING FOR A SUSTAINABLE NEVADA

FOR MORE INFORMATION

702-258-3930

Toll Free 1-866-300-5600

www.snwa.com

Southern Nevada  
Water Authority

**Camp  
Camelot**

AMAZON RANCH

Home of Camp Camelot

Nevada's Premier Resident Equestrian Camp  
For Children & Perfect Family Vacation

Visit us online at  
[www.campcamelot.us](http://www.campcamelot.us)

Labor Day Kids Sleepover &  
Horseback Riding

OR  
775-962-5676

# EARLY DAYS

**IN LINCOLN COUNTY** By Leo Schafer and Ken Meyer

Pioche, and the vicinity around Pioche, offers many wonderful sites to visit. There are several day trips available while staying in Pioche. The following account provides the backdrop for such a trip. One day is ample time to enjoy the site and return to Pioche.

A BLM map is shown herein. From Pioche travel about 70 miles to the intersection of route 318. Take 318 north about three miles and you will see a gravel road to the left, with a gate. This is the gate depicted on the BLM map. The entire trip is easily accessible by automobile, with the exception of the first left-hand side trail that shows the Chakra Sheep and the Giant Sheep. This route is not accessible by car. Logan Springs is approximately a quarter mile, staying with the left fork in the road, past the Shaman Knob trail. Enjoy the trip, and of course bring plenty of water and tell someone where you are going and your return time.

Examining the recent history of this location, about 150 years ago, we would find the area bustling with activity. Miners, would-be miners, prospectors, adventurers, and two governors all visited the area. It was a silver strike. Mr. John Ely was credited with the discovery. The location was about 50 miles due southwest of what is now Pioche; and approximately 100 miles south of what is now Ely, Nevada, on the west side of highway 318. The setting of the activity was generally known as the Pahrangat (Pah Ranagat)

District. Pahrangat National Wildlife Refuge is what we normally associate with the name Pahrangat, but this location is nearly 25 miles to the north of the refuge.

Pioche's silver was discovered at about the same time, but Pioche did not develop as quickly as this district did. The amount of ore thought to be contained here even drew the attention of the United States Congress. This was the first home to civilization in south eastern Nevada. Although discovered by a group from Utah, many of the region's settlers were experienced mining people from Austin, Nevada.

An Austin resident, on the ground in the new district, wrote a letter to a resident in Austin in December of 1865. The letter, in part, reads:

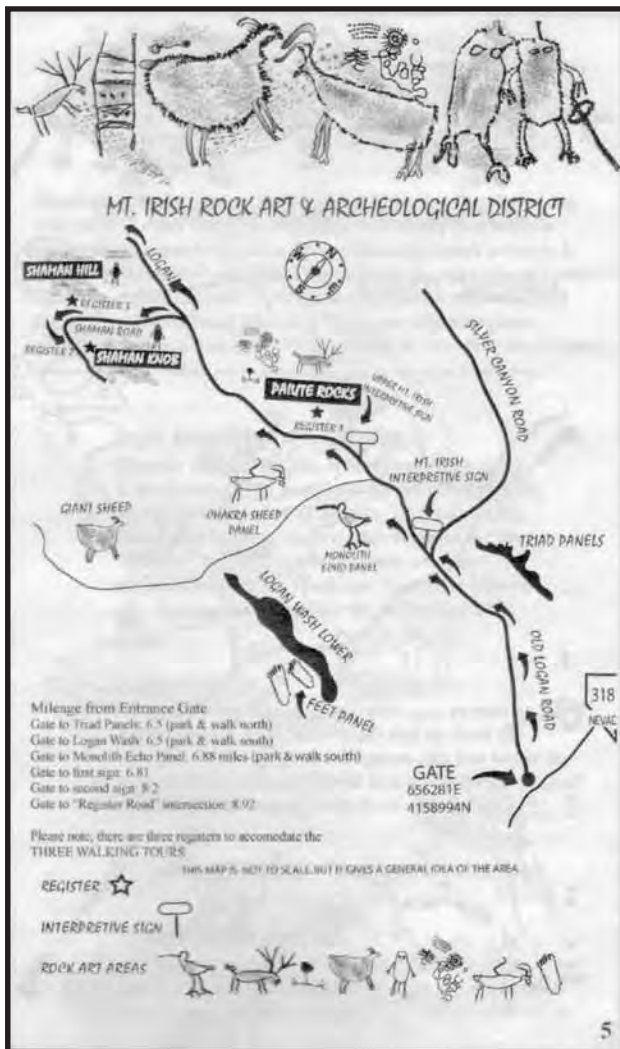
"...I visited some of the prominent claims, and I must say that I found them much finer than I expected. From what I have seen of the country, I consider it one of the best I have seen for prospecting. It is the very country that the Austin people have tried so long to find. The valley is the finest I have seen on the eastside of the Sierra Nevada..."

**A newspaper from northern Utah, in April of 1866 reported:**

"The Pahrangat Silver Mines. From letters written by parties now in the East we learn that these mines are now exciting considerable interest in the New York market, and for the information of all, we will give a few facts regarding them which we obtain from his Excellency, (Utah Territory) Governor Durkee, and others of his party who have just returned from a visit to the above mentioned mines.

"They are situated in the southwestern corner of Utah or the southeastern corner of Nevada, about 400 miles from this city (Salt Lake City)..."

His Excellency must have been impressed because he offered to invest in one of the new properties and claimed authority over the district since it was in Utah. When the Nevada Governor arrived, he claimed the district was in Nevada. The entire area was very much a wilderness and had not yet been surveyed. Of course it turned out to be in Nevada.



It was reported that Investors, from New York and Los Angeles were on the ground. One of the Los Angeles people was Mr. William Raymond who, with his partner a Mr. Appleby, was transporting a mill to the area. That mill would later be moved, and play an important part of Pioche's early mining development. William Raymond and John Ely, the man given credit for Pahrangat silver discovery, became partners and relocated to Pioche. They

**EARLY DAYS continued on page 10**

## Dougherty's Fine Jewelry

**John Linerode**      **Making what's old new again**



**689 Main Street**  
**Pioche, NV 89043**

**New Custom Jewelry**  
**Handmade by John**  
**Unique One of a Kind Items**  
**Beautiful Silver Jewelry with Genuine Stones**  
**Prices starting at \$25.00**  
**Layaways Welcome**





**775-962-5511**  
**702-622-4999**

# STATE PARKS IN LINCOLN COUNTY

Lincoln County is blessed with some of the greenest scenery in Nevada, and also has one of the largest concentrations of Nevada State Parks within a 50-mile radius of Pioche. Three of the first Nevada State Parks were established in Lincoln County, back in 1935 when the State Legislature created the State Park System. The Governor at that time felt that Nevada's economic dependence upon the "big three" of mining, railroads and agriculture had suffered during the Depression years, and tourism was felt to be an important new way to diversify the economy of the state (hmm, does anyone see a correlation to today's economy?). The Civilian Conservation Corps, which had been "born" as a federal jobs program in 1933, built many new roads for the growing number of automobiles traversing the state.

Cathedral Gorge State Park, located 10 miles south of Pioche right along U.S. Highway 93 dated back even further, having been declared a "State Park and Wildlife Refuge" by Governor James Scrugham in 1926. The scenic canyon

park had been a favorite among Lincoln County residents from the 1890's, when its name was changed from "Panaca Gulch" to "Cathedral Gulch" by the wife of Pioche mining engineer William S. Godbe. The cathedral-like spires of the soft mudstone/siltstone formation constantly erode, and deep narrow slot-caves are fun to explore during the heat of summer. The Park hosts several fun events during the fall, most notably the Dutch oven Cookoff which has local chefs competing for prizes as they prepare their best recipes in old-fashioned Dutch ovens. The Cookoff takes place Saturday, Sept. 22, 2012 at the Group Use area by the campground; cooks start preparing their entrees around 3:00 p.m., and the public is invited to

watch, and taste-test the results between 5:00-7:00 p.m. Another long-standing tradition at Cathedral Gorge is the annual visit from the Las Vegas Astronomical Society, whose members have been bringing their telescopes to view the wonders of the dark night skies at the Gorge since 1986. Public viewing nights are scheduled for September 14 and 15, 2012 starting around 7:30 p.m. in the campground.

Beaver Dam State Park (35 miles east of Caliente) was also established in 1935, having been "just off the main road" for the earliest years of its use. The little

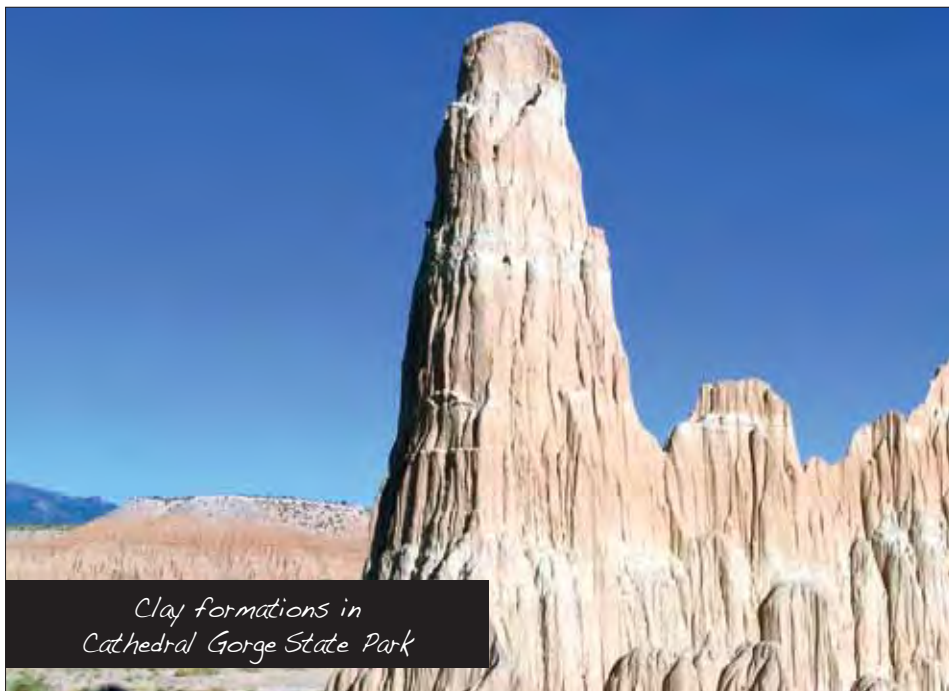
community of Clover Valley (Barclay) was established in 1864, at the same time as Panaca, and families from both of those towns would often go to visit families that lived in Beaver Dam Wash. They would go fishing along the natural stream that was dotted with beaver dams, or just enjoy a picnic under the native cottonwood and willow trees along the stream. In 1935, Civilian Conservation Corps crews spent a lot of time constructing camping and picnicking facilities at Beaver Dam, but the floods in 1937-38 destroyed most of their work. A man-made dam in 1961, Schroeder Dam, controlled the floods, and provided a small lake for fishing; but severe floods in 2004-2005 breached the dam and led to its destruction. The area once again is a natural setting for primitive camping; two developed campgrounds with 30 sites are set among the pinyon and juniper forested setting of Beaver Dam canyon, and a network of trails offer exploration opportunities. While the park lies at the end of 28 miles of graded gravel roads, and is not recommended for travel trailers over 34 ft. length, the park offers some of the best bird and nature-watching opportunities in Nevada. Beavers still build their "lodges" and dams along the stream, and a variety of song and game-birds may be seen, including wild turkeys that were "planted" by Nevada Department of Wildlife in the late 1990's.

Kershaw-Ryan State Park (2 miles south of Caliente) was the third park established in 1935. The Samuel Kershaw

**STATE PARKS continued on page 9**



*Col Miller's Cabin Beaver Dam 1935*



*Clay formations in Cathedral Gorge State Park*

## MINER'S MARKET, LLC

### The Pioche Grocery Store

Locally Owned—Where Locals Shop

Monday-Saturday  
9 AM - 6 PM  
Sunday  
10 AM - 2 PM



663 Main Street  
Pioche, NV  
89043  
775.962.5777

*Fresh Meat . Produce . Dairy . Sundries  
Tobacco and Cold Beer*

## Meadow Valley Pharmacy

Located next to Grover C. Dils Medical Center



Prescriptions, Home Medical Equipment and

Immunizations

We bill all insurances,  
State employees can now fill prescriptions  
For a 90-day supply.

Digital Kodak Photo Processor

775-726-3771

775-726-3685 FAX

OPEN  
Monday-Friday 9AM to 6 PM

P. O. Box 315  
800 N. Spring Street  
Caliente, NV 89008

**STATE PARKS continued from page 8**

family had homesteaded this little canyon in 1870, and had an orchard and garden that was watered by the natural springs that emerge from the base of towering igneous-rock cliffs. After 30 years (and Mr. Kershaw's demise), the canyon was sold to James and Martha Ryan, who did not actually live in the canyon. During their years, local residents would come to picnic and enjoy the shady canyon, and the Ryans decided to donate Kershaw Canyon to the State of Nevada in 1934, to be made into a public park.

The C.C.C. companies developed camping and picnicking sites, a wading pond (from one of the springs), and a caretaker's cabin. Floods in 1984 destroyed most of the manmade features of the park, and it was a 13-year struggle to rebuild and reopen the park in 1997. In 2009, the long-awaited new campground opened. On October 13, 2012, the park will host the second annual "Park to Park Pedal/Extreme Challenge" for bicyclists. This event is not for the casual bicyclist, as participants will rack up 100 miles in a single day of riding, starting at Kershaw-



*Kershaw-Ryan State Park*

Ryan, pedaling north to Cathedral Gorge and Pioche, then east to Spring Valley and Echo Canyon State Parks, and returning to Kershaw-Ryan for a celebratory dinner. Shorter rides will be available, with a 4-mile family ride starting in Caliente, and a 35-mile ride just to Cathedral Gorge and back. In October, the park hosts a "Haunted Hike," and pumpkin-carving; and in December, the annual "Winter Wonderland" is an evening to enjoy the myriad lights and scenes set up around the day use area, with a visit from Santa for all the kids.

Spring Valley State Park (18 miles east of Pioche) started as Eagle Valley Dam, built by Lincoln County in 1965. Eagle Valley Reservoir once covered 65 acres, but has shrunk a little over the years. It provides a good trout fishery, with deep and cold waters that fill the canyon at the southern/western end of Spring Valley. Water is released for ranching in Eagle Valley and Rose Valley, for natural irrigation of the pastures. A campground in Horsethief Gulch was built at the same time as the dam, and the campsites are tucked among the pinyon and juniper woodland.

In 1969, Lincoln County turned over operation of the park to the Nevada State Park System, and the park now includes the pastures, and several of the homesteaders' homes in Spring Valley. One of these, the Stone Cabin Living History Museum, is available for tours, having been renovated in 1995 to its original appearance. A History tour will be offered on Saturday, August 1, 2012 from 1:00 to 2:00 p.m. There is also a trailhead at the Stone Cabin for a 2-1/2 mile trail that ends at the "Ranch Campground," a 6-unit "dry" campground near the park headquarters, the old 7-L (Hollinger) Ranch. The graded gravel road continues beyond the 7-L Ranch to become the "Mt. Wilson Back-country

Byway," which loops back around to Highway 93 about 60 miles later. High-clearance vehicles may enjoy this road in the summer months; it is often snowed in by November.

Echo Canyon State Park (12 miles east of Pioche) also started as a county park, when Echo Canyon Dam was built in 1969. Its campground amenities were identical to those at Spring Valley, except for lacking showers in the restrooms, or power to keep the restrooms heated and open through the winter months.

The lake is an ideal "warm water" fishery, for bass and crappie, and also a good location for finding "trophy size" bullfrogs (when the Great Blue Herons don't beat you to the catch). Another feature of this park is that all portions of the shoreline may be reached by vehicle (Spring Valley has only one side of the lake accessible by car, and by scrambling down a hillside). It is also less crowded than Spring Valley, and is the best location near Pioche for seeing ducks and shorebirds. Echo Canyon hosts an annual kids' fishing derby on the second Saturday in June, with great prizes and giveaways; the Ranger often hosts a "Green Chili Cookoff" over Labor Day weekend to raise funds for this event.

The newest addition to the State Park System in Lincoln County is the Elgin

One-Room Schoolhouse State Historic Site. This original schoolhouse was restored by the family whose member built it in 1922 to educate the schoolchildren of ranchers and railroad workers in lower Rainbow Canyon. At this time, there was no "bus service" as we know today, and the children needed to be educated closer to their homes. By the 1960's, bus service was increasing, and the number of families living in Rainbow Canyon decreased – so the school closed after the last Bradshaw child finished 8th grade.

In 1998, one of the Bradshaw family members decreed in his will the wish to see the schoolhouse restored; and in two short years, it was dedicated by the Bradshaw families and friends that funded the restoration. In 2005, the Bradshaws donated it to the Nevada State Park system for operation and maintenance. The flooding down Rainbow Canyon in January, 2005, and again in January, 2010 (after the road was repaired) has limited access for the present; check locally for road conditions.

We welcome you to explore and enjoy the Nevada State Parks!



*Congressman James Scrugham  
Cathedral Gorge dedication 1935*

Real Estate

Lincoln County Specialist

**REALTY ONE GROUP**  
*A Team of Professionals*

**Janet L. Leedham, CRS**  
*Certified Residential Specialist*

**Cel: (702) 219-1990  
Dir: (702) 645-2897  
Fax: (702) 655-9200**

**1333 N. Buffalo Dr.  
Suite 190  
Las Vegas, NV 89128  
RealtyOneLV.com**

**JLeedham@RealtyOneLV.com**

**Email: [jleedham@earthlink.net](mailto:jleedham@earthlink.net)**

**EARLY DAYS continued from page 7**

would later figure prominently in Pioche's mining boom.

The Pahranaगत District continued and people came in; equipment came in; money came in, but little went out except enthusiasm. A well known and experienced prospector, Joseph Todd, traveled from Austin, Nevada to take a look.

**JOSEPH TODD:**

"Since I have arrived in this God forsaken country I have had very little time to examine it, but what I have seen leads me to believe it is a 'bilk.' But I will give it a square prospecting, and then report the result..."

Eight days later Todd had given the district a square prospecting, and then reported the result.

**TODD:**

"I will give you my opinion of this country by saying, that we are beautifully bilked. There is not a mine here that I would have as a gift... Talk of crazy men and fools; there is the largest collection here that fate ever brought together in one place. We have been badly sold and I hope others will profit by our experience..."

Pahranaगत resident, W. T. Nichols, apparently was not favorably impressed with Joseph Todd or his associates.

**THE AUSTIN NEWSPAPER MAY 19, 1866:**

"...Mr. Nichols was not delighted with the party of Austin boys (Bell, Brooks, Todd and Grant) whose ways were somewhat uncouth; and he says they 'were helped to get away by the people here for a little fort down south called Prescott.'"

**A NEWSPAPER PUBLISHED AT CAMP DOUGLAS, UTAH UNION VEDETTE, REPORTED ON JUNE 6, 1866:**

"The following details respecting a new incorporation for working renowned silver lodes in Nevada will without doubt be read with interest. The plan proposed by the 'International Pahranaगत Silver Mining Company' is one stamped with honest and legitimate propositions, and cannot fail for want of success. Sufficient information has reached us to warrant our belief in the extraordinary existence of metallic wealth in that district. As an incentive for those disposed to invest in mining enterprises, none present better terms or more certainty for a speedy return of the capital invested and with large dividends for time to come."

Favorable information about the district circulated freely. A Pahranaगत resident wrote a letter to the Union Vedette. He simply signed the letter "Miner."

**MINER:**

"...now the truth is the loads referred to have not been touched in the last three months, nor is anyone acquainted with one in either lode eight feet below the surface of the ground. As to the mill, the entire gross proceeds from the same since it first started to present time has not been sufficient to pay the salary of one man who superintends the working ore. This may not be attributable to the lack of ore in the mine; the mill is a piece of botch work and the workings of the mine no less so... The fact is the mines are not managed by skillful men, or else they are restrained from doing the work properly by their employers, who in all cases in this district know very little about conducting mining operations... Out of some 1,700 claims located in this district, it will be fortunate if one in a hundred proves rich to the owners..."

**THE AUSTIN NEWSPAPER, REESE RIVER REVELLE, REPORTED ON JUNE 9, 1866:**

"...Although the district has been discovered upwards of two years, there is but one solitary instance where an excavation has been made in a real or supposed ledge eighteen inches below the surface..."

Another resident had observation on the economy of the district.

**MR. BOREAS:**

"...The currency in this country is jaw-bone. The Superintendents get jaw-bone for their pay, and they in their turn give the miner jaw-bone, and the miner trades jaw-bones for whiskey; the whiskey seller trades jaw-bone to his boarding house, and the landlord gives jaw-bone for beef and flour—it is good currency as

long as it lasts, but I think the man at the latter end is bound to lose his grip..."

**A CALIFORNIA NEWSPAPER, THE SAN BERNARDINO GUARDIAN, HAD INFORMATION REGARDING THE DISTRICT:**

"...a party from there reports that a sale of large interests in Pahranaगत has taken place in New York... amounting to \$3000 [at today's value of money approximately \$75,000] It is reported that operations will at once be commenced and conducted in the most thorough manner..."

The circumstances and timing of this sale, at a relatively low price, suggests that this may have been people that had been on the ground dumping the property before the bottom fell out.

**U. S. MINING COMMISSIONER ROSSITER W. RAYMOND LATER COMMENTED (NO KNOWN RELATIONSHIP TO WILLIAM RAYMOND).**

"The developments in this district are both costly and expensive, but have been conducted with such conspicuous absence of skill and common sense, that they may be said to have produced hardly any results whatever..."

Later Commissioner Raymond reported that he estimated that over \$900,000 had been invested to return approximately \$20,000 in ore.

The county seat for Lincoln County had been located in two different locations within the district, but after the demise of the whole operation the county's headquarters was moved to Pioche. Three Post Offices were established in the district during the boom. One of these was located in Logan Springs of which there is a photo, herein, taken in 1871 (also included is a photo of the tramway to Illinois Mine and Hiko Mill, both photos were taken in 1871). A visit to the former town of Logan Springs can be interesting, but in this case getting there is half the fun.

The road to Logan Springs passes through the Mount Irish Rock Art and Archaeological District. The location has abundant petroglyphs. These are thought to be perhaps 1000 years old. There is petroglyph of a stick figure of a man that is reported to be unique to the Pahranaगत valley. There is no

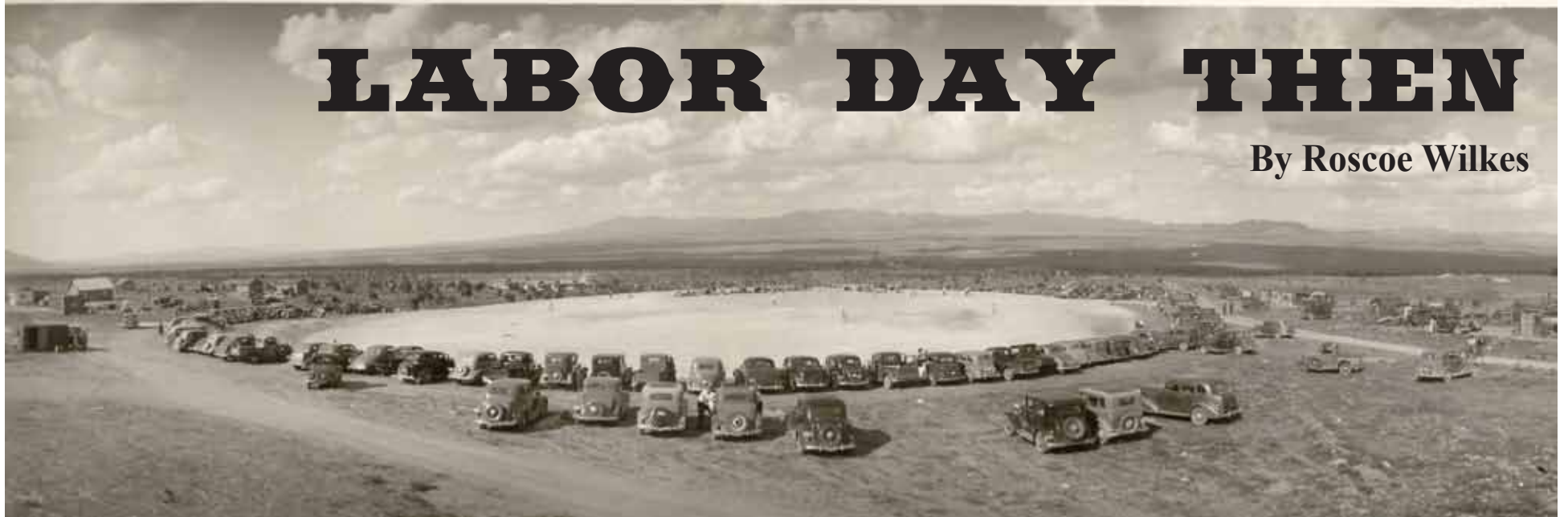
known reason for this. There are many interesting examples of rock art in the area; remember take only photographs.

**HOO LIHAN'S EXCAVATING, INC.**

UNDERGROUND SPECIALIST  
652 MIDDLEGATE ROAD HENDERSON, NEVADA 89015  
(702) 564-1480  
FAX 564-7024

# LABOR DAY THEN

By Roscoe Wilkes



By this paper there is no intent whatsoever to deride Labor Day as it is celebrated today. In fact, to me the ones in charge are doing a great job. My purpose is only to go back, way back, and refresh recollections as to how it was then in the late 20's and early 30's.

Pioche, Nevada in 1929 was a unique town of 600 people. It was different, as it is yet today. After Pioche was made the mold was thrown away. There is no other place in this wide world quite like it, and to those who "really know" Pioche love it. It has a charm, hard to explain, but definitely a charm.

In 1929, give or take a few years either before or after, Pioche celebrated Labor Day with an intense vigor, the effort was all out, no holds barred. I hope I can describe it accurately. It deserves an honest portrayal. To give it less would be a travesty, if not a crime. As one of the very few people remaining from back then I will give it my best shot, bear with me.

It always started with the "Sunrise Salute." I will not hazard a guess as to how many sticks of dynamite or perhaps boxes Theodore Johnson took to the top of Lime Hill and set off as dawn was breaking. He took enough that the vibrations shook the town, and I don't mean figuratively, I mean literally. You could feel it as your bed shook, and the sound, it was there in full force. There was no doubt in anyone's mind it was "Labor Day."

I do not recall there being community breakfasts as done today. If there were such, I don't recall it. In mid-morning there were children's sports followed by adult sports all taking place on LaCour Street from the corner garage to the courthouse.

Did the town's boys and girls look forward to the "Children's Sports?" I will say that they did and with a passion. There were so many events and for all ages from the very small to the upper teens. Dive into tubs full of white flour to retrieve the quarters, nickels and dimes in the bottom of the tubs. Then with face covered with white flour go to the pie eating contest where a juicy blueberry pie awaited your fast eating, so long as no hands were used. The winner got a quarter, all others got a dime. There were no losers. There were foot races, three-legged races, pillow fights and more. All that was necessary was to participate, and a boy or girl could come away with a handful of coins, this whether you won anything or lost.



The adult sports were also varied. My recollection brings to mind two events that stood out, the 100 yard dash and the women's nail driving contest. A good footrace is always of interest. Glen Roeder won it for some number of years in a row, he was fast. Then Sam Graham came to town and took Glen down by a couple of yards. Time, out of shape and age caught up with Glen. He ran no more.

**LABOR DAY THEN continued on page 12**

## JIM WILKIN TRUCKING LLC

**Sand & Gravel   Redi-Mix Concrete   Construction**

**One Mile South of Intersection**

**Hwy 93 & 319 on US Hwy 93**

**Panaca, NV 89042**

**Serving Lincoln County since 1972**

**Managers: Jim & Lorin Wilkin**

[www.jwtruckingllc.com](http://www.jwtruckingllc.com)

**775-728-4770**

## RAINBOW CABLE

**Cable TV for all Lincoln County**

**735 Main Street**

**Pioche, NV 89043**

**775-962-5111**

**Toll Free Within LC County 1-888-287-0702**

**LABOR DAY THEN continued from page 11**

The women's nail driving contest caught my eye. A large timber about 12 inches square and 10 feet long was placed on saw horses. Each lady was given five long nails and a regular hammer: Who would drive- all five nails into the timber first? It was no contest. Ma Steward swung her hammer much like a professional carpenter, with weight from her shoulders landing force to every swing. Ma had all her five nails in deep while the other ladies were tap, tap tapping away at No. 1.

Pioche being a mining town, pure and simple, the Labor Day mining events held a prominent spot in the day's program and were much anticipated and eagerly watched. There were several events, two of which commanded wide interest: "mucking" and "single jacking."

If you are uninformed "mucking" means "shoveling." A one-ton ore mining car was placed in a prominent spot for viewing. Alongside of the mining car was a substantial pile of muck, consisting of mixed sand, gravel and dirt. Each contestant was, in his turn, given an empty mine car, a shovel and the muck pile. Rex Bentley stood by with a stopwatch in hand, close by and watching. At the ring of the starting bell, the mucker, usually with shirt off, attacked the muck pile in deadly earnest, shovel full after shovel full as fast as his energy level and strength would permit. As the muck in the ore car was getting to the nearly full level, Rex would with his right hand smooth it out level to make sure the car was level full when he clicked his stopwatch. This event required great endurance and strength. The contestants had it, obtained by their every day doing so down in the mine.

The single jack contest. Again if you are uninformed, a single jack is much like an ordinary hammer except that the head is a "sledge," a large piece of "heavy" forged steel with a wooden handle inserted. For the contest, along with

a single jack, was a large piece of granite rock about 4' x 6' x 6', mounted on the back of a truck or a to-boy and a piece of one-inch diameter octagonal steel about eighteen (18) inches long. The steel was sharpened, like a chisel, on one end. The other end was flat to be pounded on by the single jack.

The contestant, with the steel in one hand and the single-jack in the other, would pound the steel into the granite rock against the stopwatch, i.e., being timed. So you know, with each blow of the single jack, the steel would need to be rotated with the other hand so as to chip out little pieces of the granite. When the allotted time was up and the stop bell was rung, the hole would be measured for depth to ascertain the winner.

I can see it now. Owen Walker would at the start strike the steel into the rock dry for maybe a dozen or so blows. He would then say: "Water." A man standing by with a hose would commence the, running of a small amount of water into the hole. With each blow, at the beginning, water would splash onto Owen's shirt and face, not important, the heavy blows would continue, each blow accompanied by a noticeably loud grunt from Owen. Owen Walker hit that steel hard and fast. It took great strength to keep it going. Owen had it. He was "all man." No one ever beat Owen. With others the completed hole might measure 8 to 10 inches. With Owen it was more like 12 inches. He was never defeated.

At noon or thereabouts one would see Claude Cole behind a little counter cutting beef from a big roast and making generous sandwiches on buns. Additions were there as one chose. All of it free, no charge, and come back again if you could handle more. All in all a delicious treat and a break during a busy, busy day.

Early afternoon- saw the start of the baseball game. I recall

several Pioche vs. Panaca games. Pioche had Speck Dolan who as the team's pitcher had a fast ball, immense. It was fast enough that Tuffy Cline, catcher, would buy a piece of round steak, place it in his left hand before slipping it into the catcher's mitt, this to keep his hand from being burned or beat up. I recall players, Dan Franks, Ikey Orr and others.

Yet in spite of Speck's fast ball they were not a match for Panaca. That Panaca outfit was just plain flat out too tough. They had the Ronnow boys and the Lee boys and others. Bud Ronnow was their left-handed chucker with Kenneth Lee behind the plate (catcher). Don't try to steal 2nd base on Kenneth, you won't make it. Adding Bill Ronnow, Charlie Ronnow, Lorrin Ronnow, Keith Lee and Ted Deck made for a formidable bunch.

I must mention Ted Deck (1st base)., Ted was a man of good size, handsome as all get out, a neat man, and how he could clobber that ball. Most every game I ever saw with Panaca in it, Ted put one "out of the park". Big and strong Ted swung hard every time. Ted left some grandsons who have carried on those athletic traits, the Rippetoe boys of Panaca.

The ballgame over, let us retire to upper Main street, to the area inside the turn at the top of Main. There the ring was set up for spectacular boxing. Ira "Gummie" Van Ausdale was undefeated if my memory is correct. Also worthy of mention was Art Bernard and Pat Callahan. Pat was at age 51 still punching it out with the younger bucks on an even basis. Rumor had it that Pat Callahan formerly of Butte, Montana, once lasted 7 rounds in a bout with the then light-heavyweight world champion. I remember Ma Steward in the ring vs. Daisy Cunningham, two big ladies duking it out - - - would you believe it.

**LABOR DAY THEN continued on page 13**

## **ST. JOHN LODGE, PIOCHE, NEVADA RECEIVES NATIONAL AWARD FOR EXCELLENCE IN EDUCATION AND COMMUNITY PROGRAMS**

Silver Spring, MD. – The Masonic Information Center (MIC) awarded St. John Lodge, Pioche, NV, one of just 18 national Mark Twain Awards for demonstrating excellence in Masonic activities. The Award recognizes St. John Lodge's planning, performance, and assessment of activities that both invigorate Freemasonry's identity throughout the community and enrich the quality of educational and fraternal experiences within the Lodge. During the past six years, the MIC, the information bureau of the Masonic Service Association of North America (MSANA), has presented the Mark Twain Award dis-

inction to more than 100 Lodges across the continent. MSANA is headquartered in Silver Spring, MD. Lamar Walters, St. John Lodge master during the award year, said, "Our membership is small, so, we know that winning a Twain Award is a major accomplishment." Walters adds, "Our Lodge members travel 200 to 450 miles to meetings, but we have the determination to learn about our Fraternity and to share our great Masonic heritage." "Our Lodge members came together as a committee of the whole to focus on achieving the goals of the Twain Award," said Mike Reinhardt, St. John Lodge senior warden. "Our members enjoyed showing the community what Masonry means by sponsoring events, including a fundraiser for scholarships and teacher supplies, a high school essay contest, Bikes for Books program, and an elementary school picture book



**MASONS continued on page 14**

### LINCOLN COUNTY TELEPHONE

SYSTEM, INC.

For all your communication needs

[www.lctsys.com](http://www.lctsys.com)

747 Main Street

P. O. Box 150

Pioche, NV 89043



775-962-5131

800-340-4131

Inside Lincoln County Dial 611

**LABOR DAY THEN continued from page 12**

By the time the fights were over it was beginning to get dark and not too far away from the ballpark again and the fireworks. Ben and Joe Cohen donated the fireworks as a goodwill gesture from their "Leader Store." Their building still stands, across the street from "Tillies."

We are not through yet. At 9:30 everyone would proceed to the grade school gymnasium for the "Labor Day: Dance," a function that saw that building "packed." And why not with that outstanding Wilcox Orchestra playing all the popular tunes with a perfect beat for dancing. Frank "Prof" Wilcox, piano; Evan (Cooney) Edwards, big bass horn; Don Ashworth, drums and singing "I Cried for You." Mel Cowley was an outstanding trumpet. Carlyle Wilcox, Tuffy Cline and Glen Roeder composed a fine sax section. One woman once remarked in my presence: "Seven men who make it sound like fifteen." She was right. How fortunate Lincoln County was to have that orchestra for many years.

It would be nice to do it all again. It was a day never to be repeated in that same fun-filled way.

# LABOR DAY NOW



**MASONS continued from page 12**

contest.” Lodge Junior Warden Robert Eldridge said, “We held an Open House as a part of a statewide event that welcomed visitors to Masonic Lodges.” Eldridge added, “This year’s participation in the Twain Award has prompted our members to become more active and enthusiastic not only with regard to the activities with the community, but also within the Lodge as well.” George Braatz, executive secretary of MSANA, said, “There are some 10,000 Lodges across North American, and St. John Lodge should be very proud of being selected part of the elite group of Mark Twain Award winners this year. The Twain Award encourages Lodges to make Freemasonry relevant to the diverse

backgrounds and ages of its members and its communities. Lodges, like St. John, are making significant contributions to the growing interest in Masonry that we see throughout North America.” Winners receive a custom designed award and nationwide recognition through the MSANA web site and print publications. Most historians believe Freemasonry arose from stonemasons’ guilds in the Middle Ages and began to flourish in the 1700’s in Europe, the American Colonies, and Canada. Today, North America’s Masonic Fraternity provides fellowship and service for more than 1.4 million members. Masons are known for their commitment to making good

men better and doing good works. See [www.msana.com](http://www.msana.com) for more information.



# GOING FOR A DRIVE IN THE DIRT

The 2012 Golf season is now in full swing at the Lincoln County Golf Course located on Pioche Parks & Recreation Land off SR322 at mile-marker 2 (there is a sign at the road entrance). Association Membership is \$25.00 a year, but everyone is welcome and encouraged to play. There is no set fee, but a suggested minimum donation of \$5 per round will be gladly accepted. We have no paid staff, therefore the course is improved and maintained completely by volunteers and all donations and fund-raisers go entirely into improvement at the course. Please call 775-962-5206 or 775-962-1107 for more information. Our summer league started the latter part of April, and we encourage anyone who enjoys the game to please join us in a summer of fun (Please call 775-962-5251 for league play and info). The course is a 9-hole executive course with 7 par 3 and 2 par 4 holes (par 29) with a total length of 1,656 yards. All greens and tee boxes are of artificial turf with 5 of them surrounded with an artificial fringe, the other 4 have landing zones of grass.



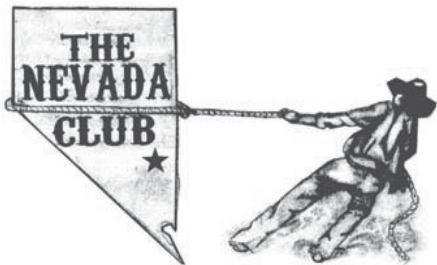
This grass is maintained by a gravity flow sprinkling system. The goal for our course is to be a model for what low maintenance golf can be without just playing on dirt. Constructing and maintaining grass greens and tee-boxes is prohibitively expensive and labor intensive for small, remote communities, so we settled on a nine-hole executive course with the latest technology in artificial turf greens. We have special rules for the dirt fairways: mats or tees are allowed and winter rules are in force. The ball can be moved up to two club lengths in the rough (which is really rough), but no aids such as tees or mats can be used, although if a handy weed or tuft

of grass happens to fall within those two club lengths, the players are allowed to place the ball upon them.

The course is a work in progress, and we are so proud of our accomplishments to date. This year our main goal was to get

power and water to our main site, which is now complete. Later in the year we hope to work on a permanent structure with bathroom facilities. We also have bought new turf for

**DRIVE IN DIRT continued on page 16**



**Uptown Pioche**  
738 Main Street  
Pioche, NV 89043

**Happy Hour**  
Monday—Friday  
4 PM - 6 PM  
**Bud Lite**  
and  
**Miller Lite**  
**On Tap**

775-962-5170

## McCROSKY'S "Y" SERVICE

SHELL MINI MARKET - VIDEO SLOTS

**TIRES BATTERIES LUBE SERVICE**

**BODY & FENDER WORK**

Serving Lincoln County for the  
Past 49 years!



33 US HWY 93  
Panaca, NV 89042

775-728-4461



# PIOCHE BIBLIOGRAPHY

A Yankee trader in the gold rush; the letters of Franklin A. Buck. Compiled by Katherine A. White ([http://lcweb2.loc.gov/cgi-bin/query/r?ammem/calbk:@field\(DOCID+@lit\(calbk067div138\)\)](http://lcweb2.loc.gov/cgi-bin/query/r?ammem/calbk:@field(DOCID+@lit(calbk067div138)))).

Boot Hill, The Pioche Cemetery and the Story of the Pioche Boom; by Leo Schafer; Book Connection, LLC, Pioche, Nevada; 2008; 196 pp.

The Complete Nevada Traveler; by David W. Toll; Gold Hill Publishing Co., Inc.; 256 pp., 2008.

IDig Pioche, Historic Pioche Nevada; Compiled by Corinne Fullerton Shumway and Peggy Draper Hone; Published by the Pioche Historical Society, 2005, 462 pp.

Pioche Chamber of Commerce web site, [www.piochenevada.org](http://www.piochenevada.org).

Greater Lincoln County Chamber of Commerce web site, [www.lincolncountynevada.com](http://www.lincolncountynevada.com).

Nevada Ghost Towns & Mining Camps by Stanley W. Paher; Howell-North Books, Berkeley, California, 1970, pp. 290 to 308.

The Sagebrush Ocean, A Natural History of the Great Basin by Stephen Trimble; University of Nevada Press, Reno and Las Vegas, Nevada, 1989, 248 pp.

Nevada Historical Marker Guidebook, Third Edition; Edited by Dave Basso; Nevada Publications, P.O. Box 15444, Las Vegas, Nevada 89114, 1986, 128 pp.

The Backyard Traveler Returns, 62 Outings in Southern, Eastern and Historical Nevada; by Richard Moreno; Published by Carson City Children's Museum, 1992, 262 pp.

Nevada's Weather and Climate; by John G. Houghton, Clarence M. Sakamoto and Richard O. Gifford, Special Publication 2, 1975, Nevada Bureau of Mines and Geology, Mackay School of Mines, University of Nevada Reno, 78 pp.

Shrubs of the Great Basin, A Natural History; by Hugh N. Mozingo, drawings by Christine Stetter; University of Nevada Press, Reno and Las Vegas, 1987, 342 pp.

Nevada, A History of Changes; by David Thompson, A Publication of the Grace Dangberg Foundation, 232 pp.

Forty Years in the Wilderness, Impressions of Nevada 1940-1980; by James W. Hulse, Nevada Studies in History and Political Science No. 22, University of Nevada Press, Reno, 1986, 141 pp.

An Interview with Gue Gim Wah; An Oral History conducted and edited by Robert D. McCracken, Lincoln County Town History Project, Lincoln County, Nevada, 77 pp. <http://www.lsndocuments.com/Ethnography/wah.pdf>

Driving and Walking Tours of Lincoln County Nevada.com, published by the Greater Lincoln County Chamber of Commerce with a grant from the Nevada Commission on Tourism, 34 pp.

Geology of the Great Basin by Bill Fiero, University of Nevada Press, Reno, 1986, 197 pp.

Nevada Map Atlas; Nevada Department of Transportation, 1263 South Stewart Street, Carson City, NV 89712, 775-888-7000, [pio@ndot.state.nv.us](mailto:pio@ndot.state.nv.us), [www.nevadadot.com](http://www.nevadadot.com).

Nevada Department of Wildlife, <http://www.ndow.org/>.

Bureau of Land Management, [http://www.blm.gov/nv/st/en/fo/ely\\_field\\_office.html](http://www.blm.gov/nv/st/en/fo/ely_field_office.html).

Nevada Division of State Parks, <http://www.parks.nv.gov/>.

Nevada Commission on Tourism, <http://travelnevada.com/>.

Treasure in the Hills; Families of Pioche, Nevada & Nearby mines, ranches & valleys; Compiled by Corinne Fullerton Shumway; Published by the Pioche Historical Society, 2007, 539 pp.

Treasure in the Hills, Families of Pioche, Nevada & Nearby mines, ranches & valleys, Volume II; Compiled by Corinne Fullerton Shumway; Published by the Pioche Historical Society, 2009, 362 pp.

Geology and Mineral Deposits of Lincoln County, Nevada, Nevada Bureau of Mines and Geology Bulletin 73; by C.M. Tschanz and E.H. Pampeyan, Mackay School of Mines, University of Nevada, Reno, 1970, 188 pp.

Law and Disorder in Pioche; by Leo Schafer, Book Connection, LLC, Pioche, 2009, 216 pp.

## Group Visits to Pioche

The Pioche Chamber of Commerce welcomes your group to our town. In addition to the varied outdoor recreation available in Lincoln County, the Chamber is pleased to provide the informational tours and possible discounts for your group. Town Tour — Guided tour of Pioche

A local resident will meet your group of 10 or more at different locations in town to provide information and answer questions. There is no charge, but donations are always gratefully accepted at both the Lincoln County Museum on Main St and the Courthouse Museum. Note: the Chamber cannot provide transportation. Discounts — Retail businesses may provide discounts especially for your group.

## A & B SERVICE

Mike Phillips, Owner

**24 Hour Wrecker Service**

<b>Gasoline</b>	<b>Oil &amp; Lube Service</b>
<b>Diesel</b>	<b>Tune-Ups</b>
<b>Tires</b>	<b>Brakes &amp; Shocks</b>



**346 LaCour Street  
Pioche, NV 89043**

*Serving Pioche since 1944*

**775-962-5822**

## EAGLE VALLEY RESORT, LLC

**12555 Resort Road, Pioche, NV 89043**

**775-962-5293**



**Join us for our Labor Day Fishing**

**Tournament - PRIZES & RAFFLES**

**"HEADS or TAILS" Band playing**

**Fri., 8/31/12 & Sat., 9/1/12**

**Stay a Day—Stay a Year**

**DRIVE IN DIRT continued from page 15**

3 of our older greens that need to be replaced and we hope to get it installed soon. Anyone willing to help with these projects, it would be appreciated very much.

Our first fund-raiser of the year was our annual steak dinner - it was held on June 9 and consisted of boneless rib-eye steak, dutch-oven potatoes, green salad, dinner rolls, a drink and home-made peach cobbler. We had a great response and we will hold this fund-raiser again next year, so mark it on your calendars.

We are now getting ready for our Labor Day activities, which will be our annual 'Do-it-in-the-dirt' golf tournament (#12) that will be held on Saturday, Sept. 1; tee-off times will be 7AM and 9AM and will be a 4-man Scramble, Fees are \$20.00 per person (includes a 2012 t-shirt), you can call Peggy at 962-1107 for an early tee time. Also, on Sunday, Sept. 2, will be our annual auction - this is always great fun and a great opportunity to pick up some great bargains. Remember, all proceeds from these go into course improvements so we do need you support.

# PIOCHE PROFILE

Much in contrast to its colorful past, today Pioche attracts new residents with its friendly, picturesque hometown appeal. Pioche is the Lincoln County seat; the courthouse is a prominent fixture of the town. With full amenities, Pioche offers good food, lodging, shopping, automotive and emergency services. The town's recreation center includes park and picnic facilities, a swimming pool and a baseball diamond. A 9-hole golf course, with artificial turf T-boxes and greens, is located 2 miles north of town at mile-marker 2 on SR322.

Pioche has two parks. The Mining "pocket" park is located at the upper end of Main Street, where the Business route from Highway 93 comes into town. It has a bandstand with a bench, overlooking a mine tunnel replica. The main town park is at the lower end of Main Street, by the new Courthouse. It has a baseball field, large grassy play area, a large picnic shelter with cooking areas, and playground equipment. This is where the Labor Day celebration events are held, including the mining/drilling competitions. The town swimming pool is located on the other side of the baseball field, and is open only during summer months.

The town's free R-V Park is located across the street from the swimming pool; six pull-through sites are available for short-term stays (less than one week). Water and sewer are available, no electricity, and a donation is requested for use. No restroom facilities are provided at this RV park. There are two commercial full-service RV parks for those wanting or requiring all the amenities.

With a population of about 800, Pioche is the northern-most community in Lincoln County. It is located 175 miles north of Las Vegas on U.S. 93 at 5,500 to 6,200 foot elevation in the high desert of southeastern Nevada. The relatively high elevation and location out of the rain shadow of the Sierra gives the town an invigorating 4-season climate. Average climate data:

- July average high, 89 degrees F.
- January average low, 21 degrees F.
- Annual rainfall average, 13.5 inches
- Annual snowfall average, 44 inches.

# COMMUNITY RESOURCES

**Restaurants**

Historic Silver Café . . . . . (775) 962-5124

**Lodging**

Hutchings Motel . . . . . (775) 962-2853  
 Motherlode Motel . . . . . (775) 962-5159  
 Overland Hotel . . . . . (775) 962-5895  
 Wright's Country Cabins . . . . . (866) 810-7303

**RV Parks**

Eagle Valley RV Park . . . . . (775) 962-5293  
 Pioche RV Park . . . . . (775) 962-3992  
 Roll Inn RV Park . . . . . (775) 962-5566

**Transportation**

**Major Highways**

From Las Vegas I-15 northbound to U.S. 93 north  
 From Ely U.S. 93 southbound  
 From Salt Lake City to Cedar City I-15 southbound  
 To UT SR-56 to NV SR-319 to U.S. 93

**Airport Service**

Lincoln County Airport . . . . . (775) 728-4409  
 Lighted, paved runway, 4800 feet long  
 12 miles south in Panaca

**Bus Service**

Lincoln County Transportation . . . (775) 728-4477

**Education**

Pre-school/ . . . . . (775) 962-5832  
 Elementary School K-6  
 Junior High School . . . . . (775) 728-4655  
 Students bus to Panaca, 12 miles south  
 High School . . . . . (775) 728-4481  
 Students bus to Panaca, 12 miles south

**Utilities**

Pioche Public Utility . . . . . (775) 962-5840  
 Solid Waste — NWS Crestline . . (775) 728-4333

**County Government**

Lincoln County Clerk . . . . . (775) 962-5109

**Taxes**

Lincoln County Assessor . . . . . (775) 962-5890

**Police**

Lincoln County Sheriff . . . . . (775) 962-5151

**Telephone**

Lincoln County Telephone Co . . . (775) 962-5131  
 www.lctsys.com  
 WUE Inc. (cell phone service) . . . (775) 962-5161

**Cable TV**

Rainbow Cable . . . . . (775) 962-5111

**Internet**

Lincoln County Telephone . . . . . (775) 962-5131

**Medical**

Grover C. Dils Medical Center . . . (775) 726-3171  
 25 miles south in Caliente  
 Caliente Clinic . . . . . (775) 726-3121  
 Steven Klomp, Dentist . . . . . (775) 728-4432  
 12 miles south in Panaca  
 Lincoln County Ambulance . . . . . 911  
 Shannon Kirchesch, Masseuse . . . (775) 728-4325  
 Panaca  
 Lincoln County Physical Therapy (775) 726-3117  
 Caliente  
 Meadow Valley Pharmacy . . . . . (775) 726-3771  
 Caliente

**Churches**

Berean Baptist . . . . . (775) 962-5886  
 Bible Talk Comm. Church, Panaca (775) 728-4734  
 Christ Church Episcopal . . . . . (775) 962-5835  
 Holy Child Catholic, Caliente . . . (775) 726-3669  
 LDS, Pioche Ward . . . . . (775) 962-5469  
 United Methodist Church, Caliente. (775) 726-3665

**Newspaper**

Lincoln County Record . . . . . (775) 726-3333  
 Caliente admin@lincolncountyrecord.com

**Other Community Services**

Pioche Senior Center . . . . . (775) 962-5378  
 (serves lunch daily)  
 Pioche Chamber of Commerce . . . (775) 962-5544  
 www.piochenevada.org  
 Lincoln County Chamber of Commerce  
 www.lincolncountynevada.com . . (877) 870-3003  
 Lincoln Links Golf . . . . . (775) 962-5206  
 Retired Senior & Volunteer Program (RSVP)  
 Volunteers always welcome. . . . . (775) 726-3447  
 VFW, Caliente . . . . . (775) 726-3156

## Purple Onion

Antiques  
Vintage Items  
Collectibles



Open Memorial Day through Labor Day  
Watch for new shop next door at 685 Main Street

683 Main Street  
Pioche, NV 89043

775-962-5000

## Overland Hotel & Saloon

662 Main Street Pioche, NV 89043



Themed Rooms, A/C & Free Wi-Fi  
Slots - Video Poker - Dance Hall

*Back Bar over 150 years old*

"New Gift Shop"  
**775-962-5895**

www.overlandhotelnv.com  
overlandhotel@lcturbonet.com(email)